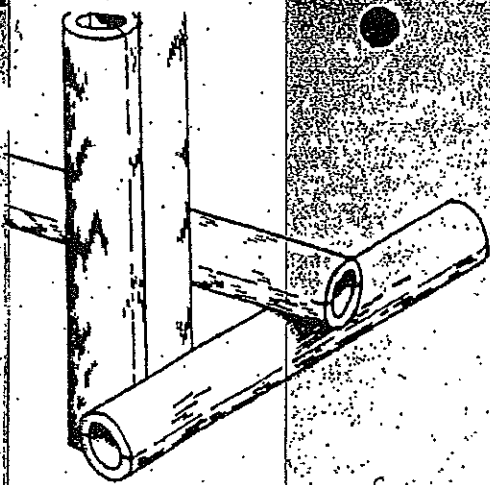


ARTHUR DEMS
MAY 10 - 2001

EXHIBIT
5-10-01

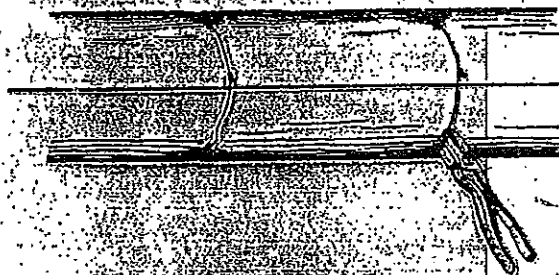
0001



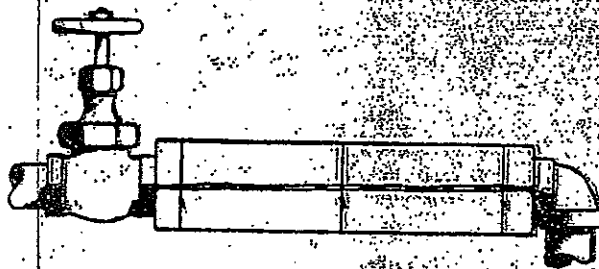
85% MAGNESIA MOLDER PIPE COVERING.



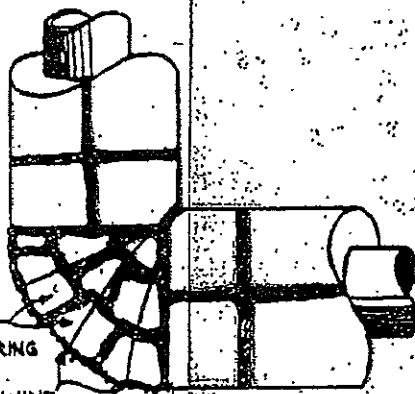
FITTING MOLDER PIPE COVERING.



FITTING MOLDER PIPE COVERING.



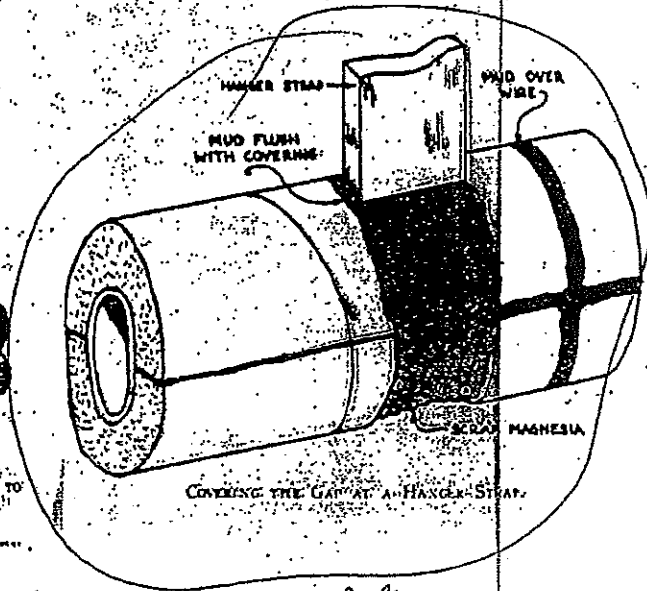
MOLDER PIPE COVERING ON STRAIGHT PIPE.



85% MAGNESIA MOLDER PIPE COVERING.

TWINE

OF COVERING HELD WITH TWINE BEFORE MOLDING OVER TO COVER ELL.



COVERING THE GIRTH AND HANGER STRAP.

HANGER STRAP

WELD OVER WIRE

MUD FLUSH WITH COVERING

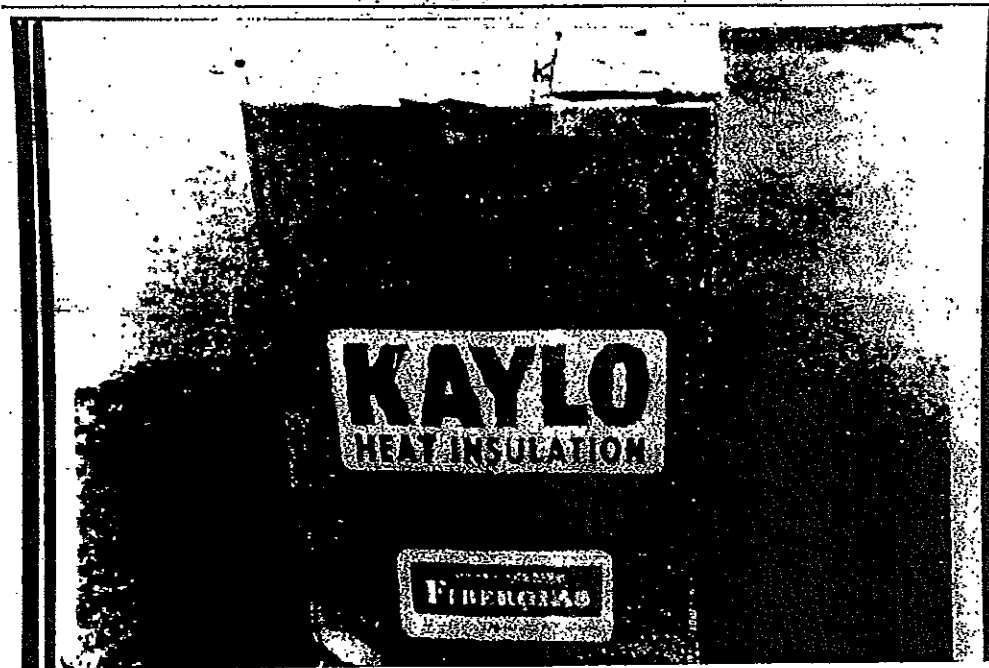
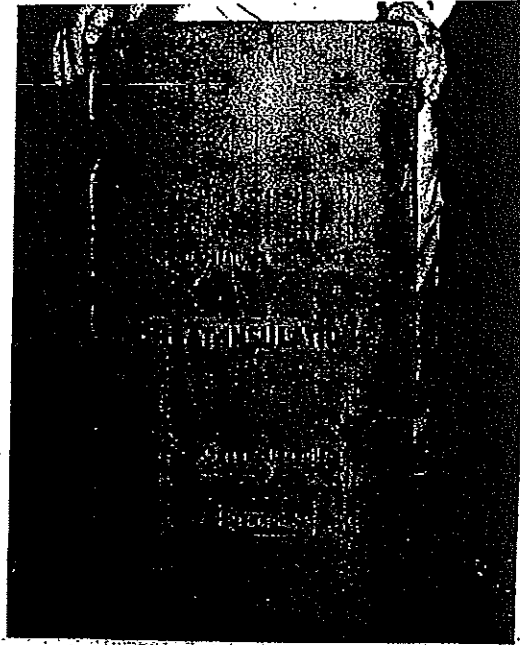
MAGNESIA

DEFENDANT'S
EXHIBIT
9/17/94 P
PMSA

1965 main product
of cover

0002

6-2



0003

6-3

KAYLO INSULATION

OWENS-CORNING
FIBERGLAS

0004

6-4



OWENS-CORNING
FIBERGLAS

Kaylo

PLAINTIFF'S
EXHIBIT
316
3/24/67

0005

A

6-5

PLAINTIFF'S
EXHIBIT

D-05
8/24/77

MAYLO
INSULATION

FOR
TEMPERATURES
TO 1200° F.

0006 ~

6-6

MADE WITH
FIBERGLASS



INSULATING CEMENT

Available in two strengths
making ideal cement for use in
temperatures up to 1800°F.

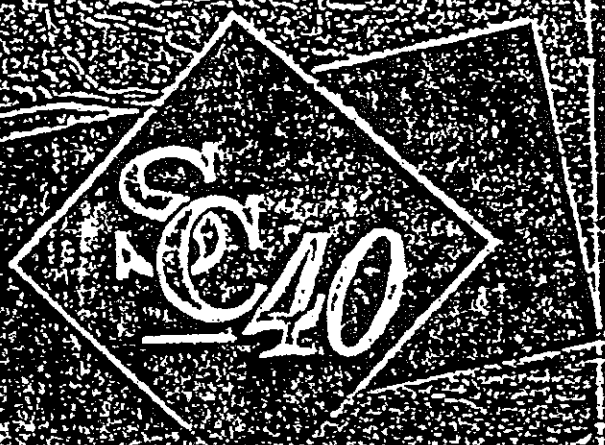
50 lbs. Net Weight

MADE IN U.S.A.

THE FICHER INDUSTRIES, INC.
CINCINNATI, OHIO

0007

OWENS-CORNING
FIBERGLAS



INSULATING
CEMENT

OWENS-CORNING
FIBERGLAS

0008

6-8 7

PRODUCT ID #4039

FABCO

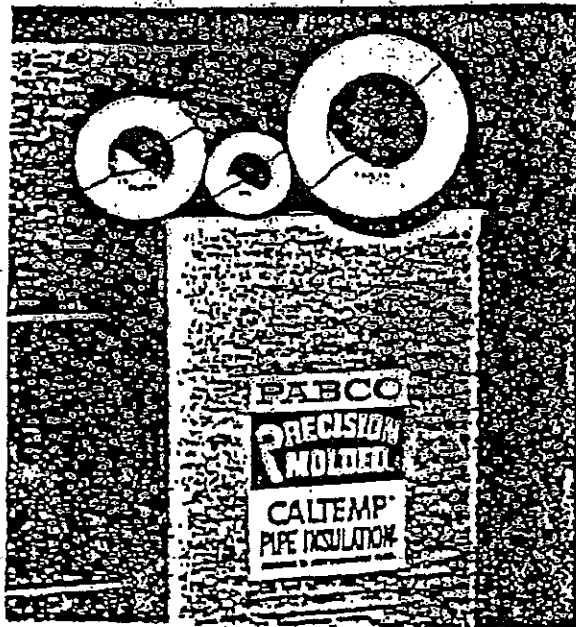
INTERNATIONAL

WIRE

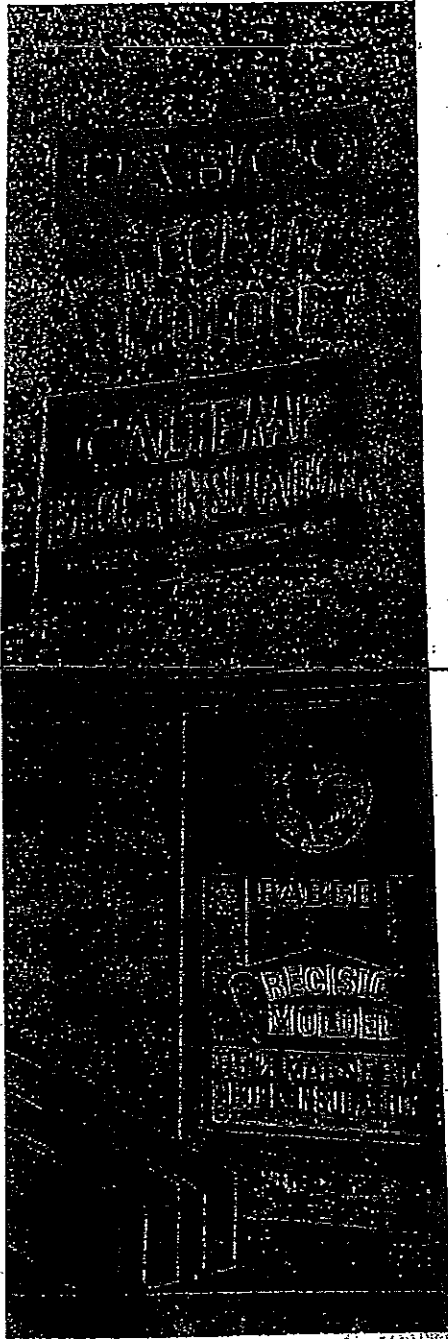
INC.

0009

6-9



0010



0011

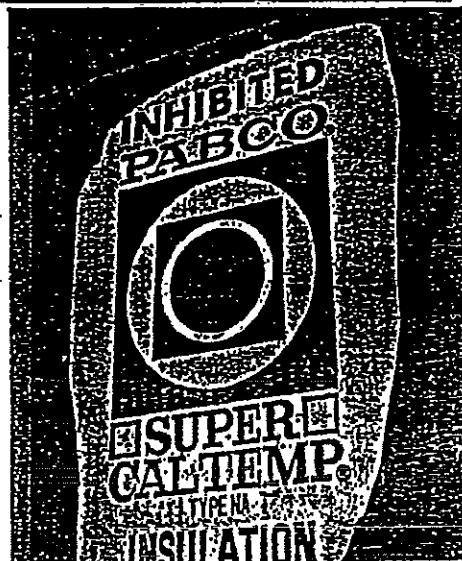
6-11



PABCO®

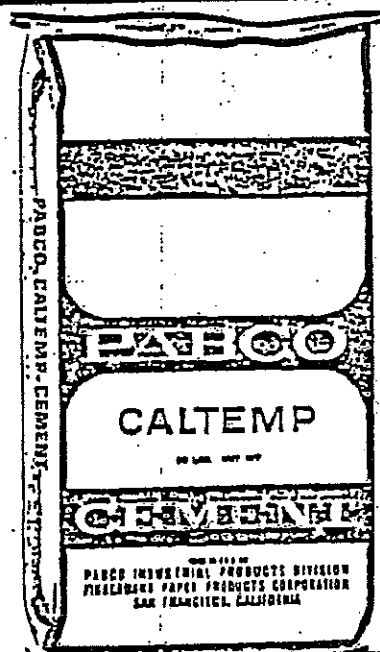
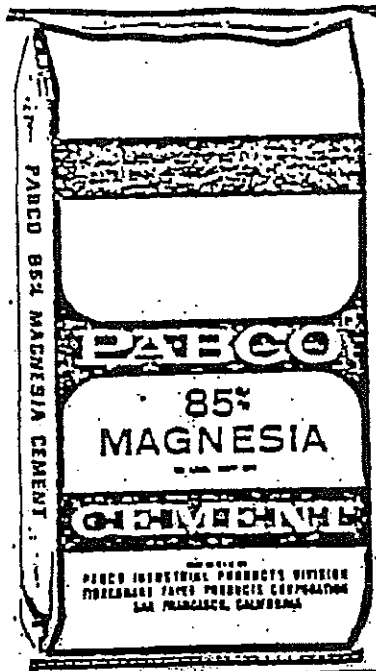
**SUPER
CALTEMP®
INSULATION**

**PRECISION MOLDED
CORROSION INHIBITED**



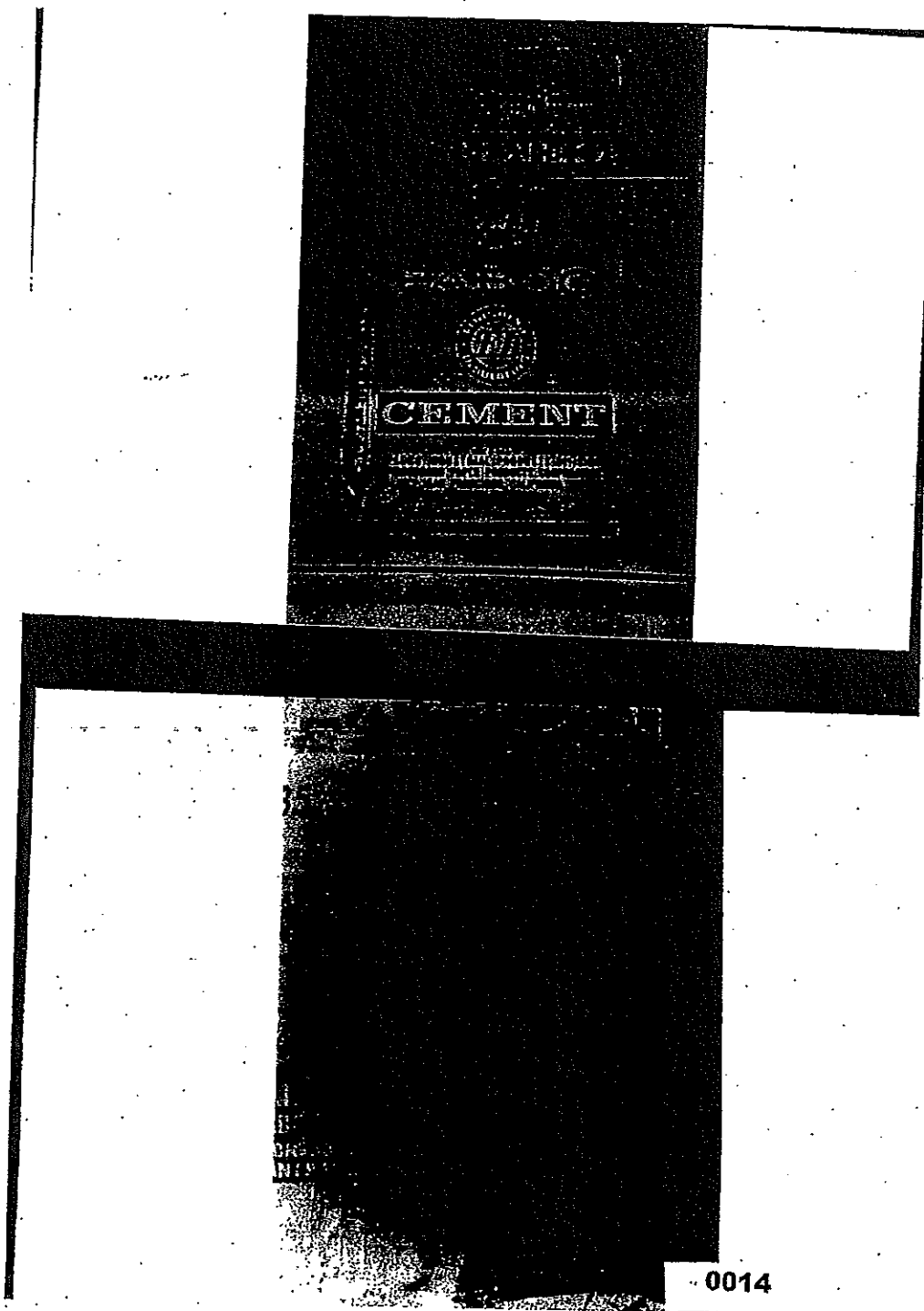
0012

6-12



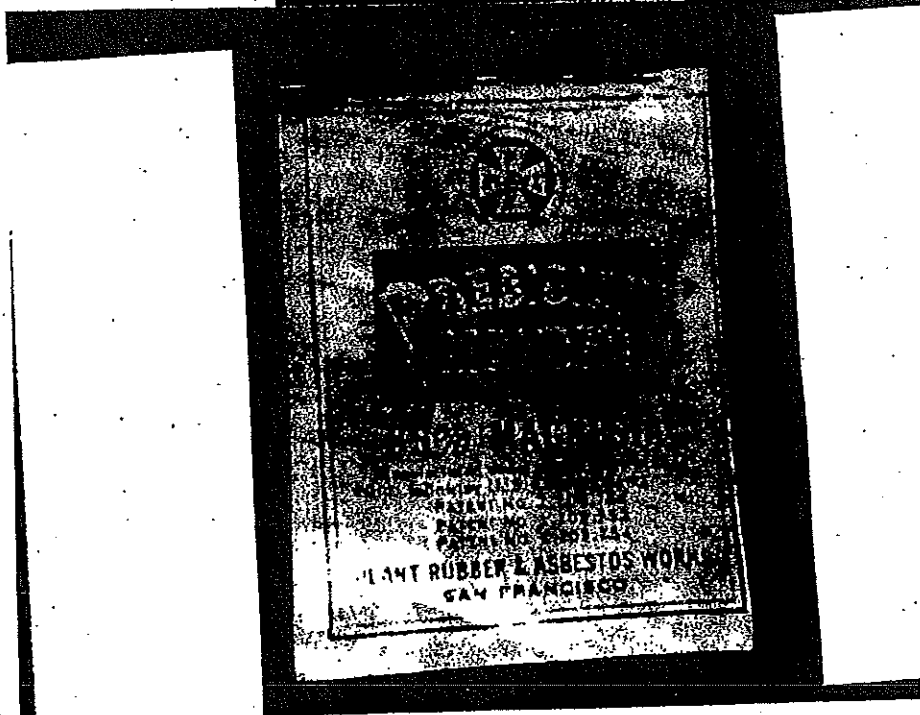
0013

6-13



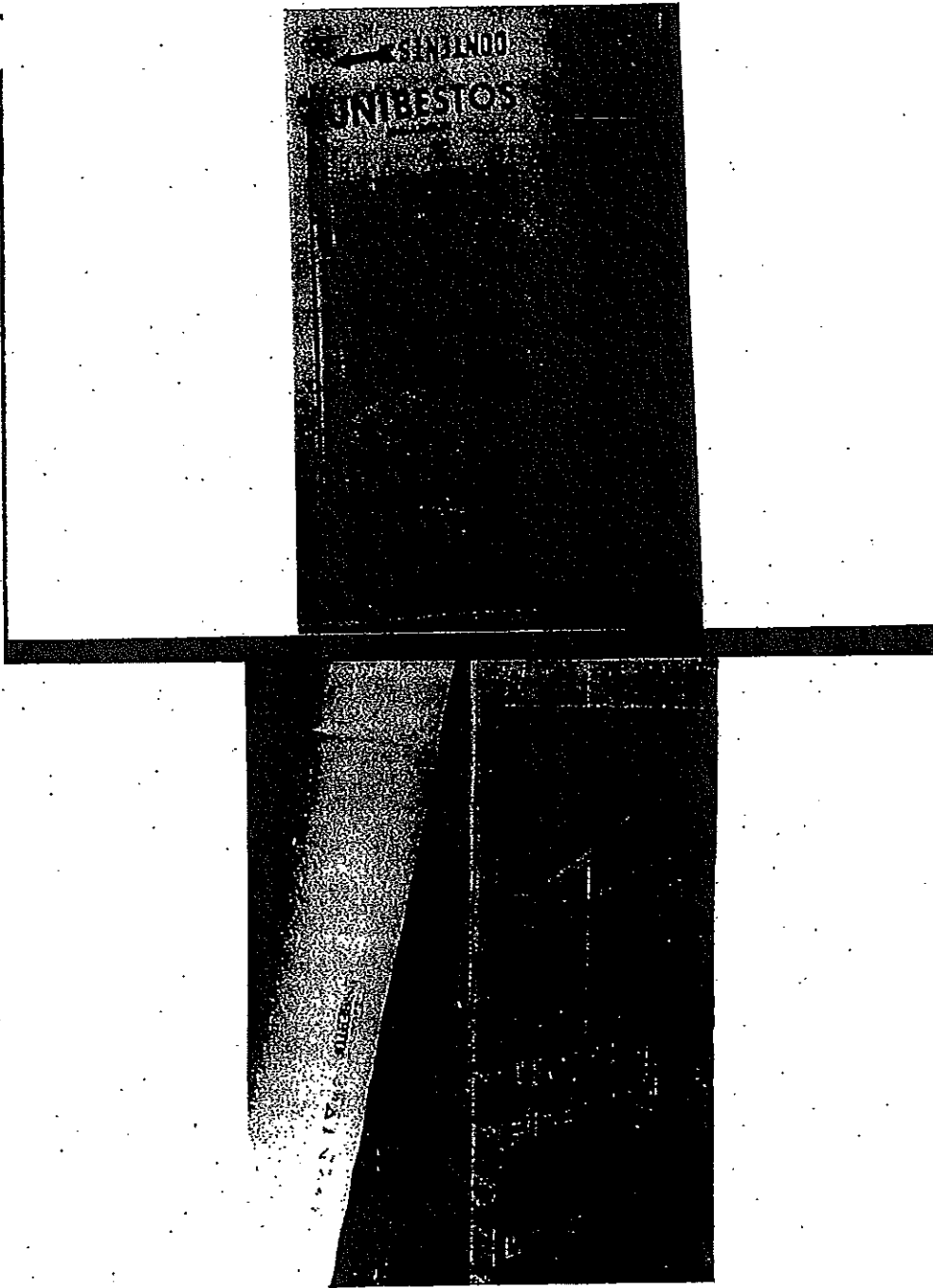
0014

6-14



0015

6-15



0016

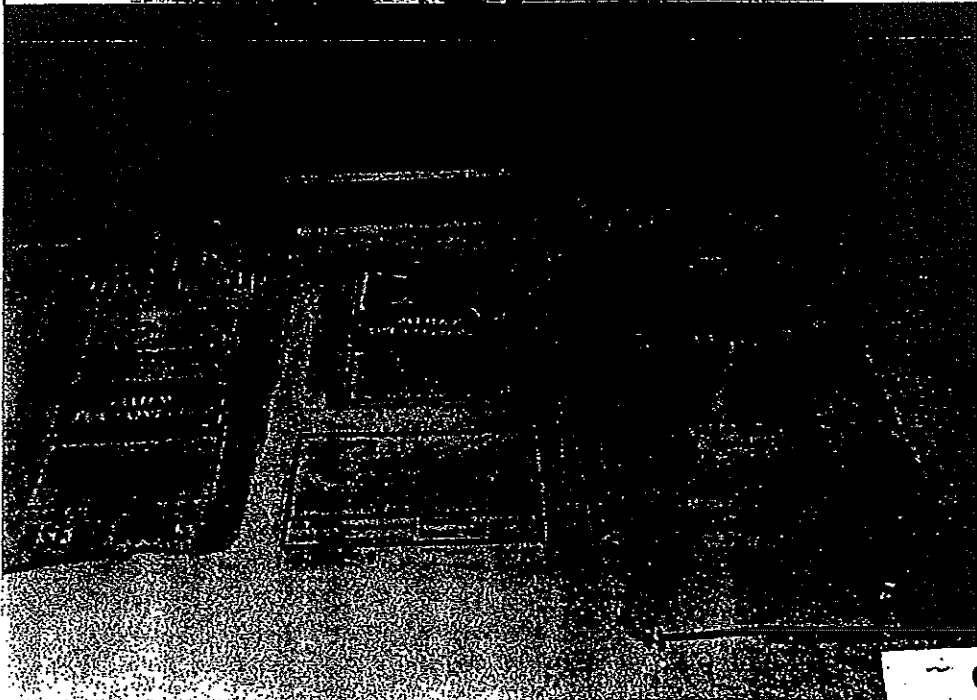
6-16



MUNDET
CUSTOM MOLDED
85% MAGNESIA
HEAT INSULATION

PIPE
COVERING
SECTIONS SIZE THICKNESS

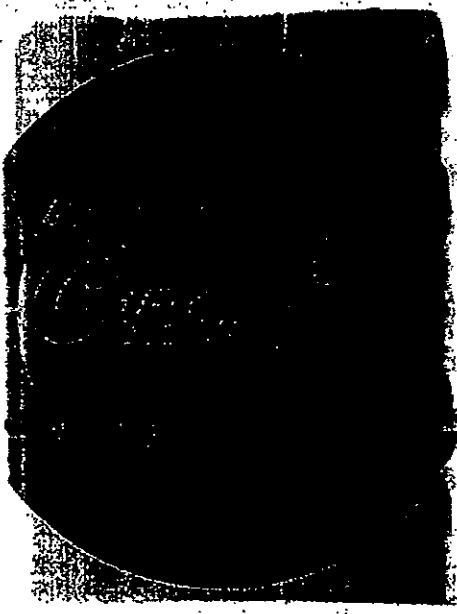
MUNDET CORP CORPORATION
NEW JERSEY



0017

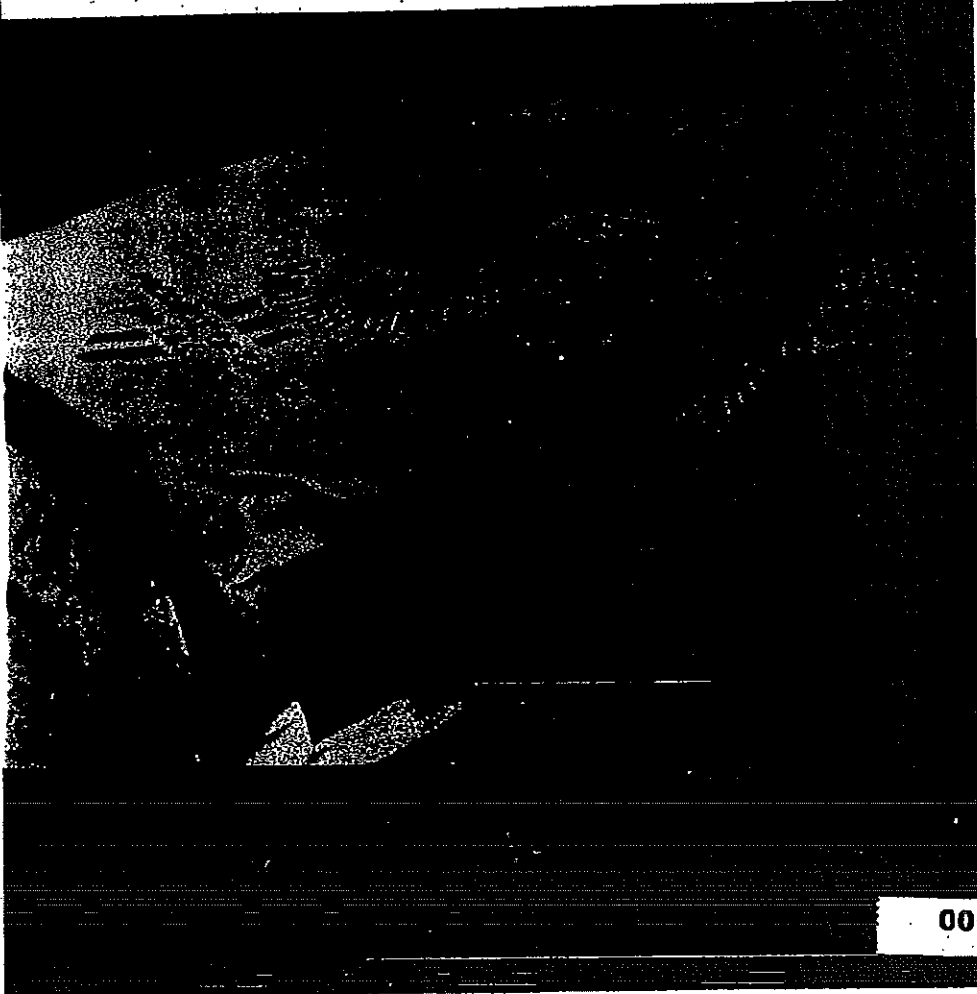
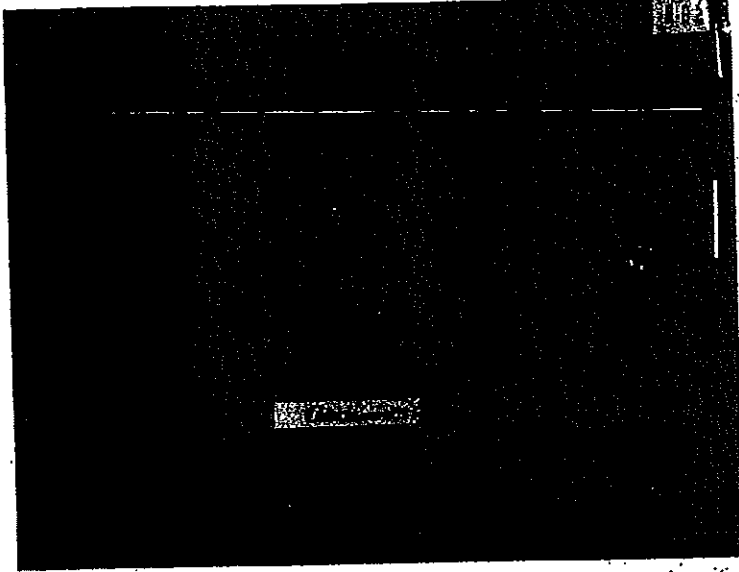
6-18

Super-light
85 WATTAGE
PIPE COVERING
SIZE
THICKNESS
ELECTRIC
LIGHT GENTLY HIGH EFFICIENCY



0018

b-19



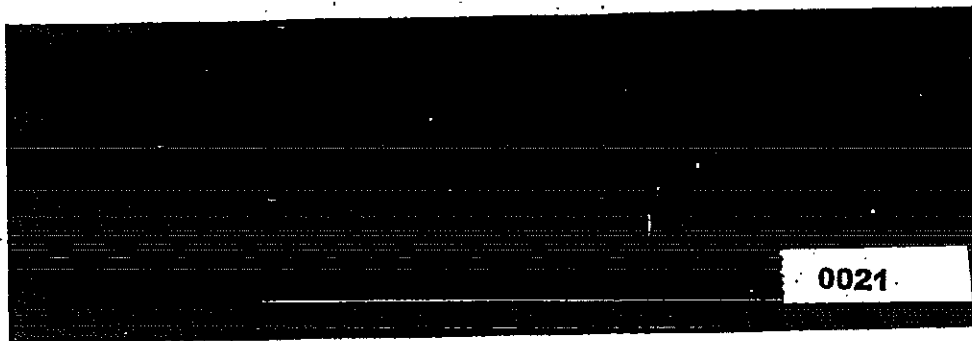
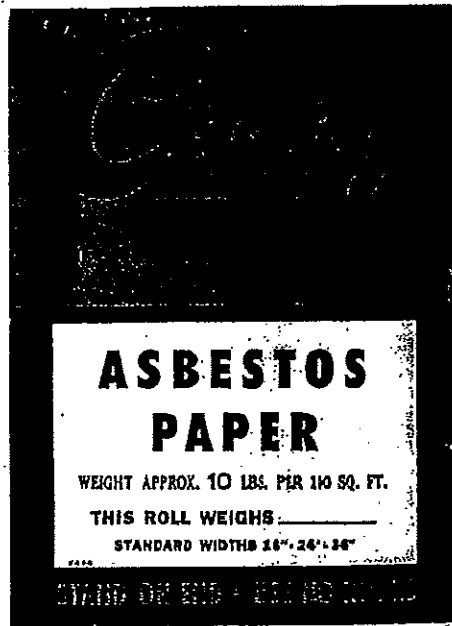
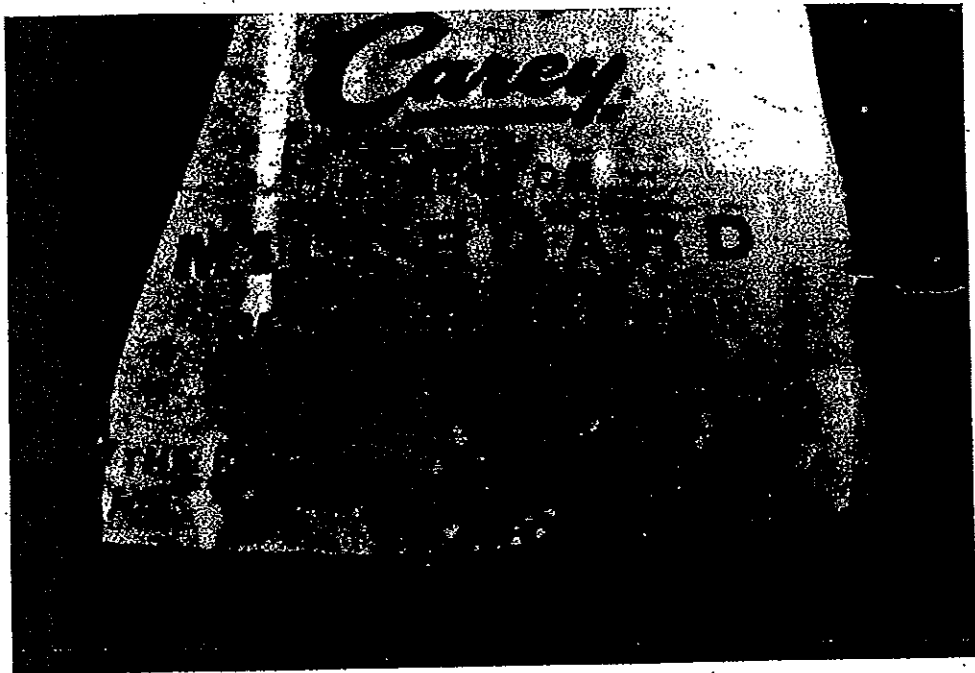
0019

6-20



6.21

0020



MADE IN U.S.A.

CONTAINS
3 SQUARES
 APPROX. 15 lb. (6.8 kg)

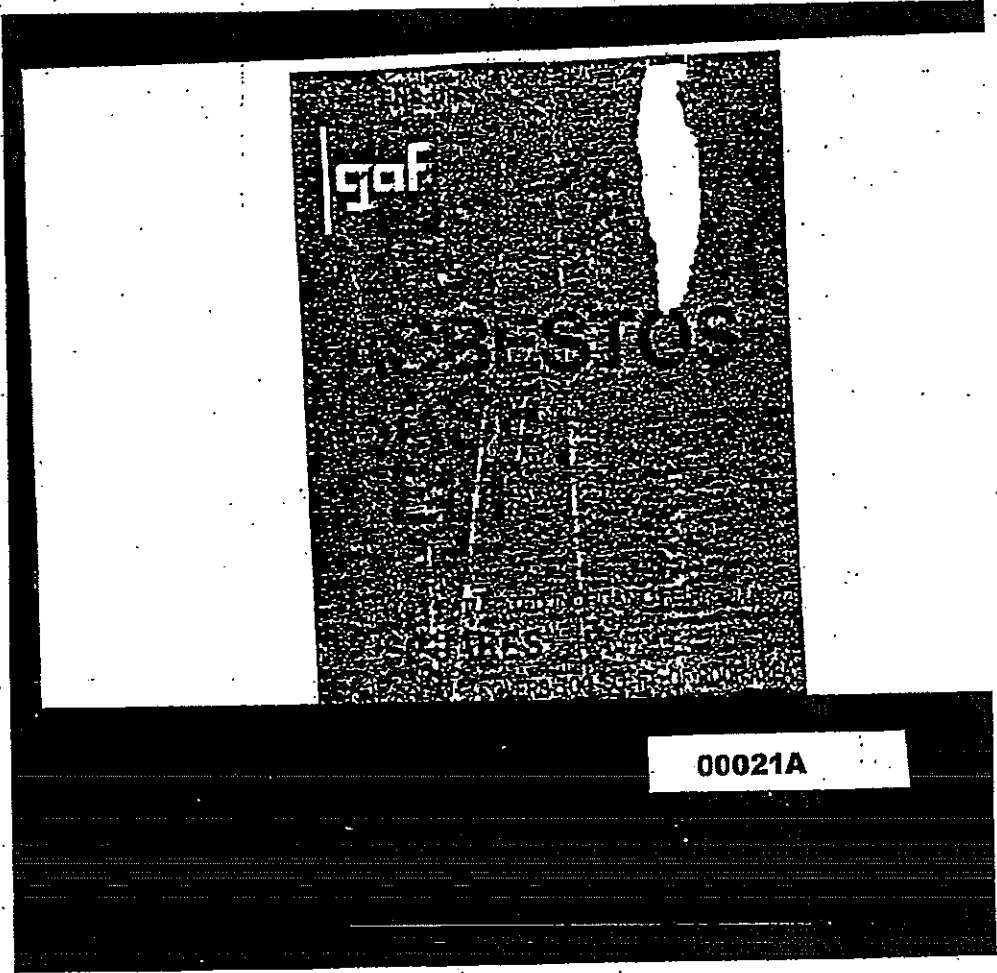
STAND
 ON
 END

USE
 NO
 HOOKS

IN WIND, WEATHER (BELOW 50° F.) STORE OVERHANG
 IN A WINDY PLACE BEYOND UNROLLING

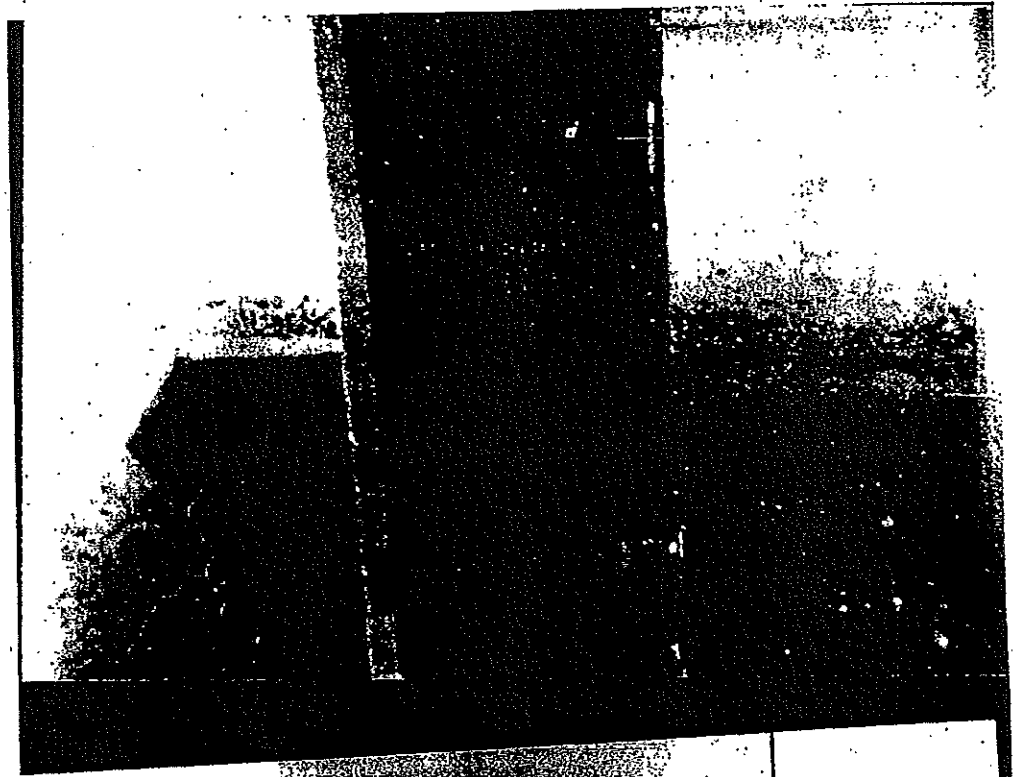
Carey

FIBEROCK
 ASPHALT IMPREGMATED
ASBESTOS FELT



00021A

6-23

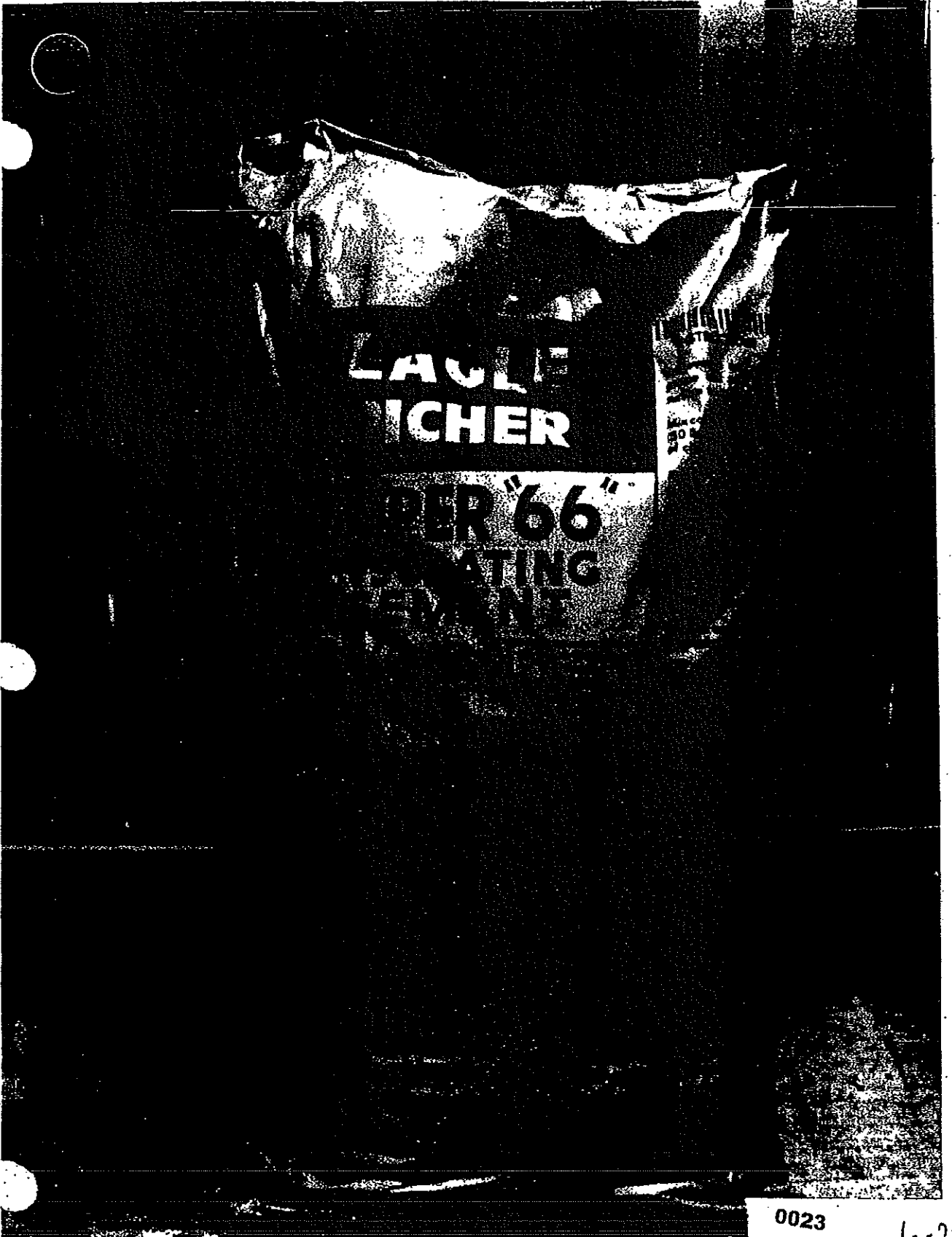


NEW

FOR
INDUSTRIES
UP TO 100' x 100'

0022

6-21



EAGLE
ICHER

PER 66
ATING

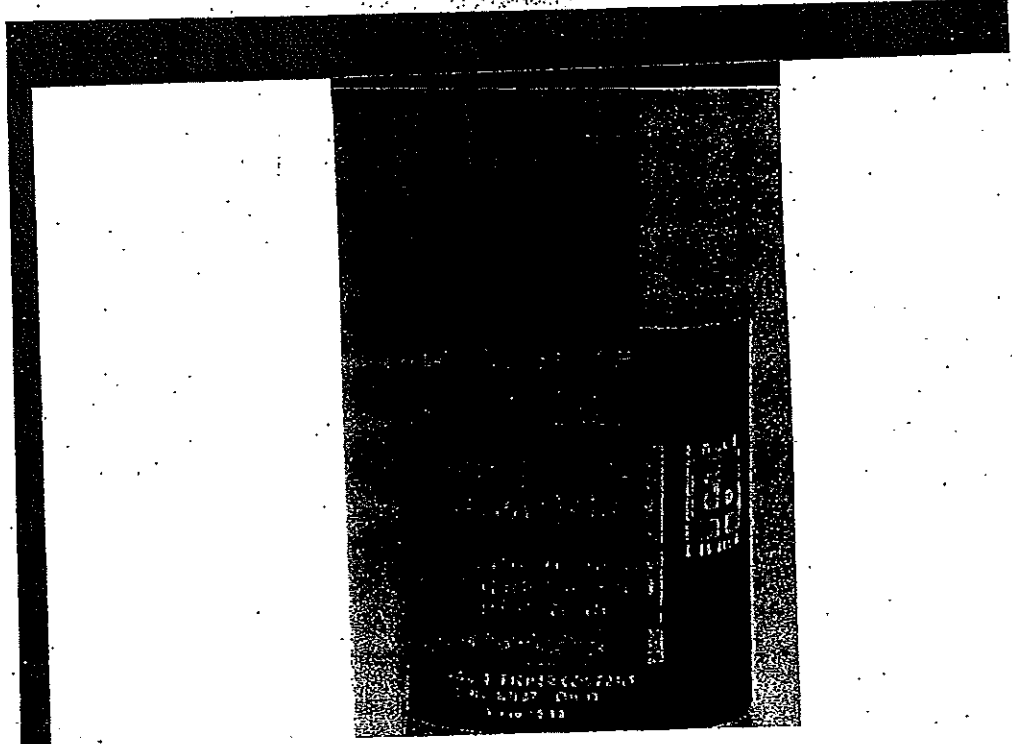
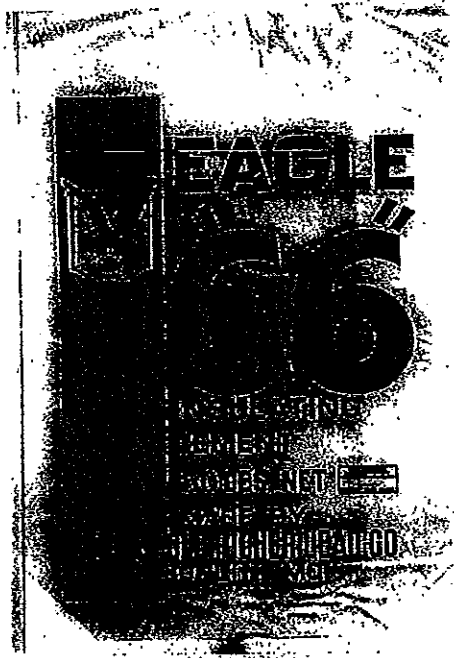
0023

6-25



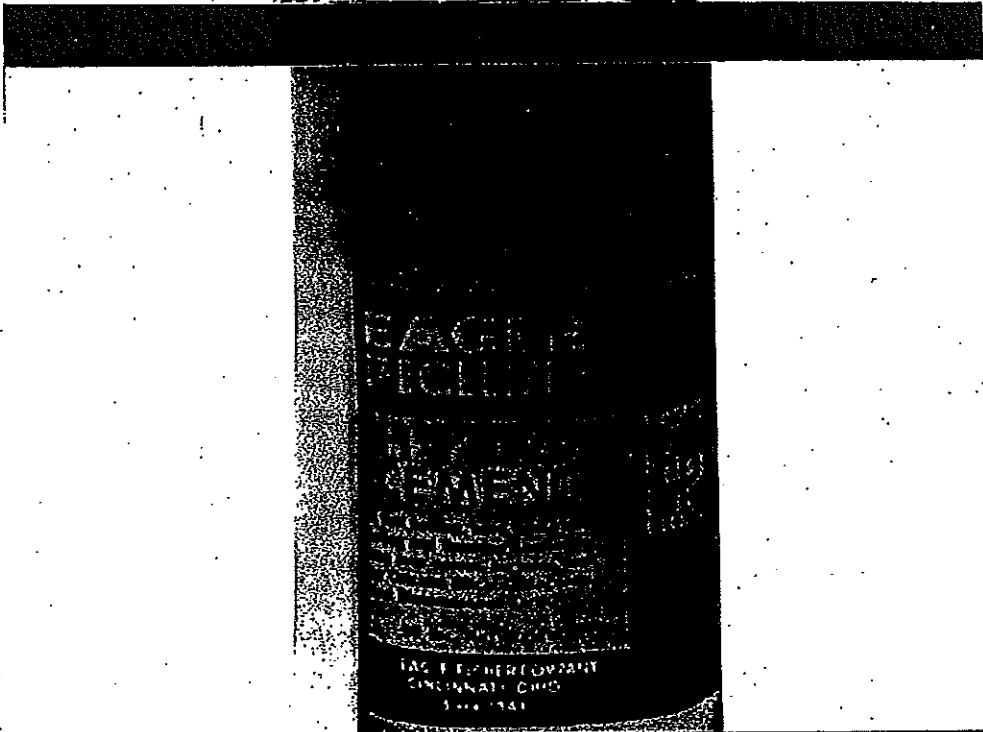
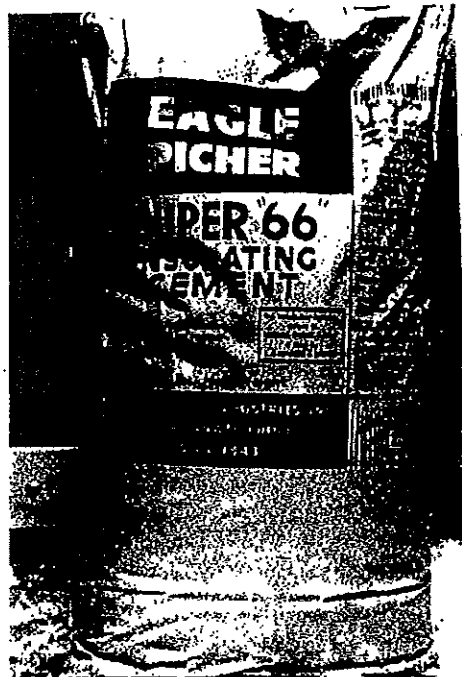
0024

6-26



0025

6-27



62e

0026

PRODUCT ID #4032

**EAGLE
PICKER**

**HYLO
CEMENT**

Fast setting, hard, white finish
Best finishing cement for
all porous surfaces such
as brick, Silicate, Magnesia,
Plaster, etc.

50 Lb. Net Weight

EAGLE-PICKER COMPANY
CINCINNATI, OHIO
Since 1843

**EAGLE
EP
PICKER**

EP-?

0027

6-29

EP-4

**EAGLE
PICKER**

**ONE-COTE
CEMENT**

An all-purpose, fast setting
finishing cement, that insulates
as well as protects

50 lbs. Net Weight

EAGLE PICKER COMPANY
CINCINNATI, OHIO
3-11-44

EAGLE
EP
PICKER

0028

6-30

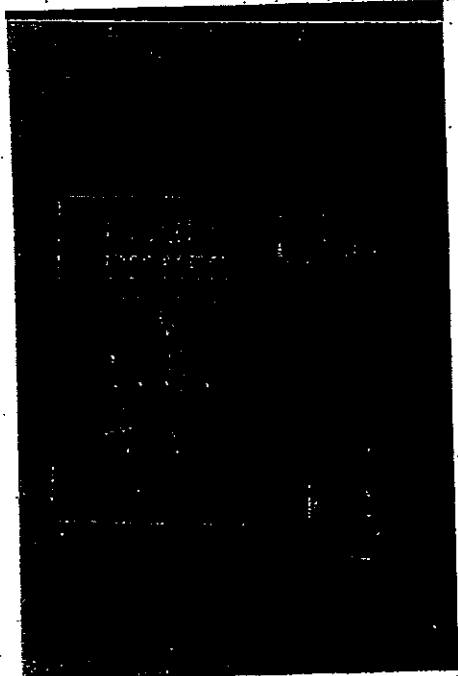
**EAGLE
PICHER**

**LOOSE
SUPERGLAS FIBER
INSULATION**

TYPE H-2-C
An exceptionally efficient
insulation for low and high
temperatures.

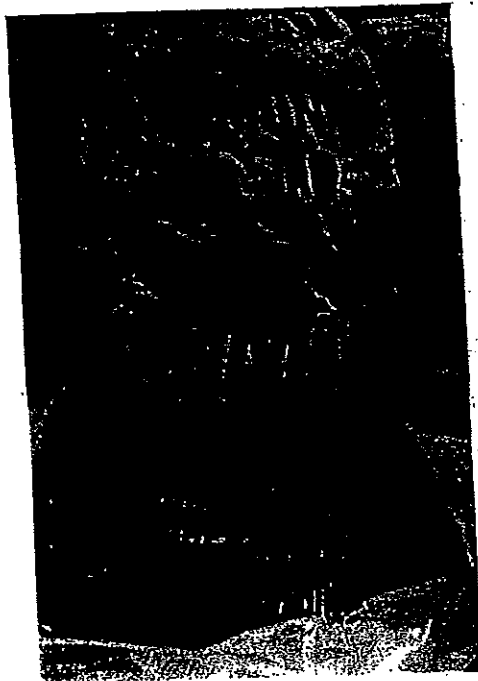
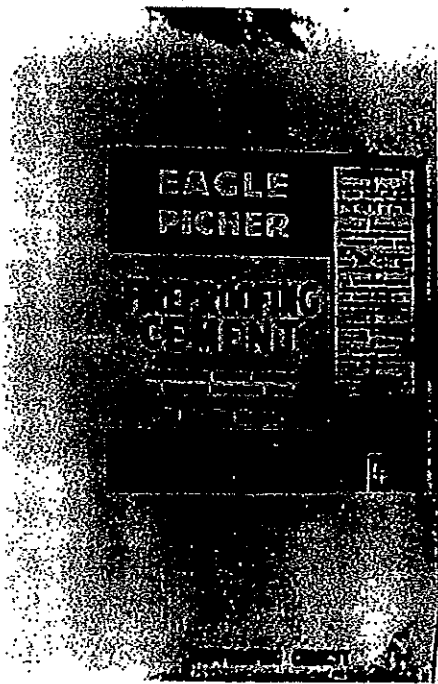
CONTENTS 3 1/2 CU. FT.

EAGLE-PICHER INDUSTRIES, INC.
CINCINNATI, OHIO
Since 1843



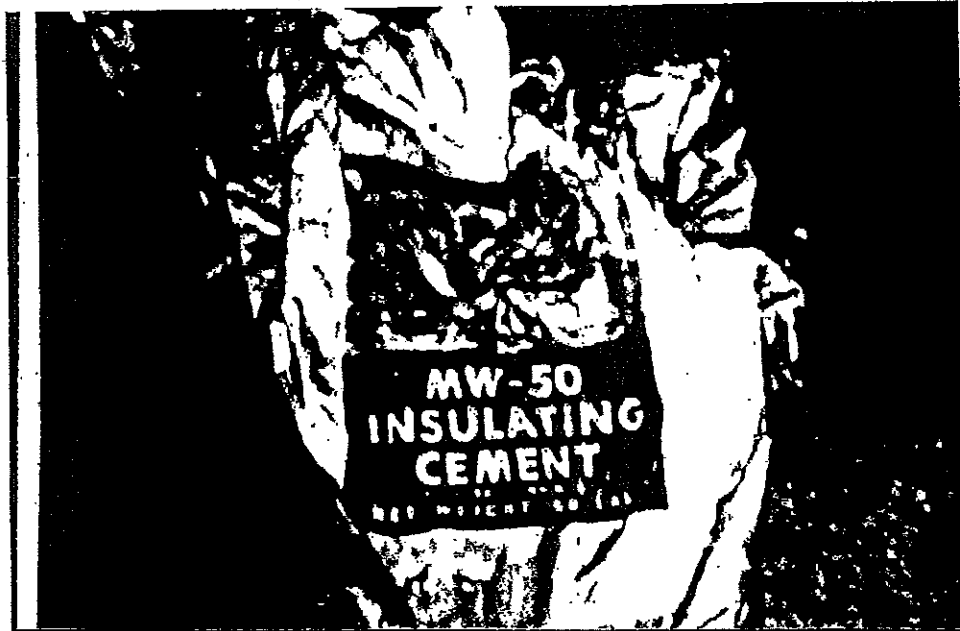
0029

6-31



0030

6-32



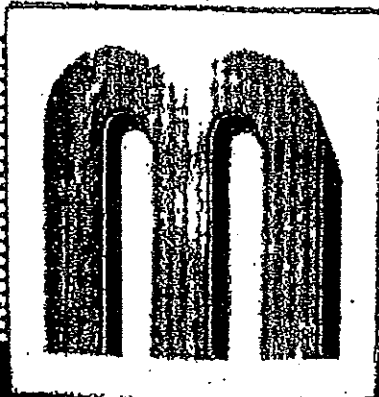
Asbestospray
ADHESIVE
TYPE

MIXING AND APPLICATION
INSTRUCTIONS CAN BE
OBTAINED FROM THE
ASBESTOSPRAY CORP.
CAUTION: KEEP FROM FREEZING
THIS ADHESIVE SHALL BE MIXED WITH WATER, ONE TO ONE,
IF BURE CONTAINERS AND EQUIPMENT ARE CLEAN.

ASBESTOSPRAY CORP.
NEWARK, NEW JERSEY

0031

6-33



MUNDET
CUSTOM MOLDED
85% MAGNESIA
HEAT INSULATION

PIPE
COVERING

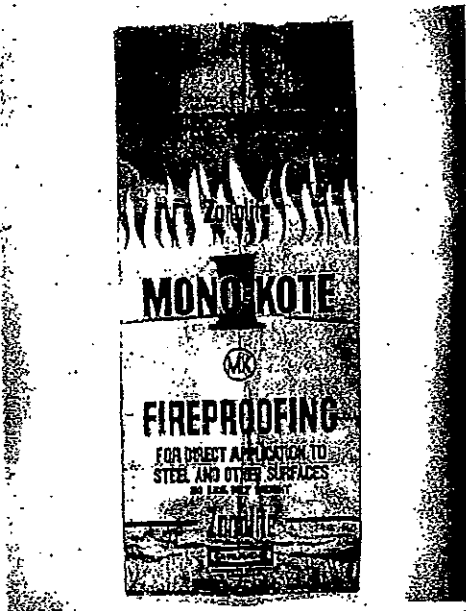
SECTIONS SIZE THICKNESS

5 4 1

MUNDET FORM CORPORATION
MORTON, ILLINOIS 62570

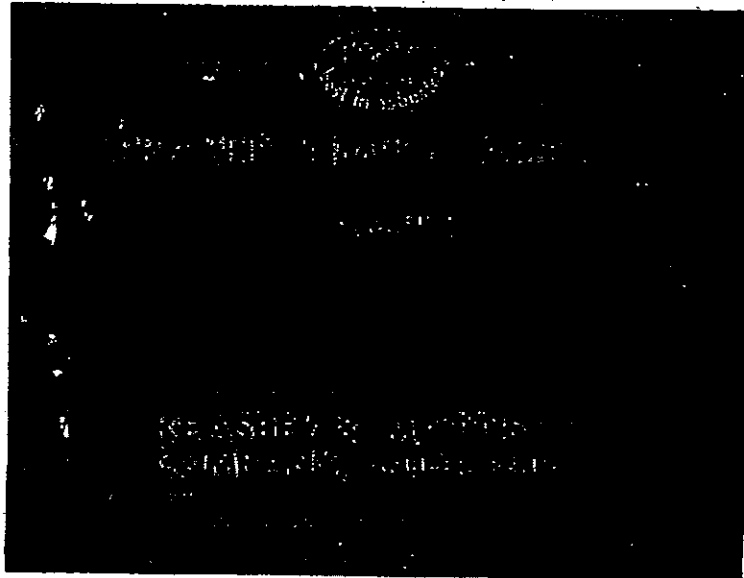
0031A

6-34



0032

6-35



SPRAYED

"LIMPET"

ASBESTOS

NO NAILING
NO CUTTING
NO FITTING
NO CLIPPING



IT'S SPRAYED!

the self-healing material is

ADDITIONAL CORROSION
INTERNAL INSULATION
CONDENSATION CONTROL
FIRE PROTECTION

MADE IN THE U.S.A.



AMBLER PENNA.

0033

6-36

EAGLE-PICHER

SUPERGLAS

**TYPE - 1500
BULK FIBER**

FORM 0 282

PRINTED IN U.S.A.

THE EAGLE-PICHER COMPANY
GENERAL OFFICES CINCINNATI 1, OHIO

LIMPET

ASBESTOS FIBRE

**LW25 FIREPROOFING
GRADE**

MADE IN
CANADA



FABRIQUE AU
CANADA

ATLAS ASBESTOS

COMPANY

Division of Bell Asbestos Mines, Ltd.

MONTREAL TORONTO EDMONTON VANCOUVER

NET 75 LBS.

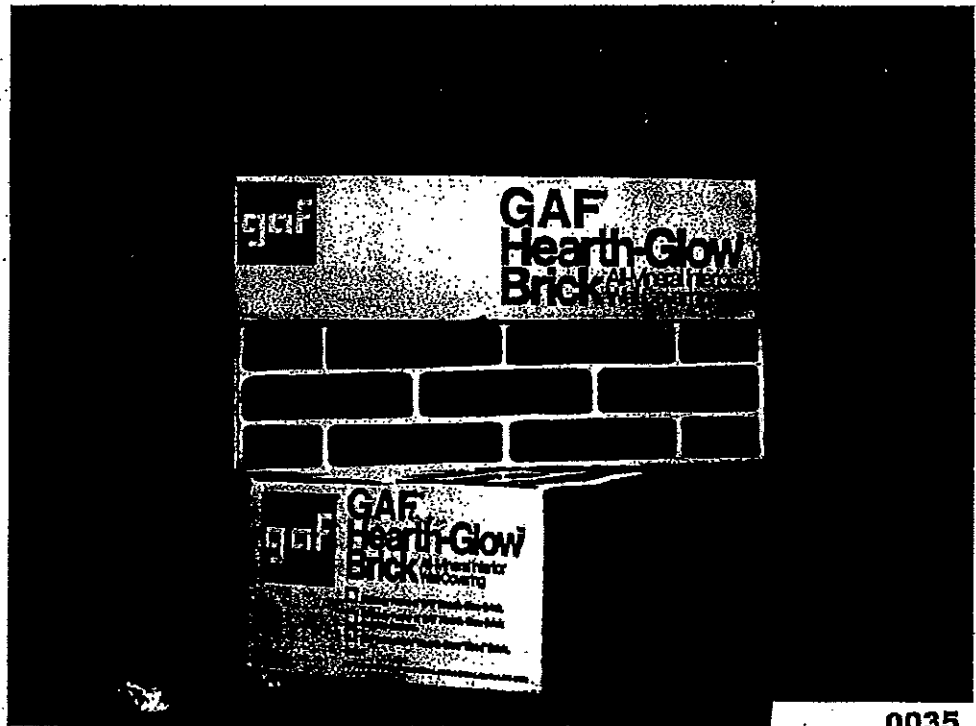


LW25



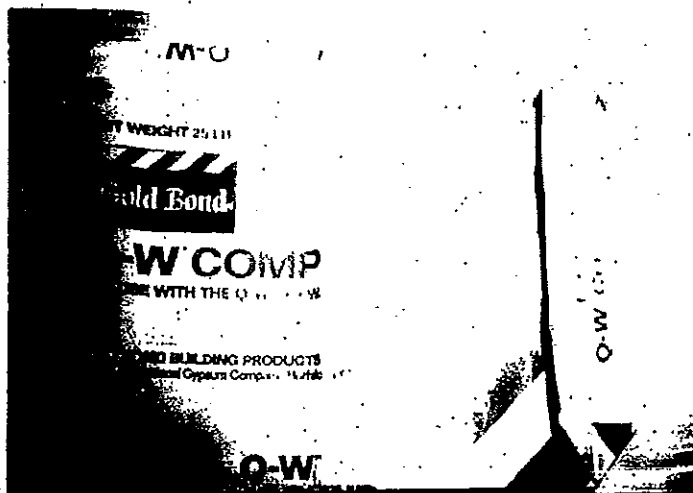
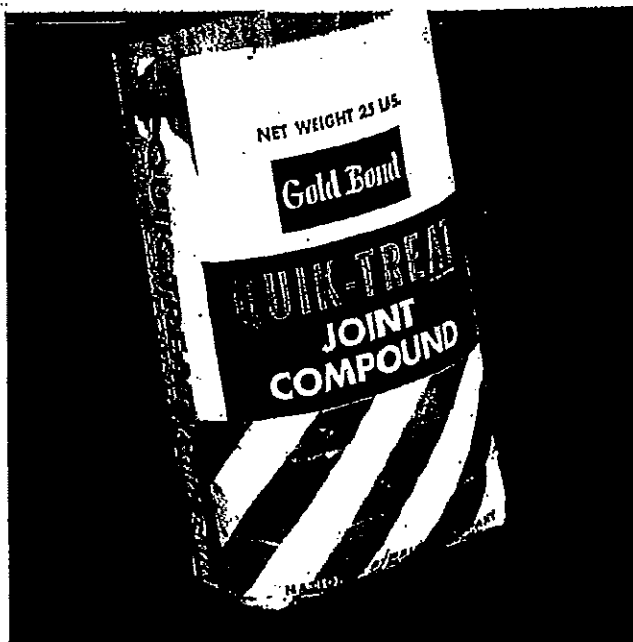
0034

6-37



0035

6-390



6-39



Gold Bond

Texture Paint

FOR PLASTIC WALL FINISHING

CONTENTS **25** POUNDS

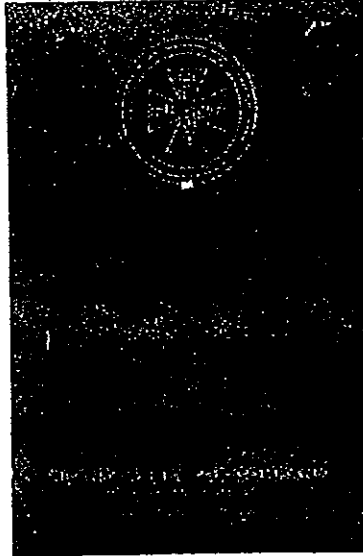
Manufactured by

NATIONAL GYPSUM COMPANY

BUFFALO, N. Y.

0037

6-40



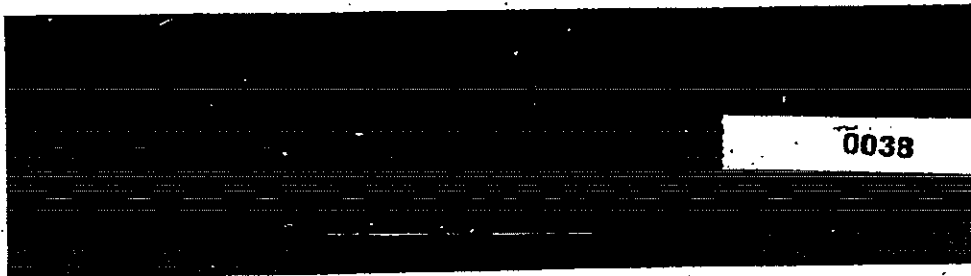
Master

UNITED STATES
BUILDING
EXPOSITION

PLANNING AND DESIGN

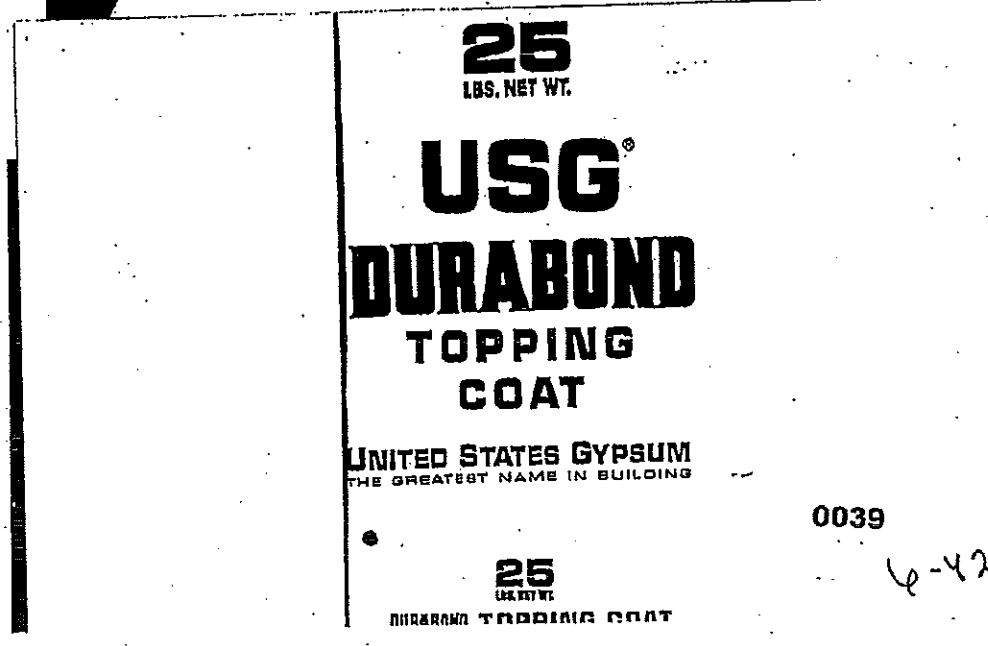
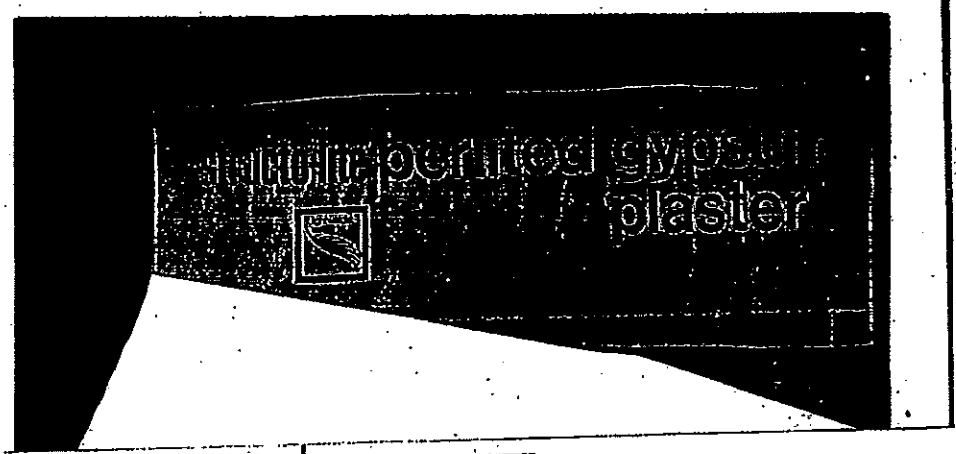
NATIONAL GYPSUM COMPANY
General Office - Boston, N.Y.

NEW YORK ATLANTA BOSTON BIRMINGHAM
CHICAGO CINCINNATI ST. LOUIS DALLAS
INDIANAPOLIS KANSAS CITY MINNEAPOLIS



0038

6-41



25 LBS.  NET WT.

DURABOND


JOINT COMPOUND

FOR ONE-DAY
JOINT FINISHING



1 GIN. A PART OF THE USG GROUP
UNITED STATES GYPSUM
THE GREATEST NAME IN BUILDING

CONTENTS **USG** 5 GALLONS



U.S. UNITED STATES GYPSUM COMPANY

STRUCTOLITE
HEAVY STRUCTURAL GYPSUM

UNITED STATES GYPSUM CO.

NEW YORK, CLEVELAND,
CHICAGO, MINNEAPOLIS,
KANSAS CITY, SAN FRANCISCO.

0040

6.43

DURABOND

JOINT COMPOUND

●

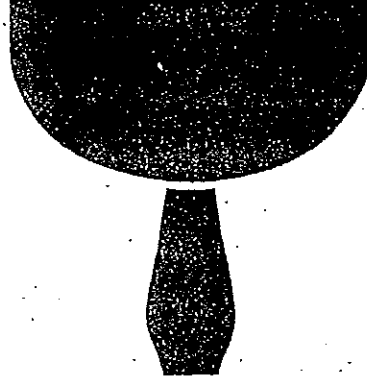
DURABOND

TOPPING COAT

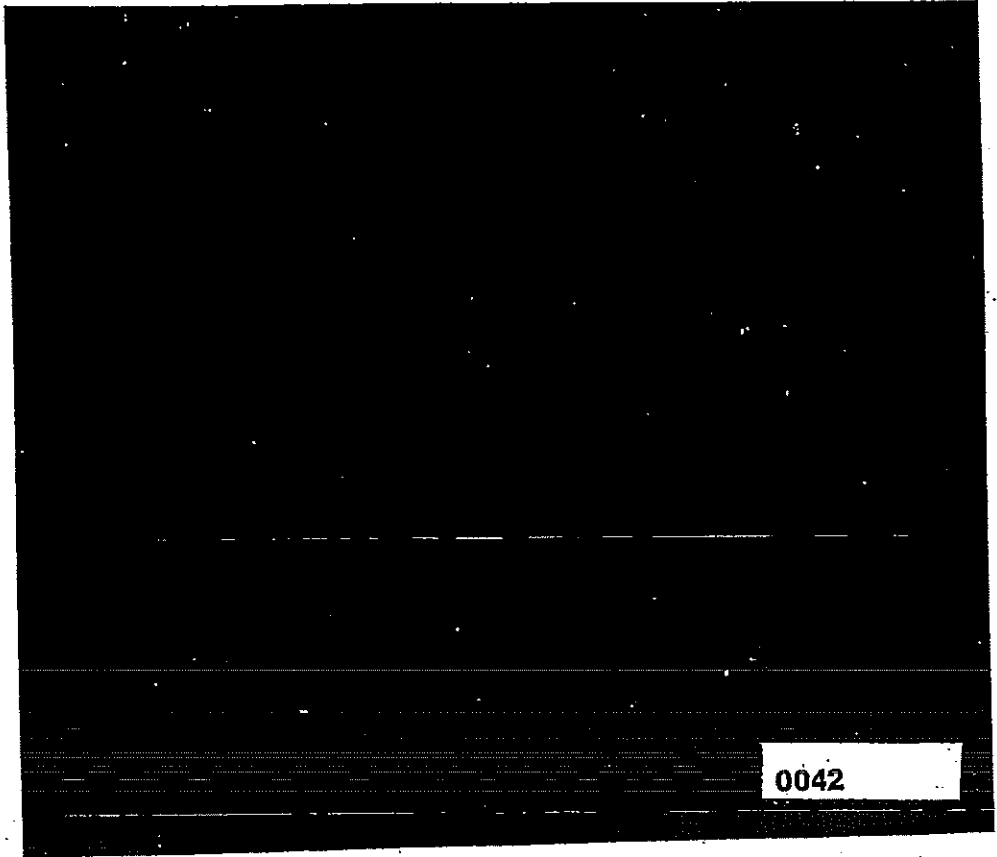


6-44

DURABOND*



**JOINT COMPOUND
TAPING**



0042

6-4

PLASTIC CEMENT

810-22

Plastic Asphalt—Solvent Type
For Roof Repairs and Flashings

COMBUSTIBLE MIXTURE
CONTAINS PETROLEUM
DISTILLATE HARMFUL OR
FATAL IF SWALLOWED

KEEP OUT OF THE
REACH OF CHILDREN

COMBUSTIBLE MIXTURE—HARMFUL OR FATAL IF SWALLOWED

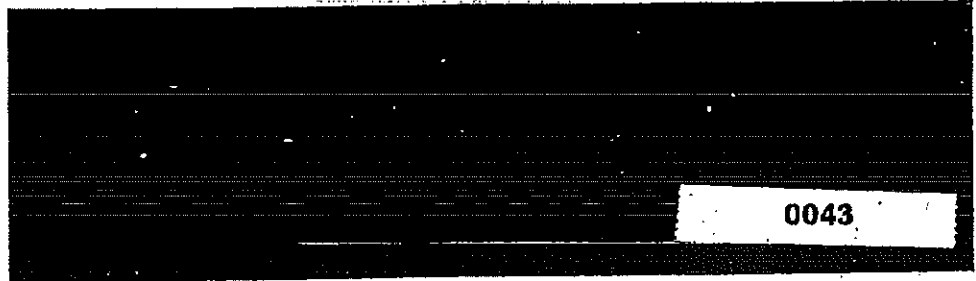
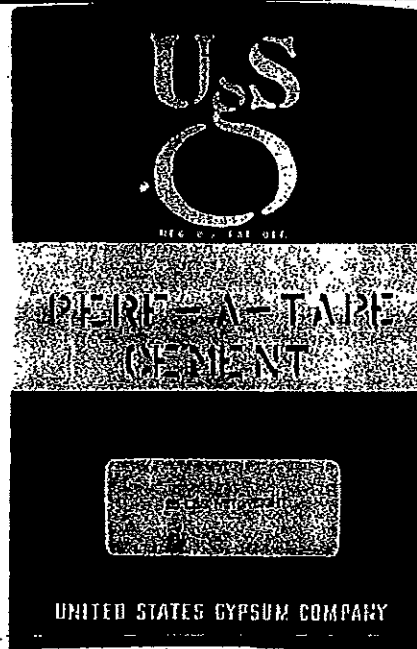
LIMITED WARRANTY

Flintkote is warranted to be free from defects in material and workmanship under normal conditions of use and service for a period of one year from the date of application. This warranty is void if the product is used in a manner not recommended by the manufacturer or if it is subjected to abnormal conditions of use or service. The manufacturer is not responsible for damage to property or injury to persons resulting from the use of this product.



FIVE GALLONS
(18.9 LITERS)

FLINTKOTE



6-46

25

POUNDS WEIGHT

PERF-A-TAPE

JOINT COMPOUND

TAPING

UNITED STATES GYPSUM

JOINT TAPE

EPOXY COMPOUND TAPING

Use a standard taping procedure for embedding
a smooth, weathered, tapered, metal corner
beads on dryed walls over gypsum wallboard.

DIRECTIONS FOR USE

Use drinkable water and clean mixing equipment. Mix
powder directly into water until it is completely
wet. Mixers must soak for at least 15 minutes - longer
in cold water. Re-mix until smooth. Apply to
dry surfaces only.

WATER PROPORTIONS PER 25 # BAG

Hand Tool Application
Mechanical Taping
Mechanical Fill Coat

BASIC CAUTIONS

• DO NOT use in areas where
ACIDIC conditions exist
• DO NOT use in areas where
TEMPERATURES ARE BELOW 40°F AND COOL
WETTING AGENTS ARE USED
• KEEPLY DRY

WARRANTY

Since this is a product of epoxy
resin, it is not covered by the
warranty of the manufacturer.
The merchant is responsible for
the accuracy of the information
on this label. THE USER ASSUMES
ALL LIABILITY FOR THE USE OF THIS
PRODUCT.

UNITED STATES GYPSUM
CHICAGO, ILLINOIS

88-303-G-6-65

dry surfaces only.

WATER PROPORTIONS PER 25 # BAG

Hand Tool Application
Mechanical Taping
Mechanical Fill Coat

Approx. 16 1/2 pts
Approx. 19 1/2 pts
Approx. 18 pts

BASIC CAUTIONS

- EXCESSIVE WATER CAUSES ABNORMAL SHRINKAGE, EDGE CRACKING, POOR BOND AND OTHER PROBLEMS
- DO NOT INTERMIX WITH OTHER JOINT COMPOUNDS
- IN NET OR DRY FORM.
- MINIMUM AIR, WATER, MIX AND SURFACE TEMPERATURES OF 51° F. MUST BE MAINTAINED WITHIN WORKING AREAS UNTIL JOINTS ARE COMPLETELY DRY.

For extra information, consult U. S. G. literature or your local U. S. G. representative.

WARRANTY

Since methods and conditions of application and use are beyond the control of the United States Gypsum Company, its warranties of fitness and MERCHANTABILITY as well as any other warranties express or implied, made in connection with the sale of this product SHALL NOT BE ENFORCEABLE OR ACTIONABLE UNLESS THE PRODUCT IS USED ACCORDING TO UNITED STATES GYPSUM COMPANY DIRECTIONS OF APPLICATION.

UNITED STATES GYPSUM

CHICAGO, ILLINOIS 60604

HTA, U.S.G. 8/66

PERF-A-TAPE

JOINT COMPOUND TAPING

(OLD DESIGNATION: PERF-A-TAPE JOINT COMPOUND)

A phosphoric acid based formulation for embedding
PERF-A-TAPE reinforcement, fasteners, metal corner
beads and drywall trims over gypsum wallboard.

DIRECTIONS FOR USE

Use drinkable water and clean mixing equipment. Mix
powder thoroughly into water until powder is completely
wet. Mixture must soak for at least 5 minutes — longer
in cold water. Re-mix until smooth. Apply over thoroughly
dry surfaces only.

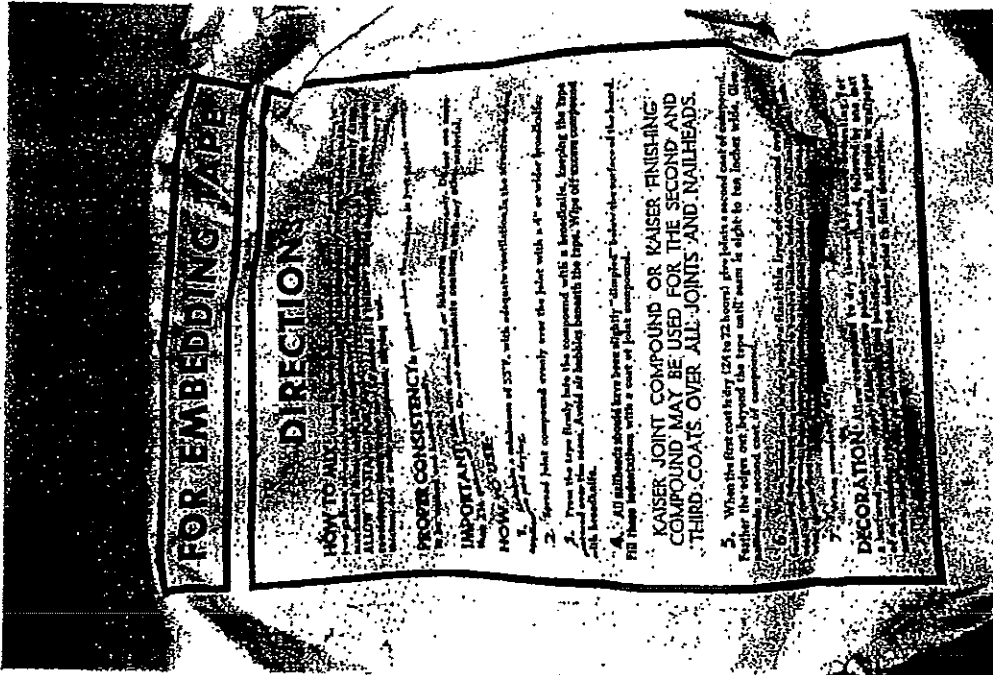
WATER PROPORTIONS
PER 25 # BAG

Hand Tool Application

Apply
Apply

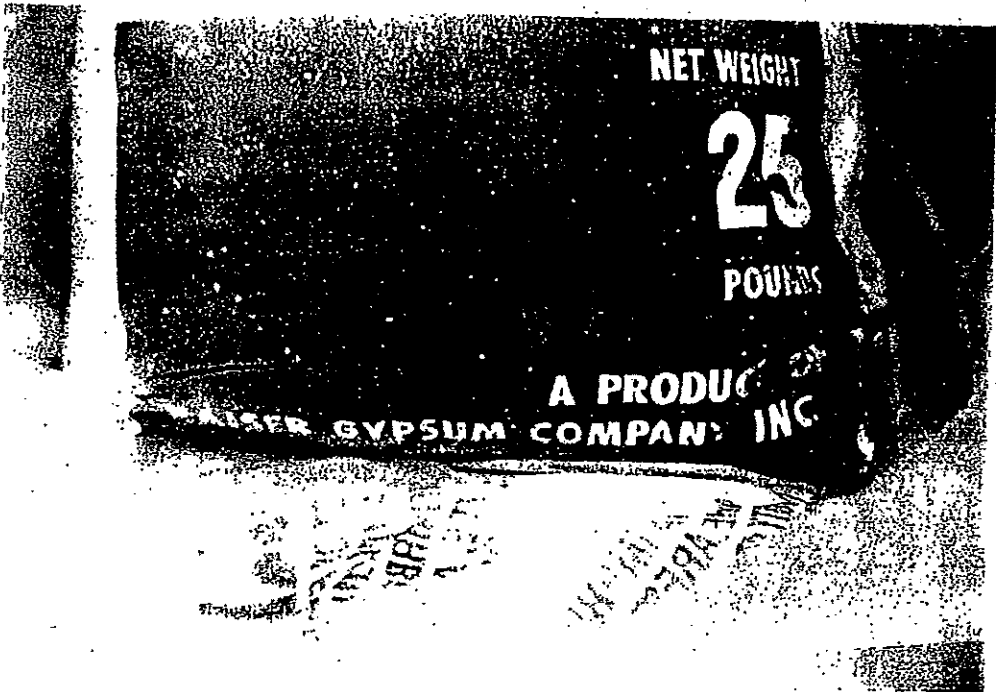
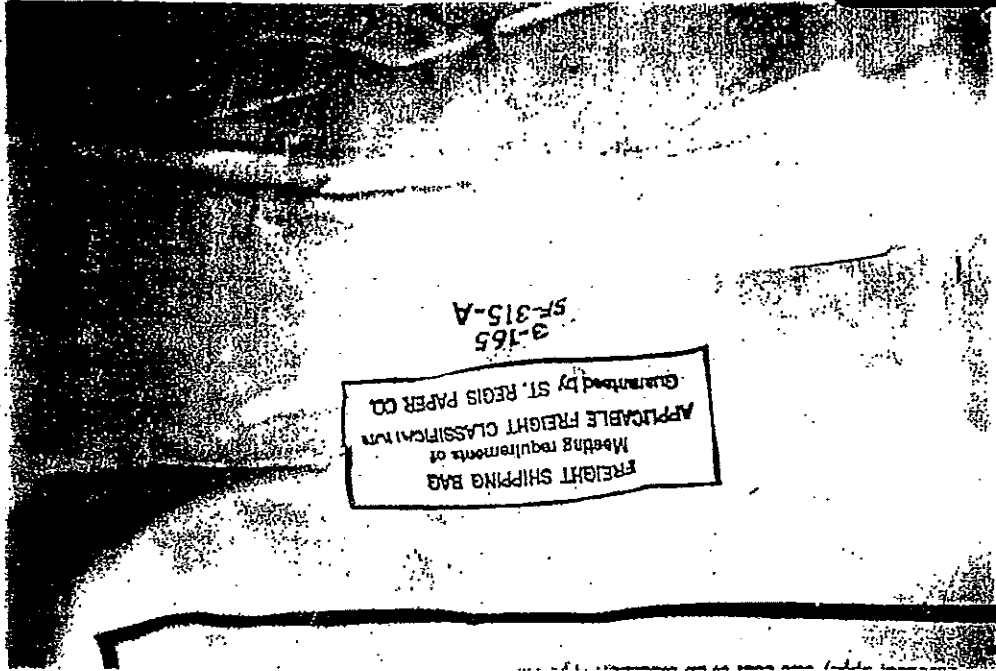
PLAINTIFF'S
EXHIBIT

9
#959478



0043E

PLAINTIFF'S
EXHIBIT
10 EMD
#959478



0043F

632



**RED TOP
IMPERIAL*
GYPSUM
FINISH PLASTER**

UNITED STATES GYPSUM COMPANY

* REG. U. S. PAT. OFF.

0044

6.53

PERF-A-TAPE JOINT SYSTEM

CONTENTS: 18 lbs. COMPOUND
250' roll of PERF-A-TAPE

Imperial
TAPE

12 • 300 LIN. FT. PER ROLL

P 225 N/64

UNITED STATES GYPSUM
CHICAGO - ILLINOIS

0045

6-54



USE NO SAND

IMPERIAL GYPSUM WOOD FIBRE PLASTER

UNITED STATES GYPSUM CO
CHICAGO



0046

6-55

KAISER GYPSUM, WALLBOARD AND ACCESSORIES

DESCRIPTION

Kaiser Gypsum Wallboard is made of noncombustible gypsum panels which are surfaced with a special high-quality manila paper. A wide choice of sizes, types and finishes is offered for use in a broad range of architectural and structural applications.

FUNCTION AND UTILITY. Because gypsum will not burn, gypsum wallboard resists fire, and these wallboard products are rated non-combustible by building and fire insurance authorities throughout the country. Kaiser Gypsum Wallboard has a 0 to 15 flame-spread rating.

ENGINEERED JOINT CONCEALMENT. Permanent concealment of joints is a benefit of the product's excellent dimensional stability. The long edges of most types of Kaiser Gypsum Wallboard are tapered to receive reinforcing tape and joint-filling compounds for complete concealment and smooth surfaces.

CRACK-RESISTANT LONG LIFE. Humidity and temperature have little effect on gypsum wallboard and on joint concealment systems. Unless subjected to unusual structural movement, Kaiser Gypsum Wallboard's excellent surface integrity normally lasts the lifetime of the building.

DECORATION. The high-quality manila face-paper is especially designed to receive decoration—flat or gloss paint, texture paint, wallpaper or fabric. The early decorating possible with gypsum wallboard reduces overall construction time.

WALLBOARD PRODUCT DESCRIPTIONS

PLAIN CORE. Kaiser Gypsum Wallboard is generally used for interior walls and ceilings. Joints between adjacent boards may be reinforced and concealed with Kaiser Joint Compound System.

TYPE X. Kaiser Gypsum Null-A-Fire Type X Wallboard combines the advantages of Plain Core Gypsum Wallboard with improved resistance to fire. The "Type X" core provides greater fire resistance than Plain Core Gypsum Wallboard of the same thickness.

ACOUSTIBAK. Faced on both sides with strong gray paper, Kaiser Acoustibak is used as backing for acoustical tile. This product is furnished in Plain as well as Type X cores. Combined with acoustical products, Acoustibak affords excellent sound attenuation. Where one-hour fire-resistance is required, ½-inch Type X Acoustibak is used. The V-joints do not require tape or filling.

FOILBACK INSULATING. Kaiser Gypsum Insulating Wallboard is made by laminating a sheet of aluminum foil to the back surface. Kaiser Foilback is also an efficient vapor barrier. Vapor permeability is 0.061 to 0.277 perms (compared with 1.00 perms—the maximum allowed by FHA).

MOISTURE-GUARD GYPSUM WALLBOARD

Description—Moisture-Guard is gypsum wallboard made with a special (U.S. Patent 2,604,411) core formulation and special papers for improved water resistance. It is designed for use in "wet" areas, such as shower stalls, around tub enclosures, in kitchens, on exposed exterior soffits, etc.

Moisture-Guard is designed to serve as a base to receive ceramic (or other) tile applied with proper adhesives.

Moisture-Guard is ½" or ¾" thick, 48" wide x 8' or 12' long, with tapered edges, tan face paper and black back paper.

Physical Properties—Water Absorption: 10% maximum (by weight). (24-hour immersion, 1" head at 70°F.)

Tile Shear Strength: Dry or wet (per "Water Absorption" above) the shear strength of tile bonded to Moisture-Guard with approved tile adhesives (CS 181-62 Hallmark) exceeds minimum 40 psi requirement. Core: ½" Regular or ¾" Null-A-Fire (Type X) gypsum core.

Type X Moisture-Guard may be substituted for Type X Gypsum wallboard in fire rated partitions.

Limitations—Should not be used where continuously or repeatedly immersed in water.



GYPSUM WALLBOARD ACCESSORIES

Kaiser gypsum manufactures a complete range of gypsum wallboard accessories for joint treatment, finishing and texturing of walls and ceilings. These include: Joint Compounds—Finishing Compounds • Dual Purpose Pre-mix • Patented—Silt-edge Joint Tape • K-Spray (aggregate ceiling texture) • Cover-tex (wall and ceiling texture) • Laminating Compound.

VINYL WALLBOARD. A standard high quality Kaiser Gypsum Wallboard to which a specially selected decorative vinyl wall covering has been applied over the face of the wallboard and wrapped around the edges. The resulting vinyl finish is tough and durable.

Standard Colors and Patterns—18 are available. See Kaiser Gypsum Movable Partition Systems catalog.

Stipple Finish—Cameo White, Champagne, Tapestry Beige, Chill Blue, Azure, Green Haze, Bay Leaf, Yellow Essence, Antique Gold, Bittersweet.

WALLBOARD DESIGN DATA

Type	Thickness	Standard Widths	Lengths
PLAIN CORE	½" - ¾"	2, 4'	½" - 8' ¾" - 6' to 14' ¾" - ½" - 6' to 12'
TYPE "X"	½" - ¾" Super "X" - ½"	2, 4'	½" - 6' to 11' ¾" - 6' to 12'
ACOUSTIBAK	Plain Core ¾" - ½" Type "X" - ½"	½" - 2, 4' ¾" - ½" - 2'	6' to 12'
FOILBACK (Insulating)	Plain Core ¾" - ½" Type "X" - ½"	4'	8', 10', 12'
COREBOARD	1"	2, 4'	6' to 12' 6' to 12'
VINYL Covered	Plain Core ¾" - ½" - ¾" Type "X" - ½" - ¾"	4' [⊙]	8' [⊙]
SHEATHING	Plain Core ½" Impregnated Core ½"	2, 4'	8'
MOISTURE GUARD	½" - ¾" Type "X" - ½"	4'	8', 12'

⊙ 2' Width available on special order.
⊙ 7', 9', 10', 12' lengths available as on special order.
⊙ Kaiser Wallboard is manufactured in compliance with Federal and ASTM Specifications.

WALL REPAIR CENTER **KAISER GYPSUM**

Products for patching, repairing and finishing interior walls and ceilings

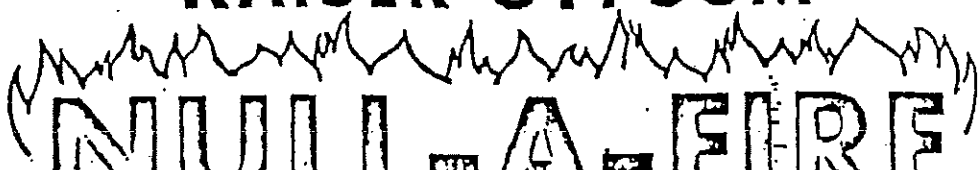


0048

The new Profit Producer from Kaiser Gypsum

6-57

KAISER GYPSUM



NULL-A-FIRE

5/8" GYPSUM WALLBOARD

ONE HOUR FIRE RESISTANCE

- NON-LOAD BEARING PARTITIONS
- LOAD BEARING PARTITIONS
- CEILING CONSTRUCTION

0049

A PRODUCT OF  **KAISER GYPSUM**
 **COMPANY, INC.**
 **LOS ANGELES • OAKLAND • SEATTLE**

NO. 23L

6-58



HARRY BEAN

a leading California plastering contractor
uses Permanente Plastic Cement.

Why? Ask and he'll tell you.

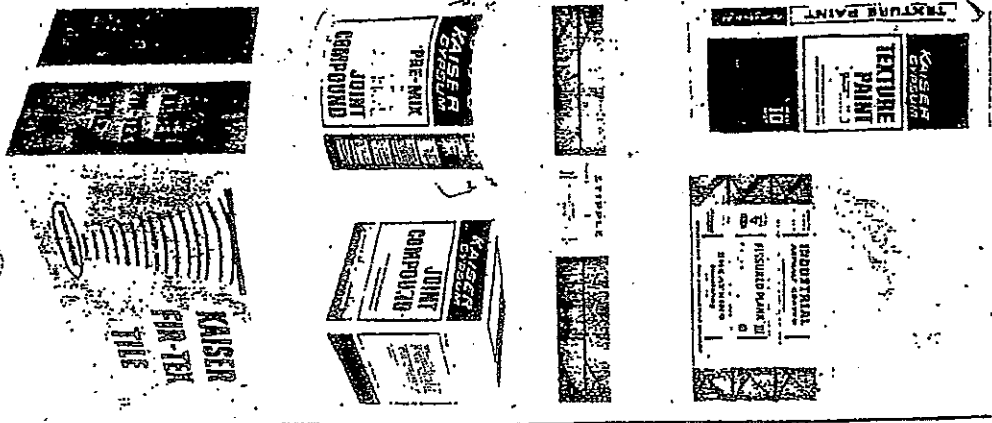
KAISER CEMENT

Ad No. KP-530

½ Page, 1 Color — California Plasterer & Plastering Industries
1966

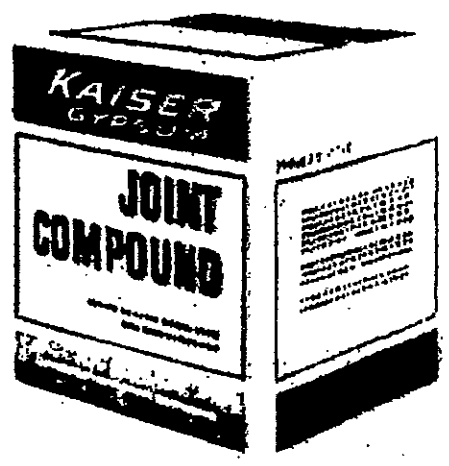
0050

6-59



0050A

6-60



0050B

6-61

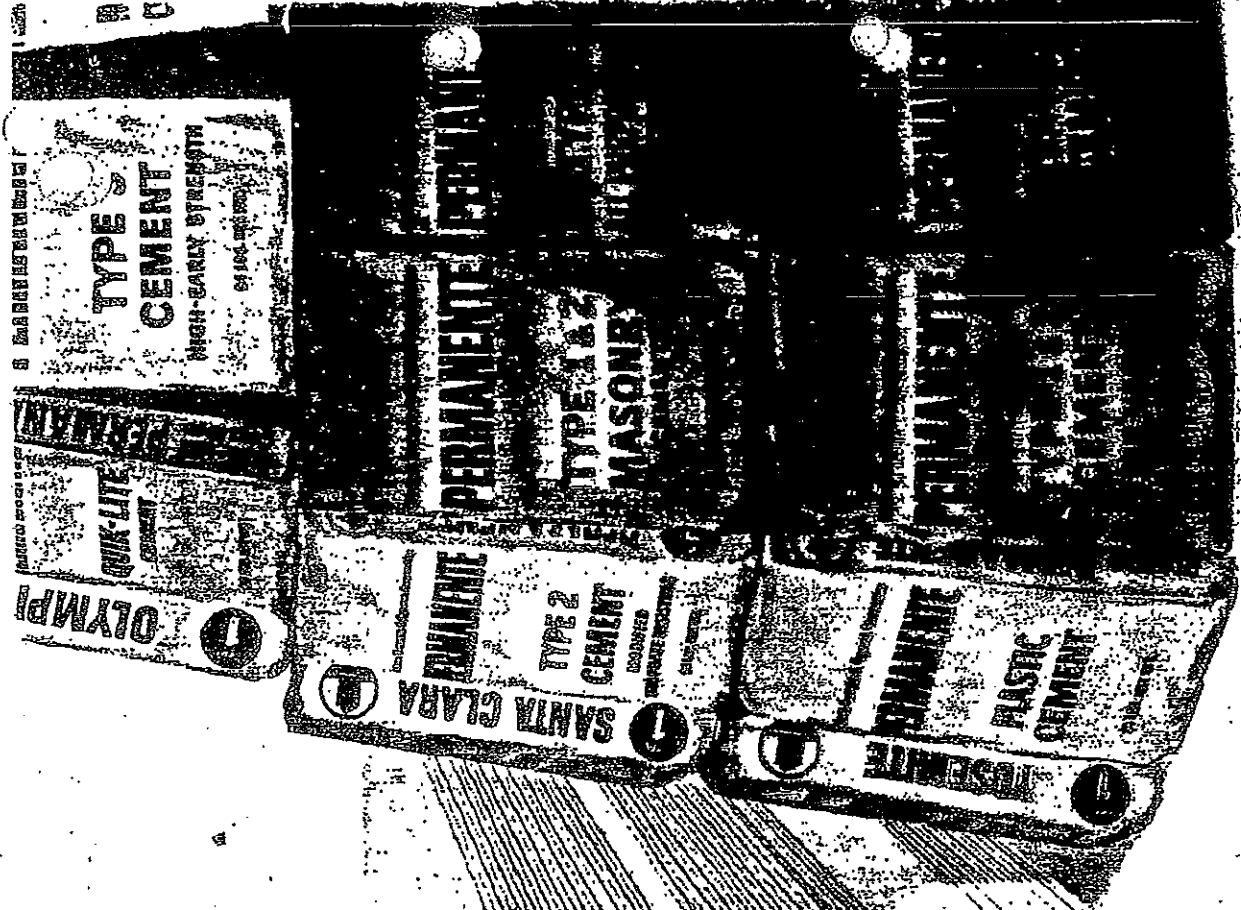
**KAISEER
GYPSUM**

**3-PURPOSE
JOINT
COMPOUND**

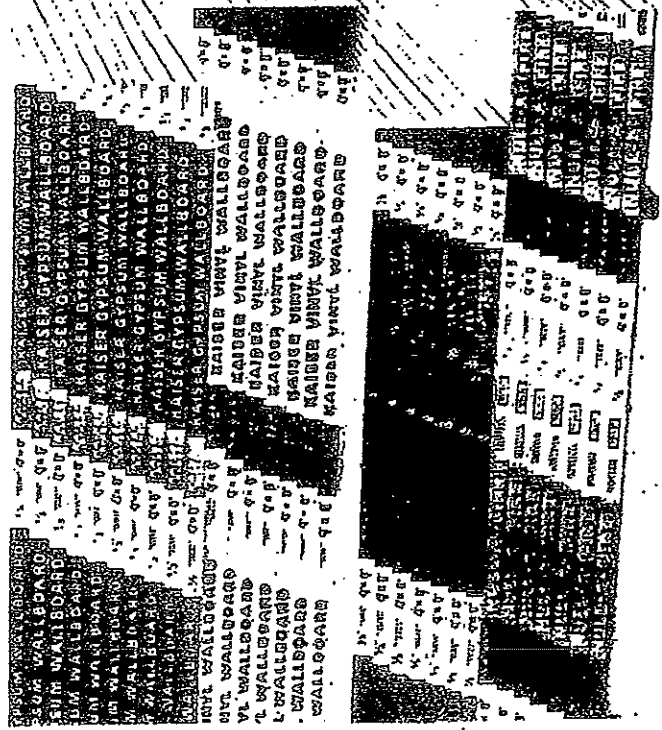
MADE IN
U.S.A.
KAISEER
GYPSUM

0050C

6-62



0050D



6-63



drywall accessories

Pre-Mix Joint Compound. Pre-Mix Joint Compound is used for filling gypsum board joints, embedding joint reinforcing tape, finishing joints and covering and finishing nailheads and metal cornerbead. Hand or machine applied. Coverage: 62 pounds will cover the joints on approximately 500 sq. ft. of gypsum board surface. Available in 62 pound container, 12 pound container and 50 pound carton.

Pre-Mix Topping Compound. Pre-Mix Topping Compound is used for topping and finishing gypsum board joints. Topping compound provides good workability, minimum shrinkage and easy sanding. Hand or machine applied. Coverage: 62 pounds of topping compound will provide for the joint topping and finishing of approximately 750 sq. ft. of gypsum board. Available in 62 pound container and 50 pound carton.

Three Purpose Compound. All-purpose dry powder compound used for taping, topping and finishing of gypsum board joints, nailheads and metal cornerbead in preparation for final decoration. In addition, it can be used for texturing gypsum board surfaces. Coverage: Three-coat joint treatment will require approximately 75 pounds to cover joints on 1,000 sq. ft. of gypsum board surface. Available in 25 pound bag.

Joint Reinforcing Tape. Perforated paper reinforcing tape with chamfered and slit edges. A high-quality product providing easy bedding with joint compounds and designed to resist joint cracks, blisters, edge cracking, wrinkling and ridging of the joints. Coverage: 500 ft. roll will cover the joints on approximately 1,000 sq. ft. of gypsum board surface. Available in 75, 250 and 500 foot rolls.

Cover-Tex Wall Texture. Cover-Tex is a dry powder wall texture product used to produce a wide range of texture effects when applied over properly prepared gypsum wallboard surfaces. For hand or machine application. Coverage: 50 pounds of Cover-Tex will provide texture coverage over approximately 500 sq. ft. of surface. Available in 50 pound bag.

K-Spray Ceiling Texture. Dry powder K-Spray is a lightweight aggregate texture for use over gypsum board or interior concrete ceilings. It is formulated for excellent white color and hide, easy mixing and easy application. K-Spray is designated for use with large capacity pumping systems which have continuous agitation in paste hoppers to prevent aggregate flotation. Coverage: 32 pounds of K-Spray will provide a 1/8" thick texture for approximately 250 sq. ft. of surface. Available in 32 pound bag.

Do's and Dont's

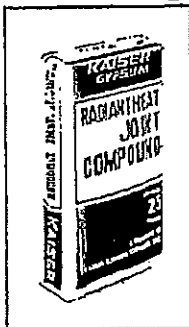
DO

1. Perform regular inspection
2. Perform prescribed lubrication
3. Keep machine clean of dust, especially around motors and air cylinders
4. Make sure work area is clean and free of nails, lumber and debris
5. Keep machine in good repair with approved parts
6. Protect machine against water damage in transit

DON'T

1. Over lubricate
2. Perform maintenance, adjustments or inspection with electrical power connected to machine
3. Overtighten fasteners, steering chain or cutting belt
4. Change factory setting on air compressor check valve
5. Allow cutters to become so dull that they can't be reground
6. Mix reground cutter blade sets

System Components



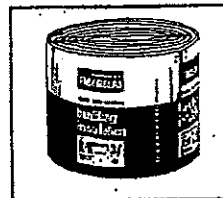
Radiant Heat Joint Compound



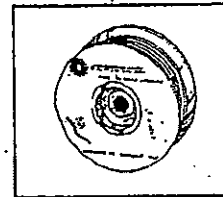
Radiant Heat Surfacing Compound



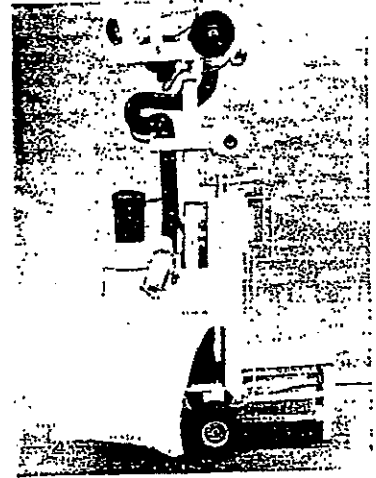
K-Spray Ceiling Texture



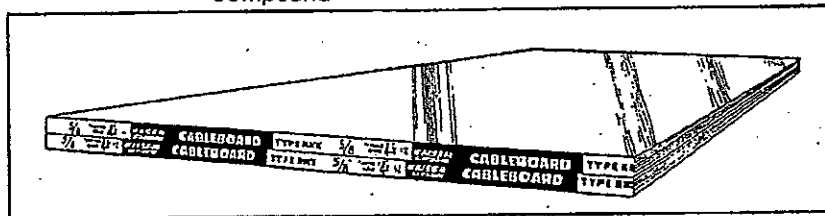
Glass Fiber Building Insulation



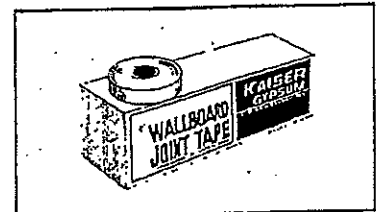
Sunwarm "K" Series Heating Cable



Cable Embedding Machine



Type RHX 5/8" Cableboard



Cableboard Joint Tape

0050F

**QUALITY BUILDING
MATERIALS**

Gypsum Wallboard and Accessories • Vinyl
Surfaced Gypsum Wallboard • Vinyl Tack-
board • Acoustical Ceiling Tile and Plank
Fir-Tex® Insulating Board Products • Sus-
pended Ceiling Systems

How to repair
walls and ceilings
in your home

0050G

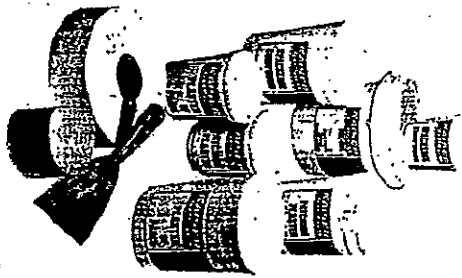
**KAISER
GYPSUM**

KAISER GYPSUM COMPANY, INC.
300 Lakeside Drive, Oakland, California 94604

KGC 417-S/68

Litho in U.S.A.

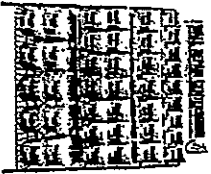
© Copyright 1968, Kaiser Gypsum Co., Inc.



PROFESSIONAL-QUALITY
PRODUCTS IN HOME-SIZE
PACKAGES

**KAISER
GYPSUM**

6-66



**SAVE MONEY
SAVE TIME
BUY ONLY
WHAT YOU NEED**

When a wall or ceiling is damaged, you want to repair it properly the first time. This requires the use of good materials and careful workmanship. You need the same high-quality materials used by professionals. But, there is no need to buy in large amounts.

Now you can buy small, home-repair-size packages containing materials preferred by professional contractors throughout the nation—Kaiser Gypsum patching plaster, spackling compound and joint compound. Each product is packaged in its own reusable, convenient, plastic mixing container.

The Wall Repair Center is stocked with the materials you need to do a home repair job. There's no need to search all over the store, or to wait for a salesman to serve you. No time is wasted. Just select what you need, and check it out. For professional results, use Kaiser Gypsum materials...Packed in home-repair-size packages.

Kaiser Gypsum Spackling Compound



Spackling compound is a fast-drying material, designed for filling hairline cracks prior to painting. Simply widen the crack with a sharp-edged instrument, wet the surface and apply a paste-like mixture of spackling compound with a putty knife. Sandpaper lightly, after the compound hardens. Then paint or decorate.

Kaiser Gypsum Patching Plaster

This material stays workable longer, and is designed for use when patching holes and large cracks. Cut away all loose and weak plaster or wallboard. Undercut the edges to form an anchor. If a hole goes all the way through the plaster or wallboard, stuff a wad of cheesecloth or newspaper into the opening so the plaster does not fall through. Wet the area to be patched, and apply a thick paste of patching plaster. Work from the edge of the crack or hole toward the center, pressing patching plaster firmly as you go. Smooth the patch. Sandpaper when dry, then decorate.



Kaiser Gypsum Wallboard Tape



Tape is used to bridge joints in new gypsum wallboard panels. The correct use of this product prevents the formation of vertical cracks caused by minor shifting of the structure. Edges of Kaiser Gypsum wallboard taper slightly to accommodate the tape and joint compound. A careful taping job cannot be detected after the wall is decorated.

Kaiser Gypsum Dry Joint Compound



Formulated especially for use with wallboard tape to make perfect joints, Kaiser Gypsum Dry Joint Compound is easy to use. Mix as directed to desired consistency and spread thinly the length of the joint. Center the tape on the joint and press firmly into place. Spread a second layer of joint compound on top of tape and smooth with a broad knife and allow to dry. Add a wider third coat over joint. Smooth with broad knife and sandpaper tightly; then decorate.

Kaiser Gypsum

3-Purpose Premix Joint Compound

This joint compound is factory-blended with the exact amount of moisture to meet professional specifications. Nothing need be added before use. Use directly from container to tape joints, finish and texture walls and ceilings.



Kaiser Gypsum Plaster of Paris



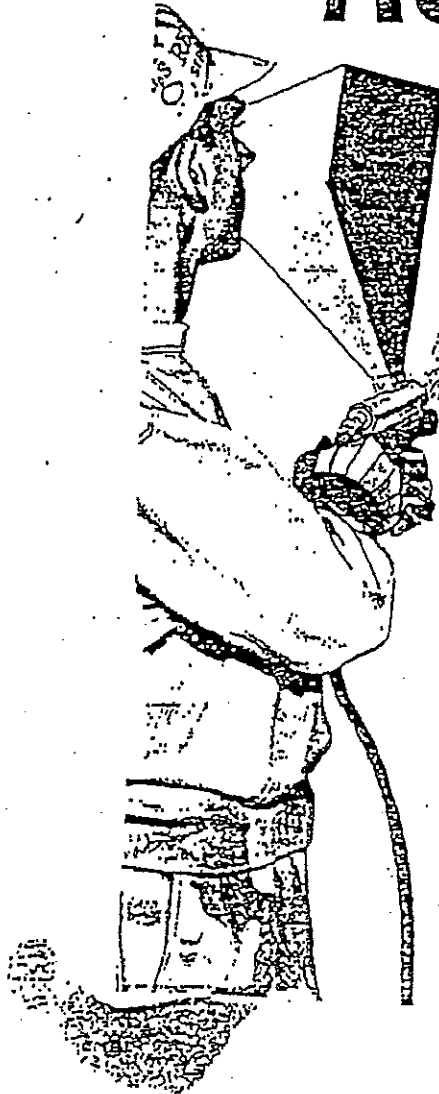
Plaster of Paris generally is not used for patching walls or installing partitions because it hardens too quickly and shrinks a little in the hardening process. However, this material is so frequently used by home hobbyists for making casts, molds and forms that it is included in the Wall Repair Center as a service to customers.

0050H

RED TOP*

AUDICOTE

a new
acoustical plaster



beautiful texture... quickly applied...

LOW-COST APPLICATION ... by either spray or trowel; add only water to make a smooth-working plaster. Audicote has exceptional adhesive qualities, bonding to gypsum basecoat plaster, monolithic concrete or other firm, clean surfaces. It is ideal for use in schools, churches, hospitals—wherever beauty and sound-control are desirable.

SOUND-ABSORBENT TEXTURE ... gives Audicote a .60 noise reduction coefficient, maximum. It dries to form a porous, sound-deadening surface; may be hand-finished or left with an attractive machine-applied texture. Basically mineral in composition, Audicote will not support combustion. Satin White Audicote has .65 light reflectance value, and may be spray-painted without appreciable effect on sound-absorbent quality.



Ask your U.S.G. Dealer for full details, or write Dept. PL-25,
203 W. Adams Street, Chicago 6, Illinois, U.S.A., U.S. Pat. Off.

UNITED STATES GYPSUM

The greatest name in building

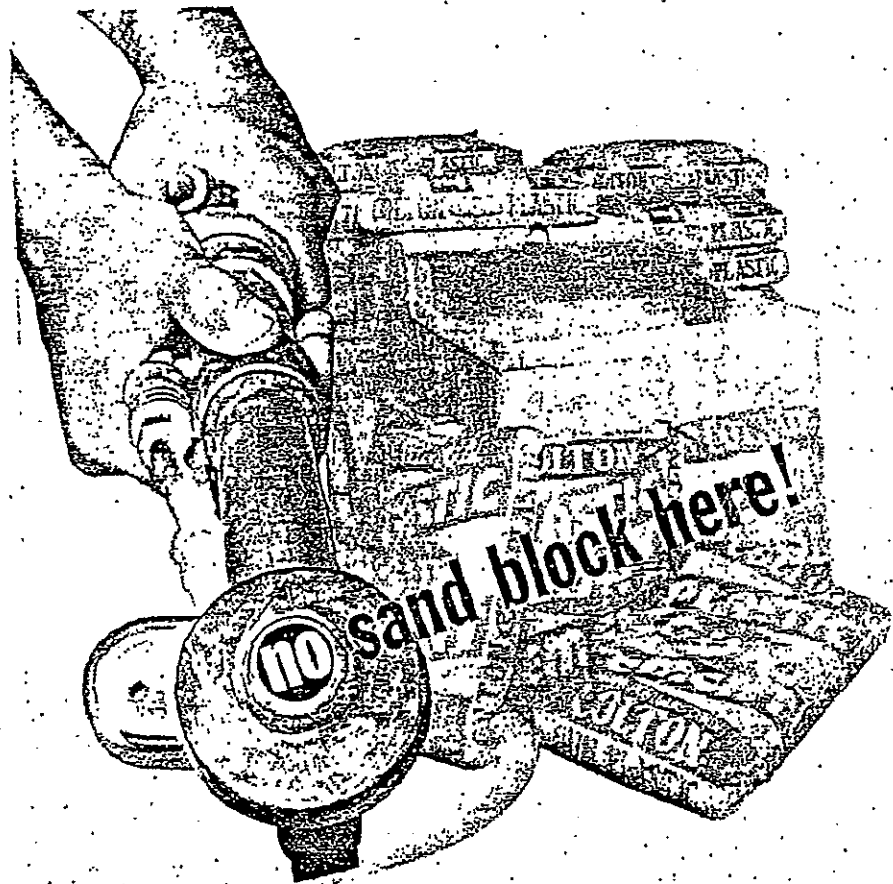


00501

TAB 12

6-68

Here Is Your Advance Copy of Our Advertisement
 Scheduled for the Next Issue of The California Plasterer



...not with COLTON "GUN PLASTIC"

(A Plastering Industry First)

Now... a new product that eliminates sand blocks... wastage... guesswork. Colton "Gun Plastic" Cement comes tailor-made for use with the plastering machine... works as well with the trowel as with the gun.

And here's why... asbestos fibers and plastic cement are scientifically blended under factory controlled conditions to guarantee that the mix is right for the plastering machine. Each sack is uniform with the

right amount of fibers and the right amount of plastic cement to prevent sand blocks... to make all your jobs "profit right."



Colton "Gun Plastic" Cement
 is ready for immediate delivery.
 See your building material dealer
 ... or call 678-2111
 California Portland Cement Company
 412 South Flower Street
 Los Angeles 47, California
 MIttman 5-2111

0050J

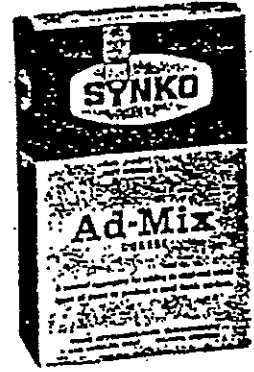
Advertisement Reservations
 Original Start Fall 1966 available
 Reprints: The California Plasterer
 Always Late and Company
 247 North Central Avenue
 Anaheim 2, California

6-69

IX COARSE

A neutral aggregate for adding to interior or exterior oil or latex paints to produce a sand finish. Addition of Ad Mix does not affect the color of the paint.

1 lb. pkg.	6005	12
5 lb. pkg.	6006	10
25 lb. bag	6007	1



EKTO and TREE TRUNK WHITE

A dual-purpose economical exterior cold water paint for semi-permanent work, and for tree trunk application.

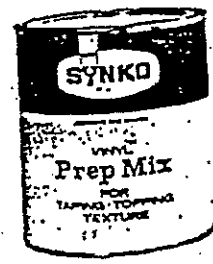
25 lb. bag	6012	1
------------	------	---



TRIPLE DUTY JOINT COMPOUND

An economical joint compound and texture that does three jobs on plasterboard: First coat for bedding tape, second and third coats for topping. Available in two sizes and a 4 lb. combination package containing 75 feet of joint tape.

5 lb. pkg.	6015	10
25 lb. bag	6016	1
4 lb. combination	6017	10



VINYL PREP MIX

An all-purpose vinyl joint compound in a ready-to-use form. It is designed for use in reinforcing joints, and concealing joints and nailheads in plasterboard construction.

1 gal. can	6020	4
5 gal. can	6021	1

JOINT TAPE

Specially formulated paper tape with controlled water absorption, minimum stretch and shrinkage. Spark type, with bevelled edges. Works exceptionally well in power and hand tools.

75' roll	6025	20
250' roll	6026	20
500' roll	6027	10



EZE TEX

An economical casein-bound texture paint used by the production applicator.

25 lb. bag	6030	1
------------	------	---

June, 1972

6-70



SYNKO

Drywall Construction Products

TRIPLE DUTY JOINT COMPOUND — An economical Joint Compound and Texturing Compound that does three jobs on plasterboard:

1. First coat to bed the tape.
 2. Topping Compound for the second and third coats.
 3. For texture painting after the joints and nailheads have been prepared.
- Available in 5-lb. pkg. and 25-lb. bag.

VINYL PREP MIX — An all purpose joint compound in ready to use form. VINYL PREP MIX Joint Compound is designed for use in reinforcing and concealing joints and nailheads in plasterboard construction. Available in one- and five-gallon pails.

SYNKO TAPE — A specially formulated paper tape with controlled water absorption and minimum stretch and shrinkage. Bevelled edges. Made in both spark and slit perforated. Works exceptionally well in power tools, as well as hand tools. Use in conjunction with Synko Joint Compound or Synko All Purpose Compounds. Available in 75', 250' and 500' rolls.

SYNKO EZE TEXT TEXTURE PAINT — An economical powder texture paint used by professionals on volume jobs. Application by brush or spray. Average coverage—15 square feet per pound. Available in 25-lb. bag.

0052

THE SYNKOLOID COMPANY
Compton, California 90221 Atlanta, Georgia 30336

2-17

09

6-71

SYNKO

VINYL Tex-Wall

VINYL TEX-WALL SMOOTH & SAND FINISH

GENERAL: Vinyl Tex-Wall beautifies and completely transforms the appearance of any room. Vinyl Tex-Wall not only produces unusual decorative effects, it covers and hides imperfections in the wall better than conventional wall finishes. For that reason, Vinyl Tex-Wall is the perfect decorative finish for plaster walls that are discolored or cracked. Applied over gypsum board, Vinyl Tex-Wall covers and hides taped joints and produces a beautiful texture finish. To completely modernize any room whether it be plaster, gypsum board, cement block or concrete, use Vinyl Tex-Wall.

APPLICATION: Surface to be coated should be free of dirt, chalk, dust or loose plaster.

Should any metal be exposed such as nail heads or cornerbead, touch-up with an oil base primer-sealer to eliminate rusting. Use directly from can. Vinyl Tex-Wall can be applied with most any type brush, but a semi-Dutch type is preferable because of the time saving factor.

Do not brush out as is the practice with conventional coatings but apply generously to the surface. The type of texture tool used will depend largely on the type of texture pattern desired. Among the common texturing tools used are sponge, whiskbroom, stippler, brush, metal or celluloid triangle, crumpled newspaper, etc. Excessive texture on woodwork and trim can be easily removed before setting up with a wet sponge.

TINTING: Vinyl Tex-Wall may be tinted with universal tinting colors.

COVERAGE: Approximately 100 sq. ft. per gallon.

CLEAN-UP: Vinyl Tex-Wall is easily cleaned from brush and tools with soapy water.

IMPORTANT: PROTECT AGAINST FREEZING

DO NOT APPLY DURING TEMPERATURE PERIODS OF 50 deg. OR UNDER

CAUTION! Do not take internally. Close container after each use. **KEEP OUT OF REACH OF CHILDREN.**

THE SYNKOLOID COMPANY

COMPTON, CALIFORNIA 90221

ATLANTA, GEORGIA 30334

0053

14

Congoleum

FIRECHECK[®]

VINYL WALL COVERING

Congoleum

KAISER GYPSUM KAISER GYPSUM KAISER GYPSUM KAISER GYPSUM KAISER GYPSUM KAISER GYPSUM KAISER GYPSUM KAISER GYPSUM

KAISER GYPSUM

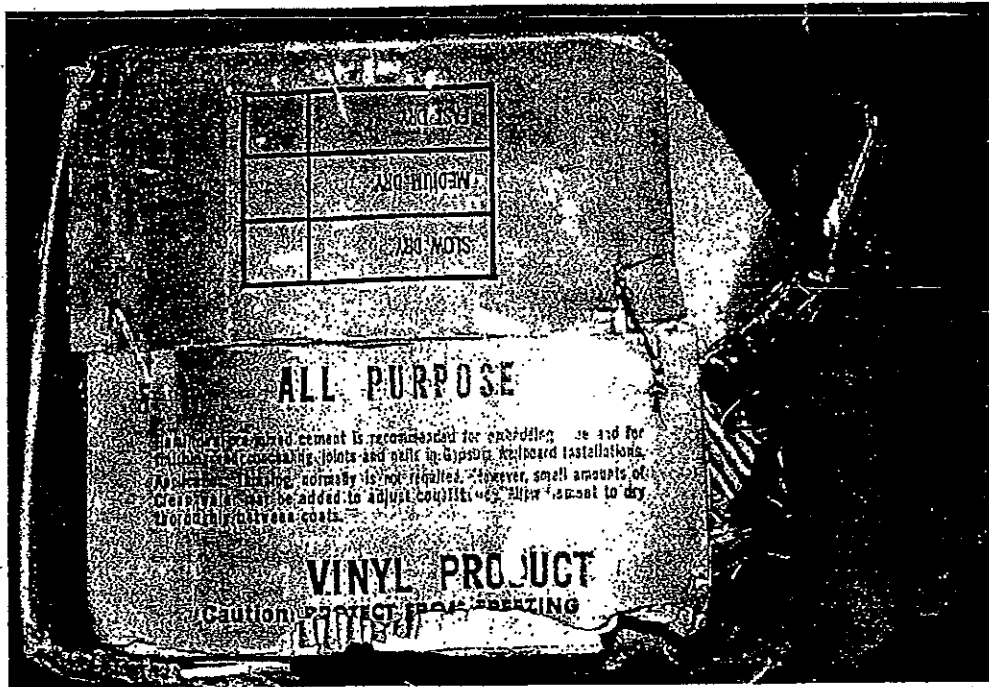
NULL-A-FIRE

5/8" x 4' x 8'

KAISER GYPSUM KAISER GYPSUM KAISER GYPSUM KAISER GYPSUM

0054

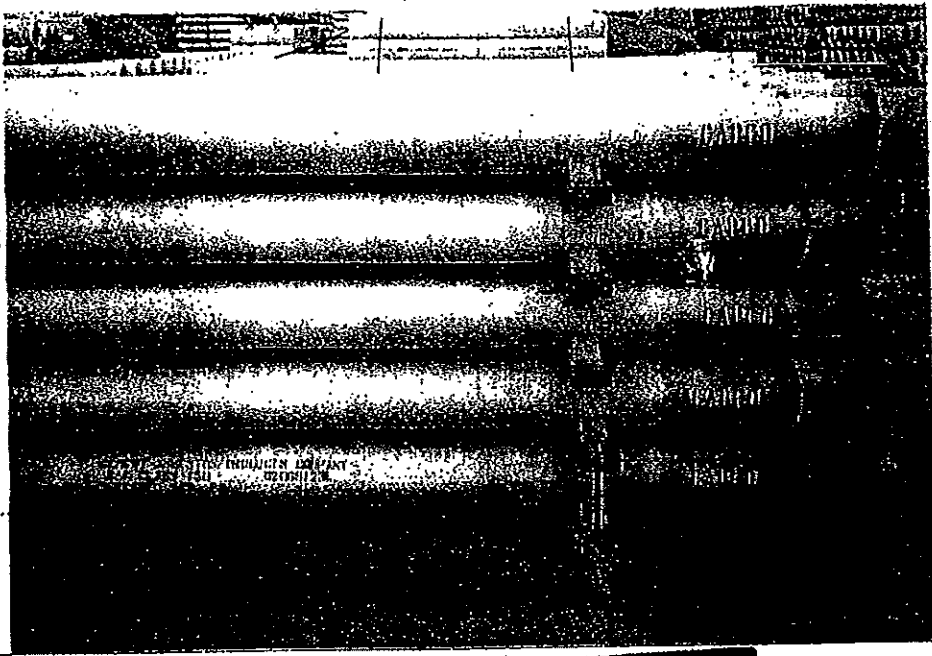
6-73



0055

PLAINTIFF'S
EV. EXHIBIT 1
968631

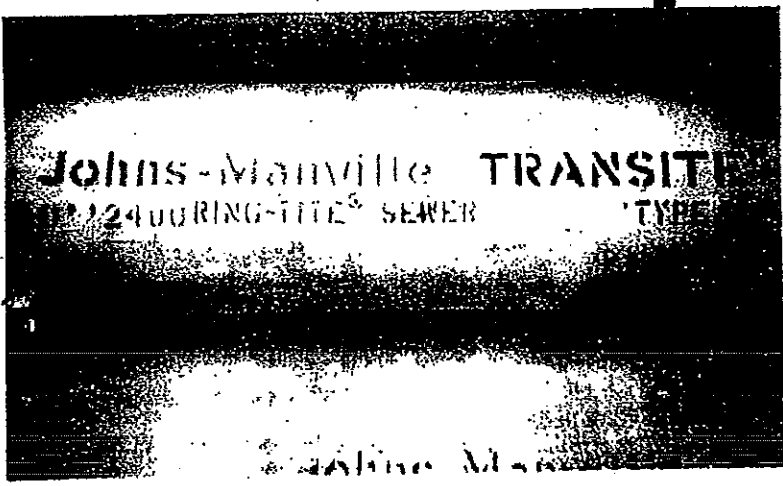
6-74



capco PERMAFLEX WATER PIPE MATERIAL SPECIFICATION CA102 69

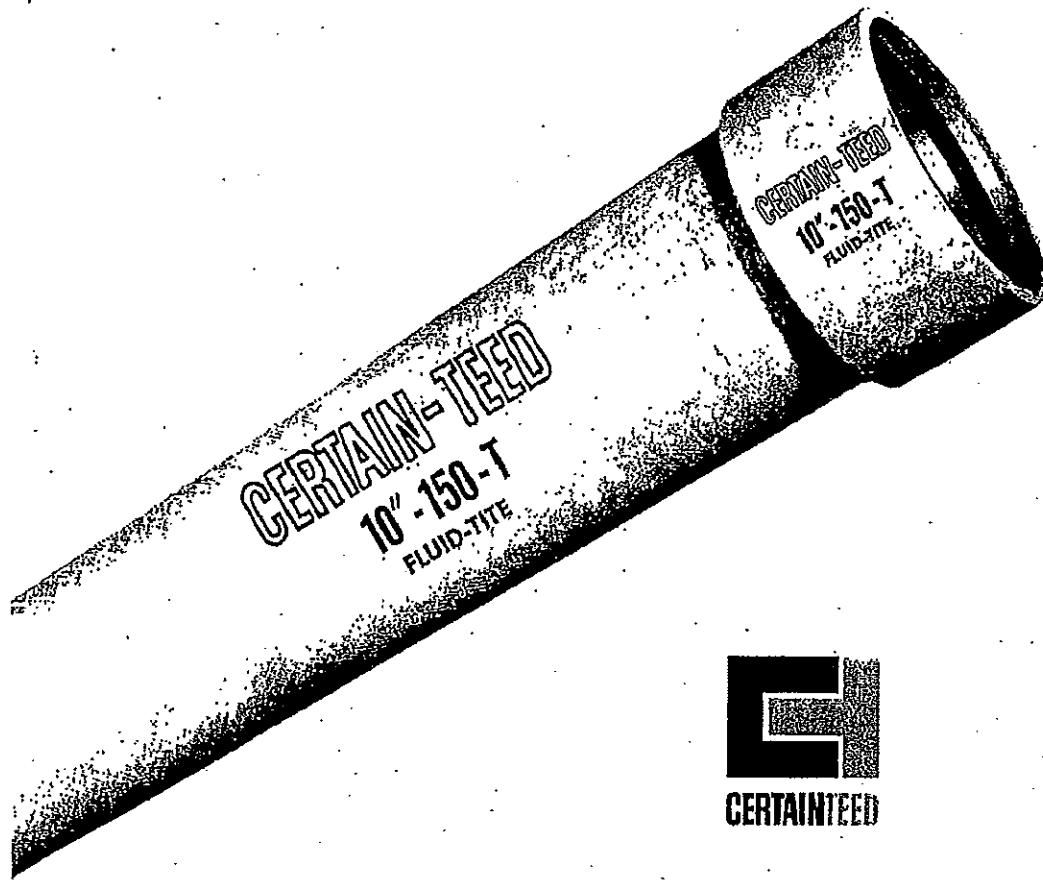
CA

CEMENT ASBESTOS PRODUCTS COMPANY



0056

6-75



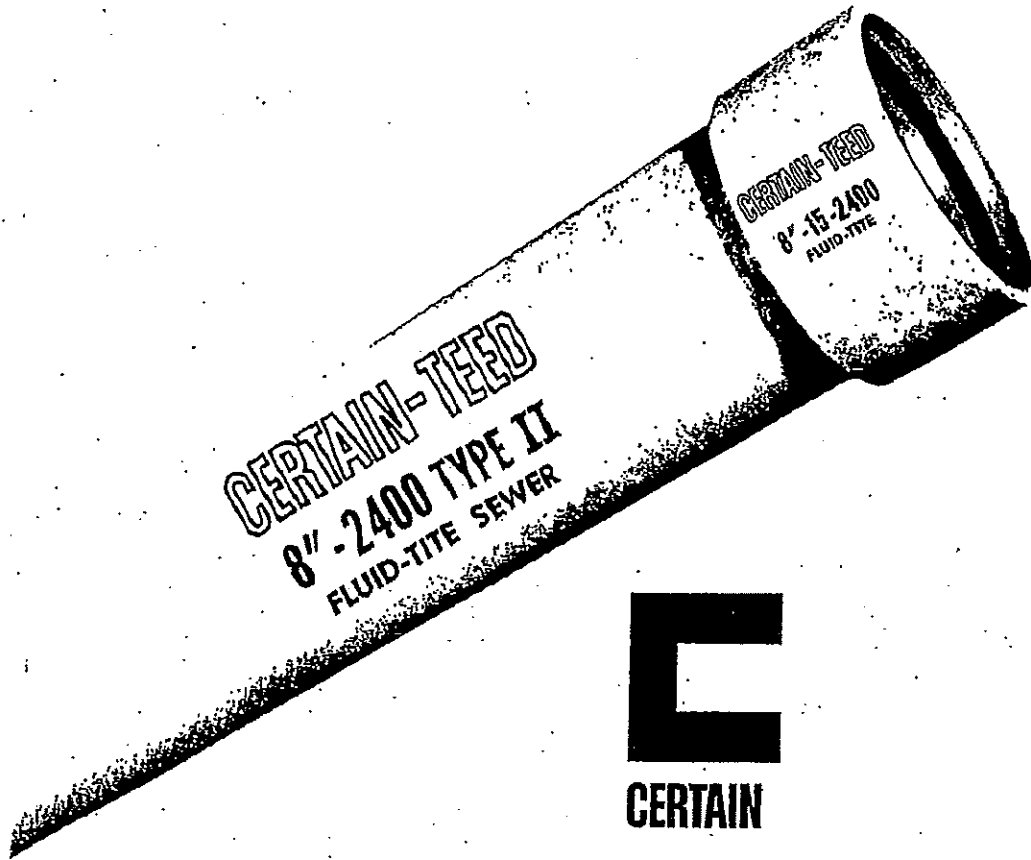
FLUID-TITE®

ASBESTOS-CEMENT PRESSURE PIPE SPECIFICATIONS



CERTAIN-TEED FLUID-TITE and CERTA-SPACER are registered trademarks of Certain-teed Products Corp., Valley Forge, Pa.

6-76



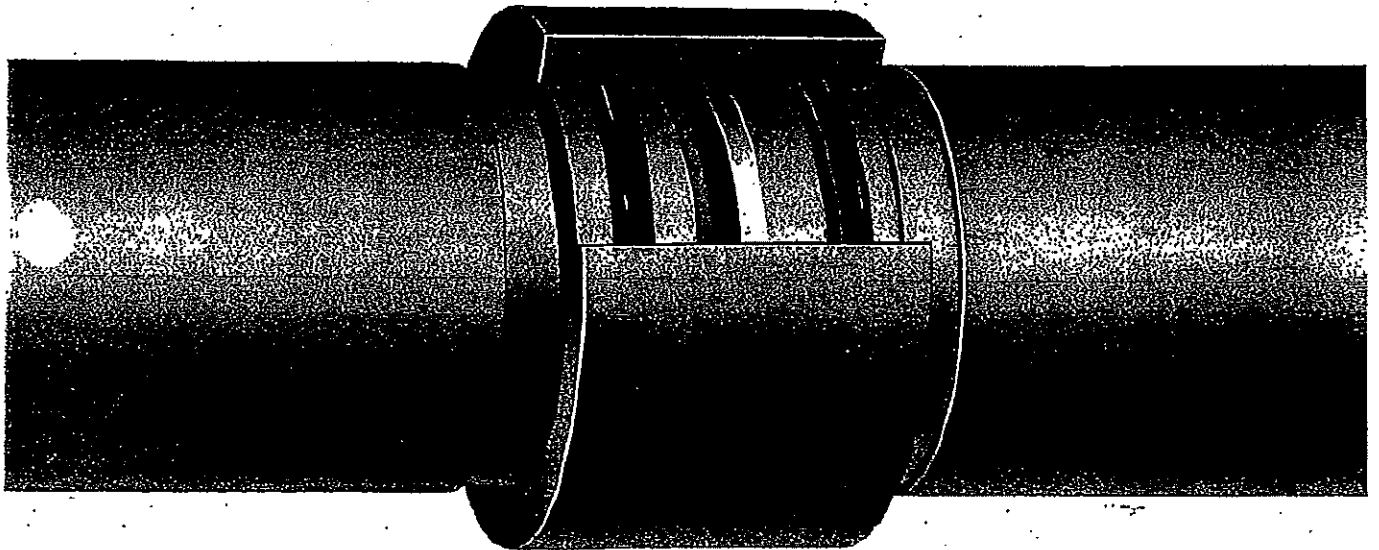
FLUID-TITE[®]
ASBESTOS-CEMENT
NON-PRESSURE SEWER PIPE
SPECIFICATIONS

0058

6-77

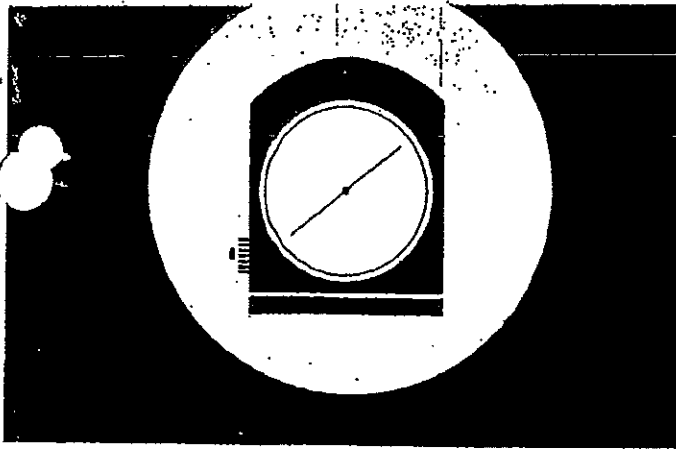
CERTAIN-TEED FLUID-TITE and CERTA-SPACER are registered trademarks of Certain-teed Products Corp., Valley Forge, Pa.

FLUID-TITE.
Asbestos-Cement
SMALL DIAMETER SEWER PIPE
and Accessories

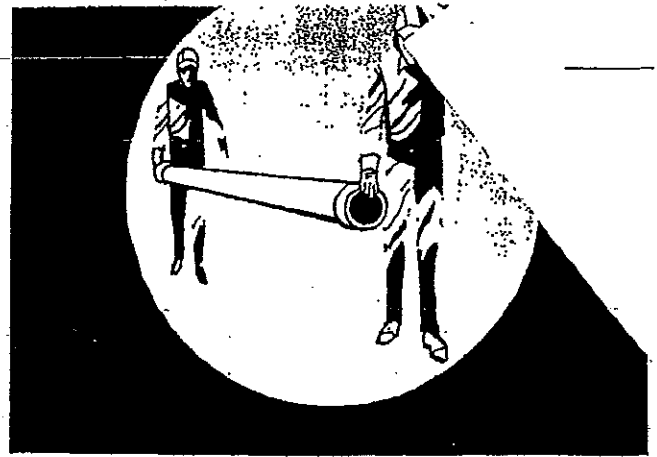


made by **CERTAIN-TEED**
PIPELINES FOR THE NEEDS
OF GROWING AMERICA

0059
8-70



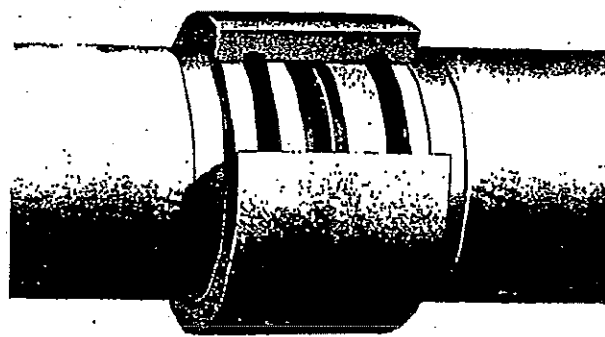
HIGHEST QUALITY—Exacting standards are maintained throughout manufacture. Each length, each coupling is inspected and tested. Result: outstanding performance.



EASE OF INSTALLATION—Lightweight and durable, Certain-teed Asbestos-Cement Pipe goes in fast without need for heavy machinery or special equipment. Can be cut and machined as needed at the jobsite. Result: money saved.

— A GROWING SCIENCE

Mr. St. Clair states: "I purchased Certain-teed Asbestos-Cement Pipe due to its low initial cost, its resistance to corrosion and immunity to electrolysis. My lines have proved to be absolutely trouble-free." He adds: "Since my farm is very level, I use sprinkler irrigation on this flat land, instead of the 'flood system' often used. I can irrigate my fields at a much more uniform distribution of moisture over the entire field, and at a great saving in the amount of water needed." (The pipe is connected to three wells and Mr. St. Clair can irrigate with one or all wells at one time.)



CERTAIN *FLUID-TITE® COUPLING*

This exclusive, patented coupling seals joints immediately and permanently. More pipe can be laid per hour with fewer men... labor required is drastically reduced.

- QUICKER INSTALLATION
- CONNECTS EASILY, EVEN UNDER WATER
- PERMANENT TIGHT SEAL
- ABSORBS VIBRATION
- ALLOWS DEFLECTION AT EACH JOINT
- CERTA-SPACER™ BAND SPACES PIPE ENDS

0060

679



Gold Bond ASBESTONE
brings new styling, new color to
Asbestos-Cement Roofing and Siding

FLINTKOTE
Roofing and
Siding

0061

4-80

The advertisement features a black and white illustration of a worker in a hard hat and work clothes, carrying a large sheet of asbestos-cement siding. In the background, there is a large, multi-story house with a gabled roof, also featuring asbestos-cement siding. The scene is set in a rural or mountainous area with trees and a fence. The text "FLINTKOTE Roofing and Siding" is prominently displayed in the upper right corner of the illustration. At the bottom right of the advertisement, the number "0061" is printed in a white box. In the bottom right corner of the entire page, the number "4-80" is handwritten.

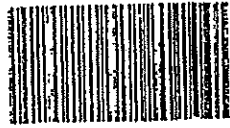


**asbestos-cement
building products**

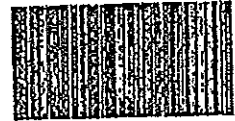
asbestos-cement siding



SUSSEX "22"



DEEP-TEX



CLASSIC-SHAKE



CHIODA-LEET



CHIODA-SHAKE

WOOD-GRAIN

corrugated asbestos-cement

Careystone


ROOFING AND SIDING

42" corrugations

also
flat asbestos-cement
products

0062

681


CLASSIC-SHAKE
SIDING
 WITH NEW PLASTICRYLIC FINISH and exclusive PERMANIZING

A HIGH QUALITY PRODUCT FROM NATIONAL Gypsum COMPANY
 U.S. PATENT OFFICE
 TRADE MARK
 GOLD BOND
 PERMANIZING
 3/4" SQUARE



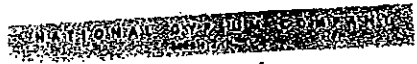
ASBESTOS
PERMABOARD

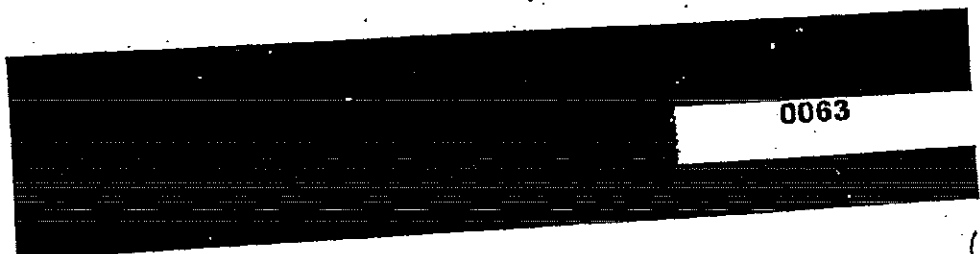
SHEET SIZE: 4' x 8' • THICKNESSES: 3/16" and 1/4"

A 401 building board made of asbestos fibers and Portland cement. Excellent for interior and exterior use on walls, ceilings, partitions, siding, tanks, etc. Dozens of applications in the home, on the farm, and in commercial and industrial buildings.

Gold Bond Asbestos PermaBoard is fireproof, termite-proof, rot-proof and weatherproof. It can be scrubbed, scraped and sanded without harm... will not rot or corrode. Easily fitted—can be sawed, or scored and broken. Easily applied with salts or suitable adhesives. Joints can be coated or covered with battens. Needs no protective coating, but can be painted if desired.

Form A-252





6-88

COMPLIES WITH FEDERAL SPECIFICATIONS TITLE PART 8, CLASS A AND B

Gold Bond

**NON-PERFORATED
ASBESTOS PANELS**

**RIPPLETONE
WHITE**

NATIONAL GYPSUM COMPANY

Gold Bond

NATIONAL GYPSUM COMPANY

Gold Bond

**Gold Bond
ripple-tone**

RY - 5411 GY - 5411 RY - 5411 RY - 5411

0064

6-83



Careystone

ASBESTOS-CEMENT BOARD

THE PHILIP CAREY MFG. CO., LOCKLAND, CINTI, O.

COVERALL BOARD

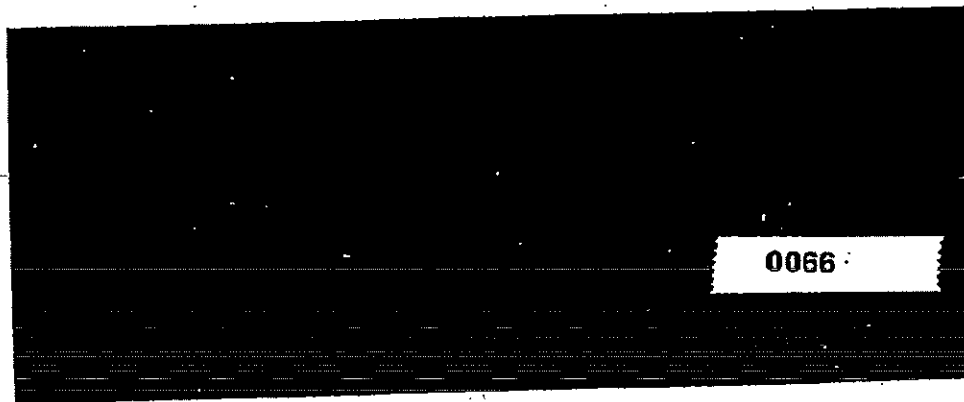
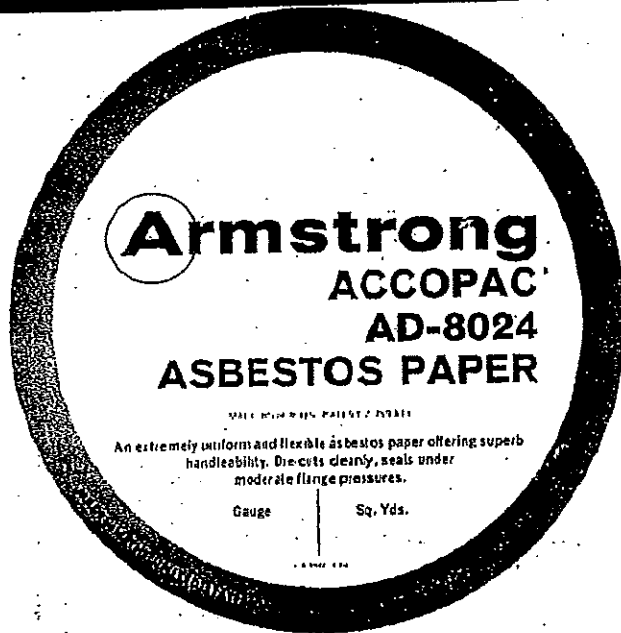
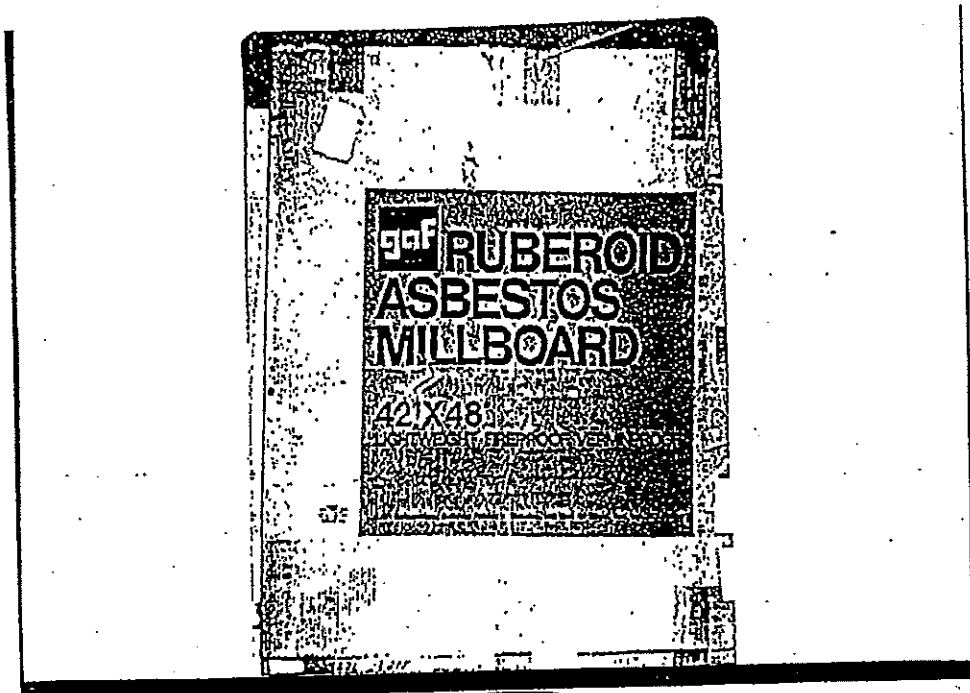
V-7-7(3) 50m 1147

KEEP DRY. DO NOT APPLY THESE SHINGLES
TO DAMP OR WET SURFACE


CAREYSTONE
ASBESTOS-CEMENT
SIDING

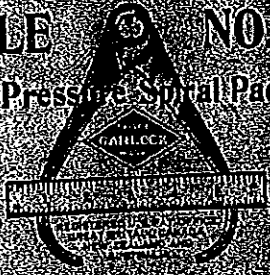
0065

6-86



6-85

F 07
GARLOCK
STYLE NO. 68
RING PACKING.

 REGISTERED U. S. PAT. OFFICE
 GREAT BRITAIN, CANADA,
 NEW ZEALAND AND
 AUSTRALIA
THE GARLOCK PACKING CO.
 Weight.....Lbs.....Oz

GARLOCK
STYLE NO. 150
High Pressure Spiral Packing

 REGISTERED U. S. PAT. OFFICE
 GREAT BRITAIN, CANADA,
 NEW ZEALAND AND
 AUSTRALIA
THE GARLOCK PACKING CO.

SIZE	LBS	OZ

0067

6-86



Flexitallic
BLUE SPIRAL WOUND
FLANGED JOINT TYPE GASKETS

TO REORDER GIVE ALL DATA ON THIS TAG

QTY. DWG. I. D. O. D. THICK

ITEM

METAL
304 SS

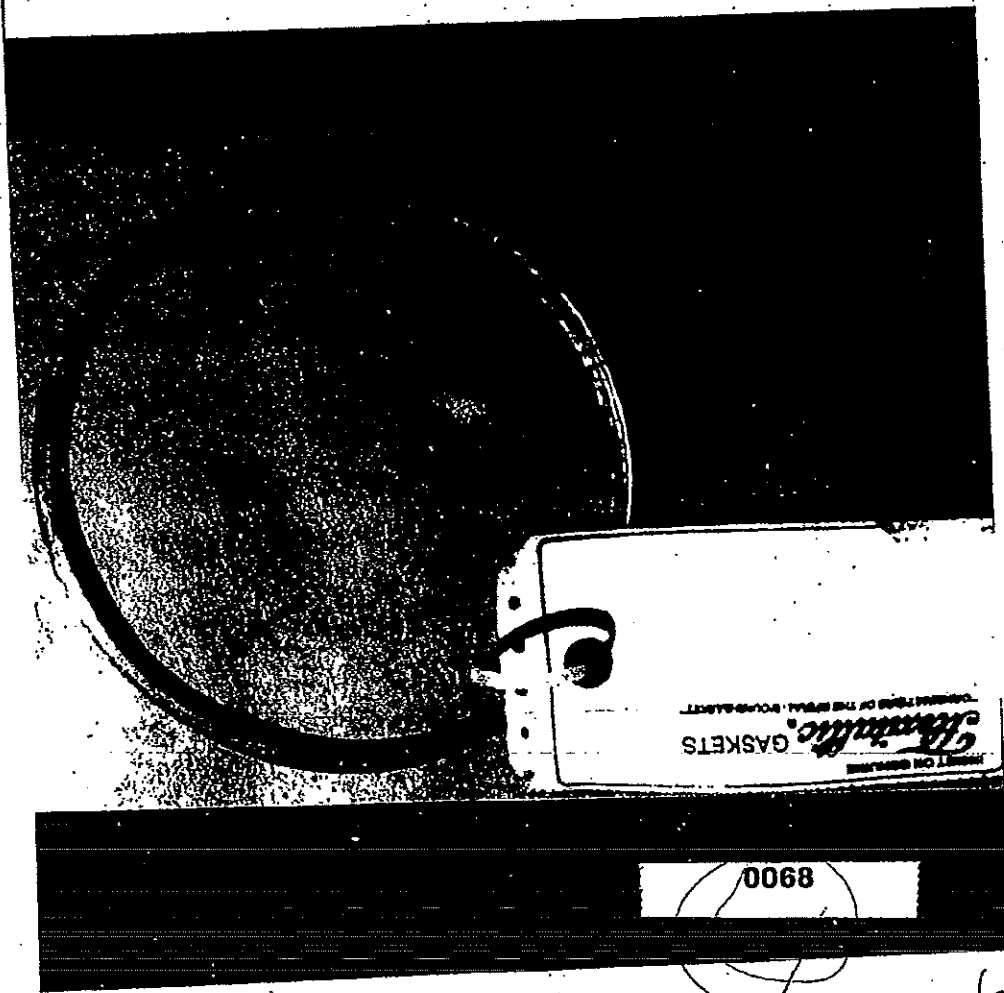
FILLER
ASB

P.O. #

INVOICE #

OTHER:

FLEXITALLIC GASKET CO. INC. P.O. BOX 680, CAMDEN, N.J. 08102



CONSISTING OF THE SPIRAL WOUND GASKET
Flexitallic
GASKETS
MADE IN U.S.A.

0068

6-87



There's Something
NEW
In Gaskets



Problem-Solving Experience
It's common to ASME members and to Flexitallic Gaskets

For a history of technical competence and a reputation of the highest quality of work, you get it again in the design and manufacture of gaskets. The design and manufacture of gaskets is a business of tremendous responsibility and importance.

The design and manufacture of gaskets is a business of tremendous responsibility and importance. The design and manufacture of gaskets is a business of tremendous responsibility and importance.

Our spiral-wound gaskets are designed to meet the most exacting requirements of the industry. They are made from the finest materials and are manufactured to the highest standards of quality.

Our spiral-wound gaskets are designed to meet the most exacting requirements of the industry. They are made from the finest materials and are manufactured to the highest standards of quality.

Flexitallic is the originator of the spiral-wound gasket and has been a leader in its design and manufacture for over 40 years. Our spiral-wound gaskets are made from the finest materials and are manufactured to the highest standards of quality.

Flexitallic SPIRAL-WOUND GASKETS
FLEXITALLIC GASKET COMPANY, INC. Central Office and Plant P.O. Box 200
Lumberton, N. J. 07031 Phone 908-533-7111 New York Office P.O. Box 200
New York, New York 10020 Phone 212-512-2500

0069

6-88

NEG. NO. O-8A

TRADEMARK FILE INFORMATION

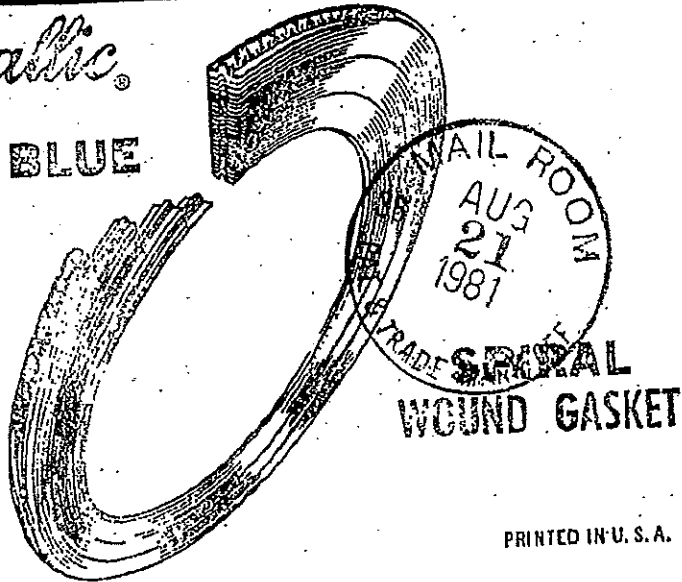
Trademark:	Design - Gasket
Trademark Owner:	Flexitallic Gasket Company
Last Assignee:	Flexitallic Gasket Company, Inc.
Date of First Use in Commerce:	January 19, 1951
Registration No.:	721,010
Date Trademark Registered:	September 5, 1961
Size of Label in Trademark File:	N/A



Receipt of Pictured Label by Patent Office:

Flexitallic

BLUE



PRINTED IN U. S. A.

0070

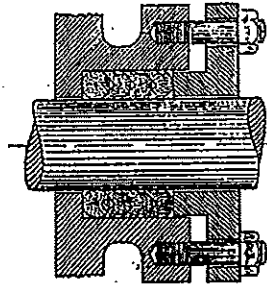
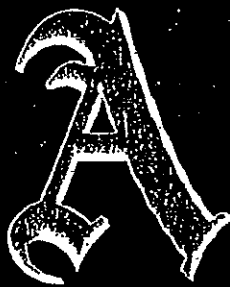
6-8




AMFLEX-PACKINGS

REG. U. S. PAT. OFF.

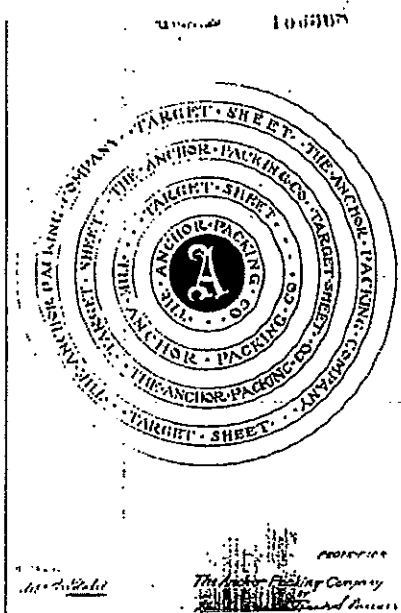
For _____
The Anchor Packing Company

THE ANCHOR PACKING COMPANY

REG. U.S.  PAT. OFF.

Style **ANKOTALLIC**



0071

The Anchor Packing Company
General Offices

6-90

The
Anchor Packing Co.

Style No. **ANKLON**
RING PACKING

Use only on _____

Form 412—© D20 Printed in U. S. A.

A

THE ANCHOR PACKING COMPANY

Reg. U.S. Pat. Off.

Style **ANKLON**


SPIRAL PACKING

Size _____ Weight _____

MADE IN U.S.A.

0072

6-91



THE ANCHOR PACKING COMPANY


Reg. U.S. Pat. Off.

Style **VY-FLEX**


SPIRAL PACKING

Size _____ Weight _____

FORM 424 MADE IN U.S.A.



The
Anchor Packing Co.





VY/FLEX

Style No. _____

RING PACKING


Use only on _____


FORM 412—©.D20 Printed in U. S. A.

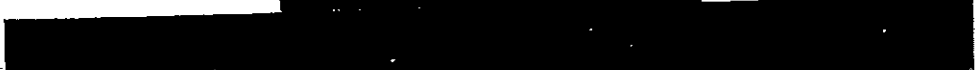
0073

6-92


THE ANCHOR PACKING COMPANY
 Reg. U.S. Pat. Off.
ANKLON
SPIRAL PACKING
 Size _____ Weight _____
11314 424 MADE IN U.S.A.




The Anchor Packing Company
San Francisco, California



0074

6-93

JOHN CRANE PACKING

MINI-T-PAK

1500 RINGS

#A910

1 x 1-1/2"

ITEM

PT. #202-01-0130-0100

CRANE PACKING COMPANY, MORTON GROVE, ILL.

METALLIC • PLASTIC • FABRIC

JOHN CRANE

CHEMLON

STYLE

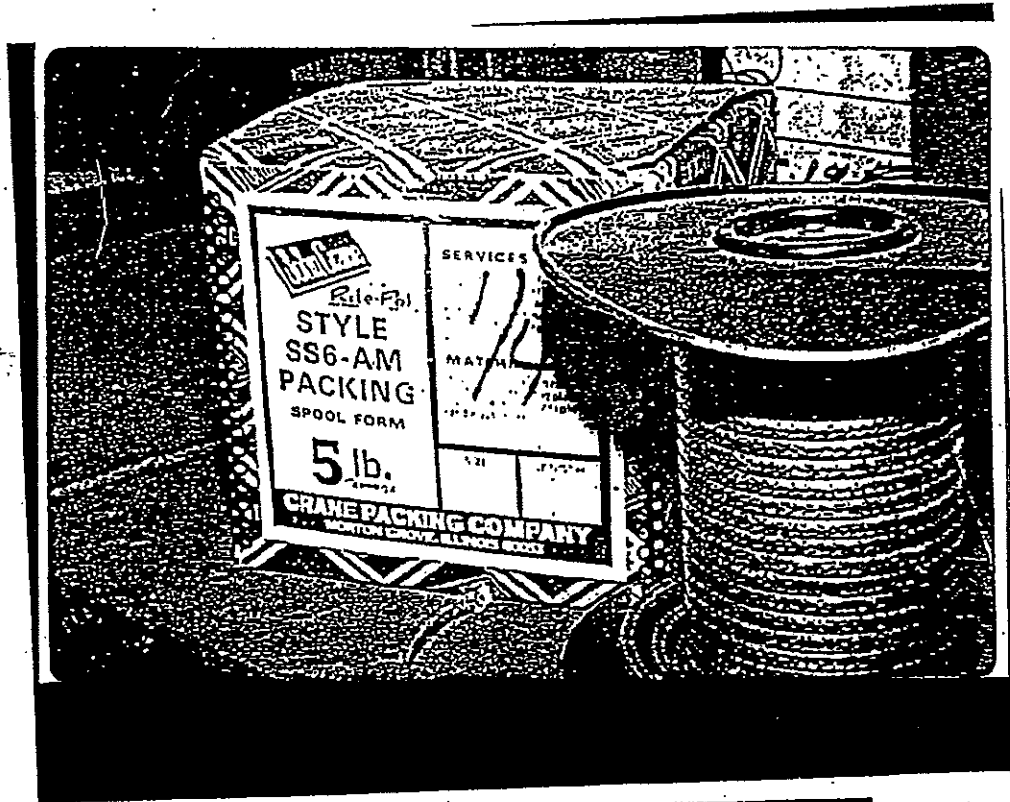
WEIGHT

SIZE

CRANE PACKING COMPANY, CHICAGO 13, U.S.A.

0075

6.94



 Rite-Pak™															
PACKING STYLE 810															
SPOOL FORM															
5 lb. APPROX.															
<table border="1" style="width: 100%;"> <tr> <td style="width: 50%;">SERVICES</td> <td style="width: 50%;">MATERIALS</td> </tr> <tr> <td> Medium speed rotary shaft applications to 1800 FPM. For hot or cold water, cold oils, mild caustics or acids and similar services. Temperatures: to 500° F. pH range: 6-8. </td> <td> Square braided from high quality Canadian asbestos yarn, impregnated with a high flash point lubricant and graphite. </td> </tr> <tr> <td> <table border="1" style="width: 100%;"> <tr> <td style="width: 50%;">SIZE</td> <td style="width: 50%;">LENGTH</td> </tr> <tr> <td style="height: 40px;"></td> <td style="height: 40px;"></td> </tr> </table> </td> <td> <table border="1" style="width: 100%;"> <tr> <td style="width: 100%;">FORMULA</td> </tr> <tr> <td style="height: 40px;"></td> </tr> </table> </td> </tr> <tr> <td colspan="2" style="text-align: center;"> CRANE PACKING COMPANY MORTON GROVE, ILLINOIS 60053 </td> </tr> </table>		SERVICES	MATERIALS	Medium speed rotary shaft applications to 1800 FPM. For hot or cold water, cold oils, mild caustics or acids and similar services. Temperatures: to 500° F. pH range: 6-8.	Square braided from high quality Canadian asbestos yarn, impregnated with a high flash point lubricant and graphite.	<table border="1" style="width: 100%;"> <tr> <td style="width: 50%;">SIZE</td> <td style="width: 50%;">LENGTH</td> </tr> <tr> <td style="height: 40px;"></td> <td style="height: 40px;"></td> </tr> </table>	SIZE	LENGTH			<table border="1" style="width: 100%;"> <tr> <td style="width: 100%;">FORMULA</td> </tr> <tr> <td style="height: 40px;"></td> </tr> </table>	FORMULA		CRANE PACKING COMPANY MORTON GROVE, ILLINOIS 60053	
SERVICES	MATERIALS														
Medium speed rotary shaft applications to 1800 FPM. For hot or cold water, cold oils, mild caustics or acids and similar services. Temperatures: to 500° F. pH range: 6-8.	Square braided from high quality Canadian asbestos yarn, impregnated with a high flash point lubricant and graphite.														
<table border="1" style="width: 100%;"> <tr> <td style="width: 50%;">SIZE</td> <td style="width: 50%;">LENGTH</td> </tr> <tr> <td style="height: 40px;"></td> <td style="height: 40px;"></td> </tr> </table>	SIZE	LENGTH			<table border="1" style="width: 100%;"> <tr> <td style="width: 100%;">FORMULA</td> </tr> <tr> <td style="height: 40px;"></td> </tr> </table>	FORMULA									
SIZE	LENGTH														
FORMULA															
CRANE PACKING COMPANY MORTON GROVE, ILLINOIS 60053															

0076

6-95

Armstrong
ACCOBEST®
AS-474

MADE UNDER U.S. PATENT 2,759,811

AS-474 is the only better-saturated control swell asbestos product.
 It offers improved torque retention and sealability at higher
 temperatures in gasoline and oil environments.

Gauge | Sq. Yds.

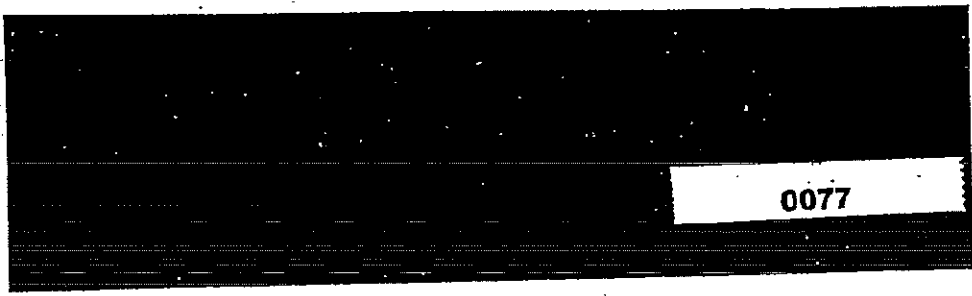
LA 474 474

Armstrong
ACCOBEST® AS-8073
CONTROLLED HIGH-SWELL
GASKETING MATERIAL

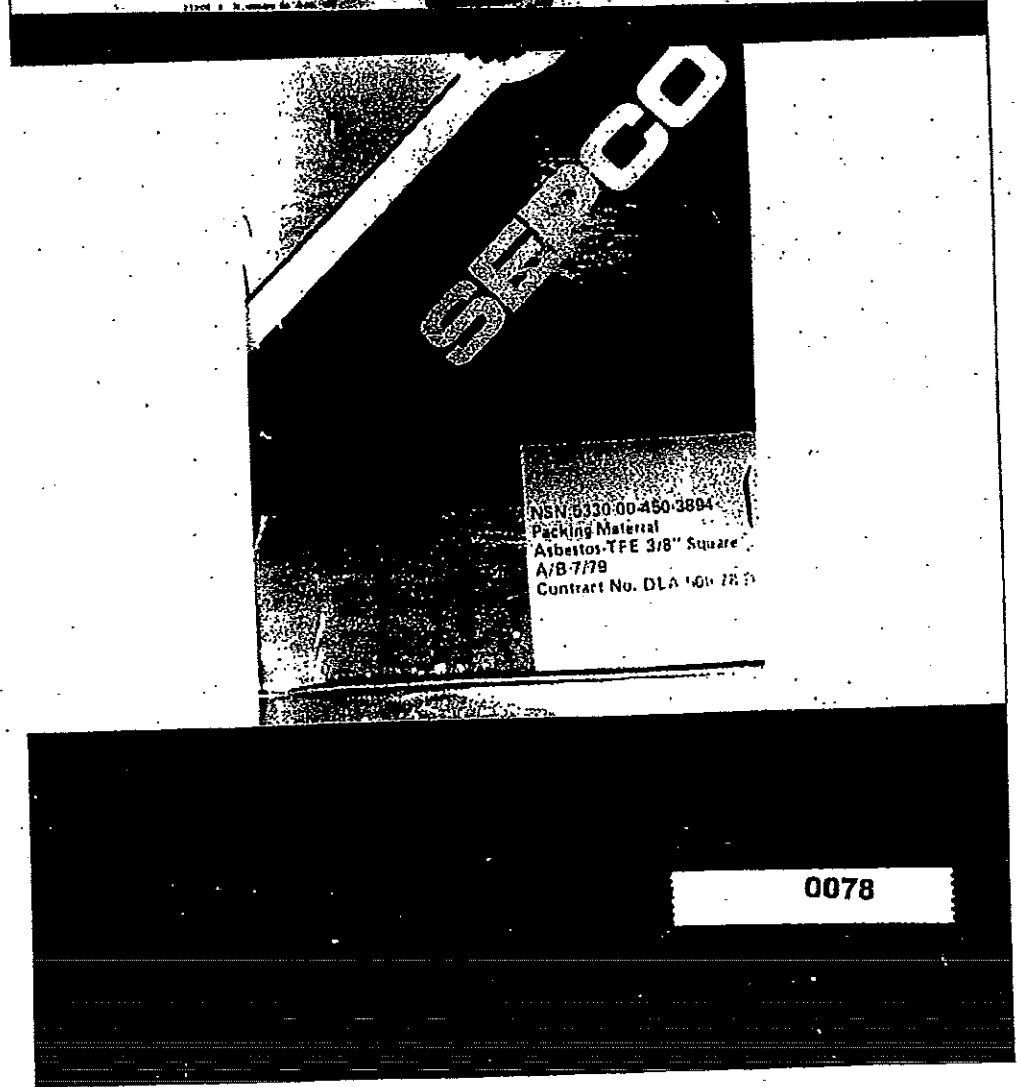
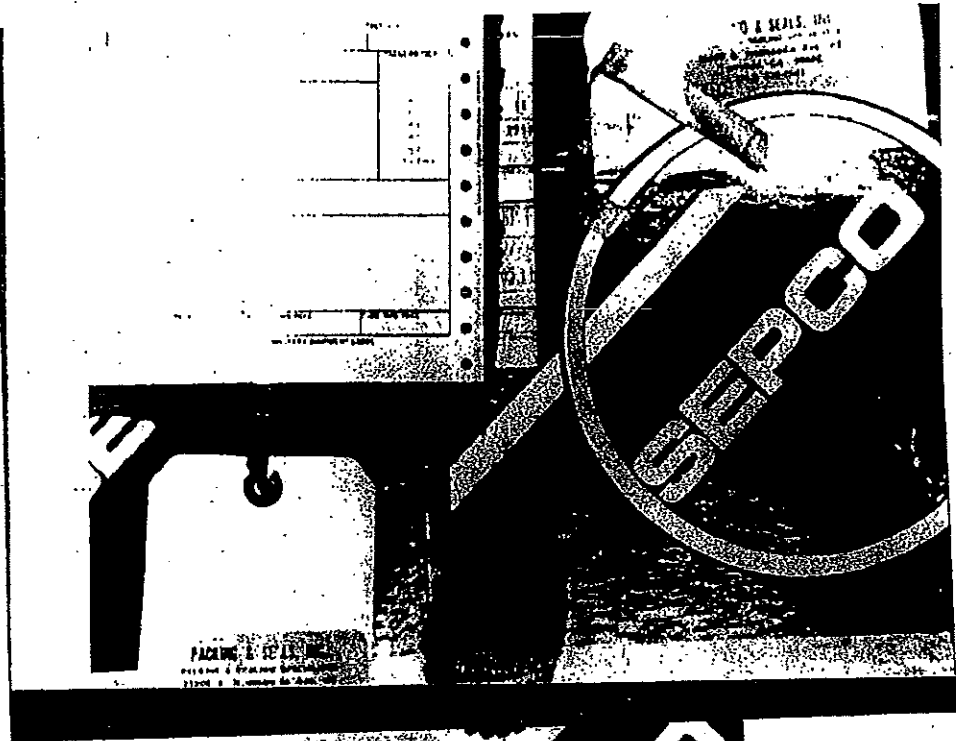
SBR rubber latex combined with asbestos fiber
 in a high density material for service in
 high-temperature, high-pressure applications.
 Recommended where a "swelling" gasket is required.

Gauge | Sq. Yds.

LA 8073 807



6-96



6-97

DURAMETALLIC CORPORATION

PRINTED IN U.S.A.

2104 FACTORY STREET
KALAMAZOO, MICHIGAN 49001

ENGINEERED SEALING SYSTEMS

FACTORY ORDER

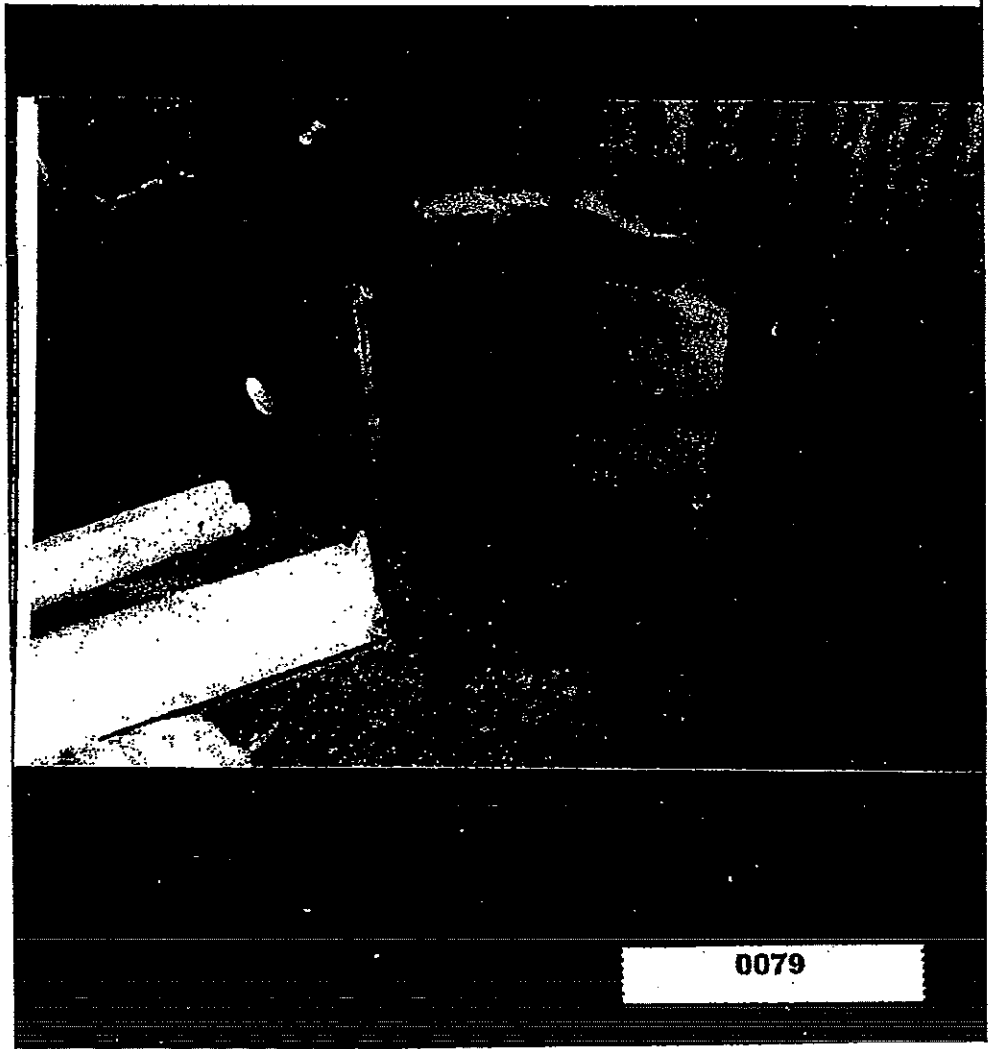
PURCHASE ORDER NO.

S
I
P
T
O

Form No. A13.9

RETURN POSTAGE GUARANTEED

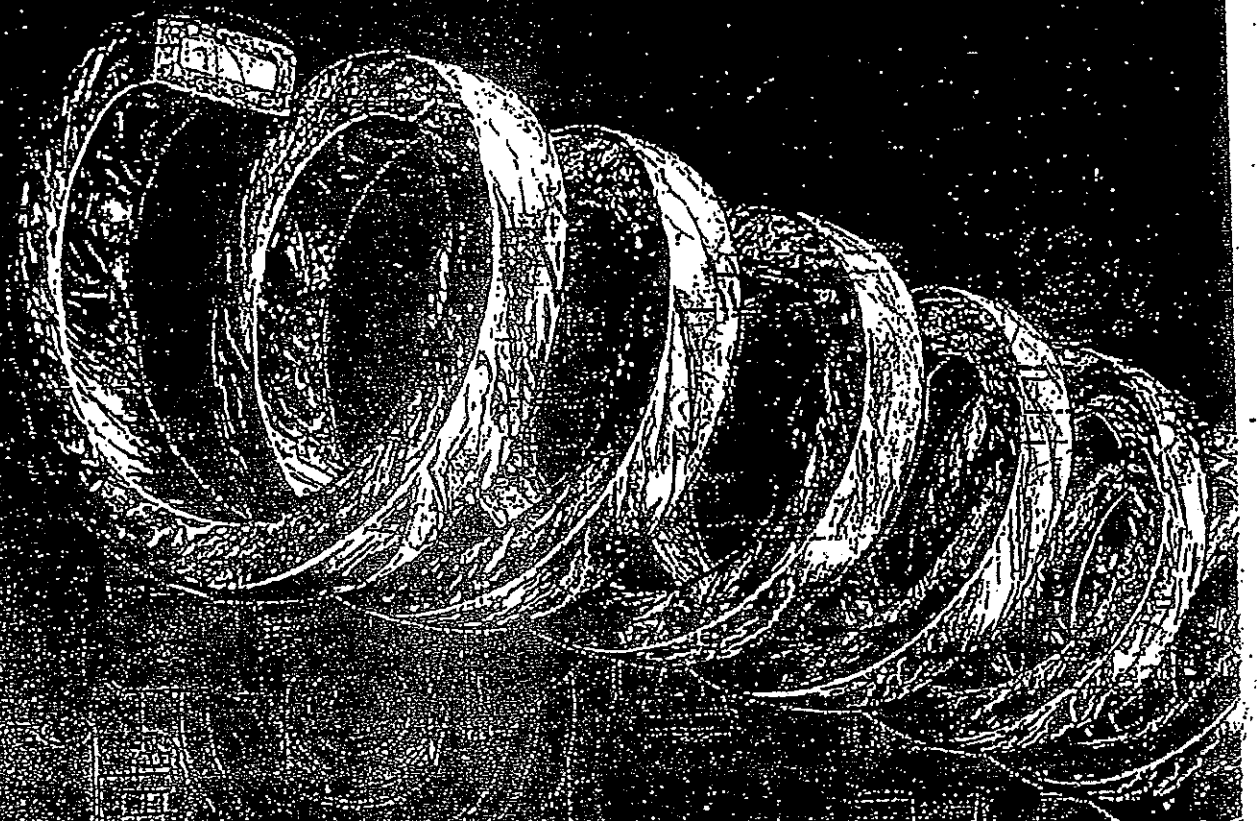
212 3 1988 602881



0079

6-98

Durametallic Packings



DURAMETALLIC



CORPORATION

KALAMAZOO

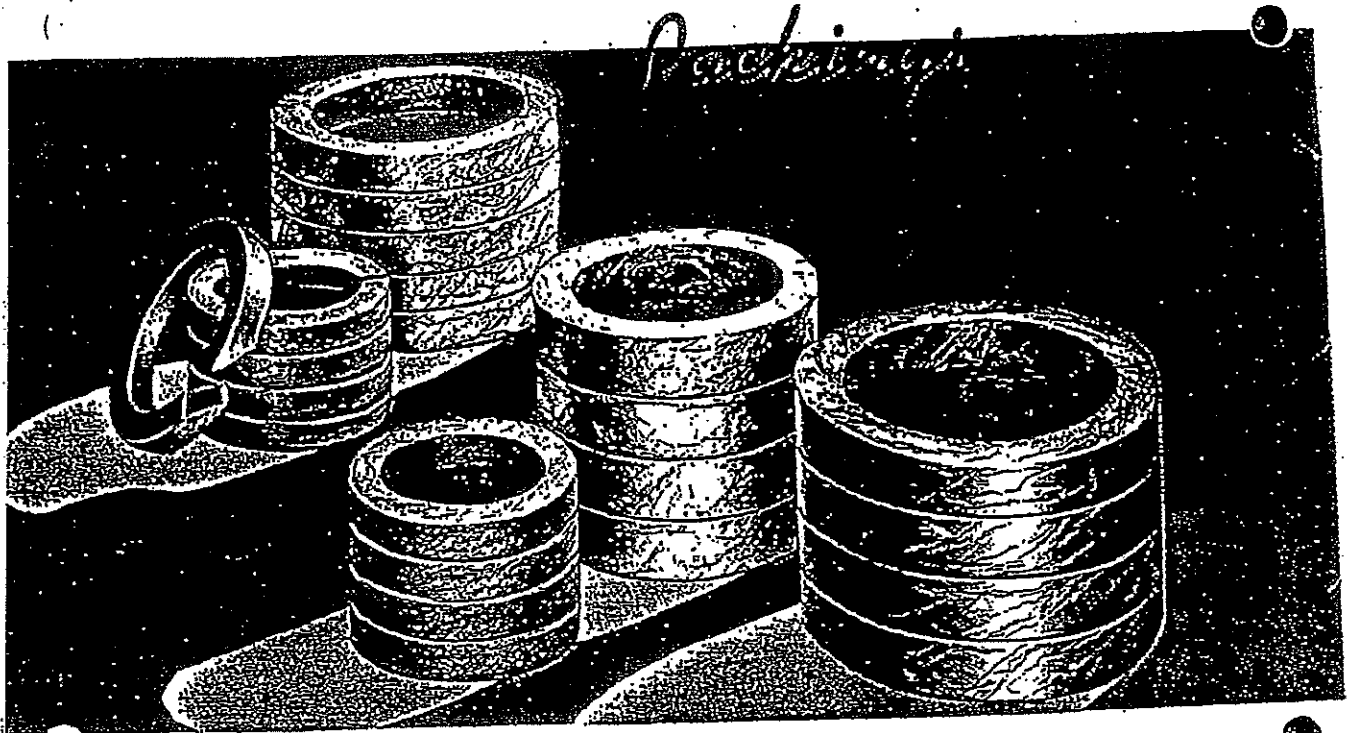
MICHIGAN

0079A

11 11

6-99

DURAMETALLIC



"THE PACKING THAT IS ENGINEERED FOR THE JOB."



DURAMETALLIC CORPORATION is the originator of a twisting procedure which wraps specially treated, lubricated, and crinkled foil sheets upon themselves to render packing products which are anti-frictional, self-lubricated, and resilient. They are similar to a bearing or akin to a ground joint.

DURAMETALLIC FOIL PACKINGS were introduced to industry better than a half century ago. This concept in the field of packing received immediate acceptance and became prevalent with the process industries of our nation. Our best testimonial is its continuous popularity and use in meeting present day stuffing-box requirements. Being dedicated to producing ever better sealing products, Durametallic packings have been improved whenever possible with the use of new materials and techniques as they become available, to meet the greater demand occasioned by higher operating speeds, pressures and temperatures.

DURAMETALLIC PACKINGS are available in spiral and die molded ring form. Various types and styles are illustrated and described in the following pages. Specification tables listing sizes, weights and lengths are provided on the respective pages.

DURAMETALLIC SEALING products are sold and serviced throughout the world by experienced field representatives. The Corporate Headquarters and Manufacturing Center are located in Kalamazoo, Michigan.

U.S.A. Branch manufacturing plants and subsidiaries are located in Los Angeles; Baton Rouge; Charlotte, N.C.; Houston; Morris Plains, N.J.; Canada; Brazil; Mexico; Europe and India. Stocks of Durametallic packings are maintained in San Francisco; Chicago; Tulsa; Appleton, Wis.; Ponce, Puerto Rico; Port Neches and Freeport, Texas. Sales offices are located near most principal cities.

0079B

b-100



Packings

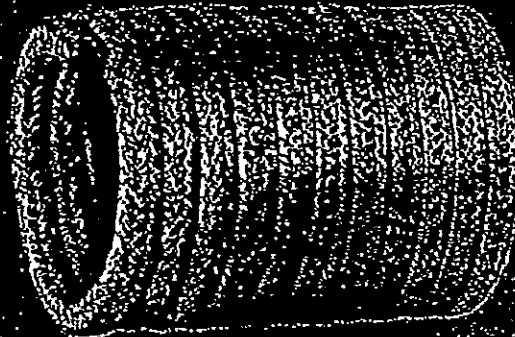
BRAIDED GRAPHITE FILAMENT PACKING

OUTSTANDING THERMAL CONDUCTIVITY

DESCRIPTION

TYPE GL

ite filament yarn with interlock-
aid, square in cross section.
land pressure is needed. After
t break-in period, the packing
es bearing like. Unlike many
gs, simply add packing rings
ntain full stuffing-box volume.
cking rings should not be del-
l by excessive gland pressure.
raphite filament is slightly im-
ted with TFE dispersion.



STYLE GL-100

olded rings of GL. Pre-formed
duct rings and/or ring sets. Sets
rapped and labeled for storage
y for installation when needed.

RECOMMENDED USES

TEMPERATURES: STABLE IN AIR UP TO 650° F.
IN ABSENCE OF AN OXIDIZING AGENT,
UP TO 1200° F.

Inert to most chemicals except strong oxidizing agents such as liquid oxygen, fuming nitric acid, hot fuming sulphuric acid and dichromates. Handles chlorinated hydrocarbons, plastics, fatty-acid, tars, inks and resins.

HOW TO ORDER

AL: When special spools or lengths
required specify type, length, size
of GL spools indicated on the spool

Style, size, quantity, delivery date,
and other special requirements should be
indicated on the order form.

Individual pieces should be
labeled with the name of the
customer and the quantity
required.

SPECIFICATIONS

Type GL Available in #1 and #5 Spools.

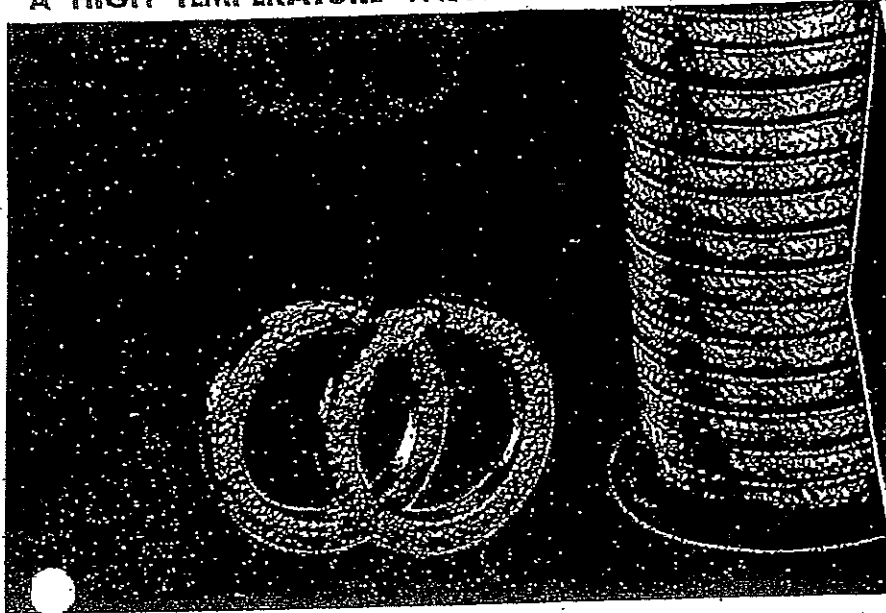
Size Packing Space	Approximate Feet Per #1 Spool	Approximate Feet Per #5 Spool
1/4"	30'	150'
5/16"	20'	100'
3/8"	14'	70'
7/16"	10'	50'
1/2"	8'	40'
9/16"	6 1/2'	33'
5/8"	5'	25'
11/16"	NA	20'
3/4"	NA	18'
7/8"	NA	13'
1"	NA	10'

NA indicates — not available in these sizes

0079C

6-101

Packings
**INCONEL WIRE INSERTED
 BRAIDED ASBESTOS PACKING**
 A HIGH TEMPERATURE VALVE STEM PACKING



DESCRIPTION

TYPE AW

High quality braided asbestos jacket over a corrosion resistant core with inserted Inconel wire renders a spiral packing with strong tensile strength which requires little gland adjustment. The graphite lubricant provides an antifrictional packing for easy movement of the valve stem. A corrosion inhibitor protects the stem from damage after hydrostatic test until placed in service.

STYLE AW-100

Die-molded rings of type AW. Pre-formed individual rings and/or ring sets are available to fit the stuffing-boxes of your equipment. Sets are wrapped and labeled for storage — ready for installation when needed.

RECOMMENDED USES

TEMPERATURES UP TO 1200° F.

For valve stem and expansion joints.

Excellent for handling steam, air, water, hot gases and oils.

SPECIFICATIONS

Type AW Available in #1 and #5 Spools.

Size Packing Space	Approximate Feet Per #1 Spool	Approximate Feet Per #5 Spool
1/8"	66'	NA
3/16"	28'	NA
1/4"	20'	100'
5/16"	13'	65'
3/8"	9'	45'
1/2"	6'	30'
5/8"	NA	21'
3/4"	NA	15'
7/8"	NA	12'
1"	NA	10'

NA indicates — not available in those sizes

HOW TO ORDER

Specify when ordering the size and quantity of spools and the size of the stuffing boxes.

Unless it is specified, the packing is for use in the stuffing boxes of your equipment.

When ordering, refer to the packing space of your stuffing box and the number of stems to be packed.

0079E

6-103

Carey

TEN POUNDS
ASBESTOS PACKING

Form 16
1000-3-45

THE PHILIP CAREY
LOCKLAND, CINCINNATI

GAF CONNECTITE

0080

6-104

MECHANICAL PACKING

PACKING
Chesterton
SERVICE

"64"

DIAGONAL HIGH PRESSURE PACKING

SIZE

WEIGHT

MANUFACTURED BY
A. W. CHESTERTON CO.
BOSTON, MASS.

MECHANICAL

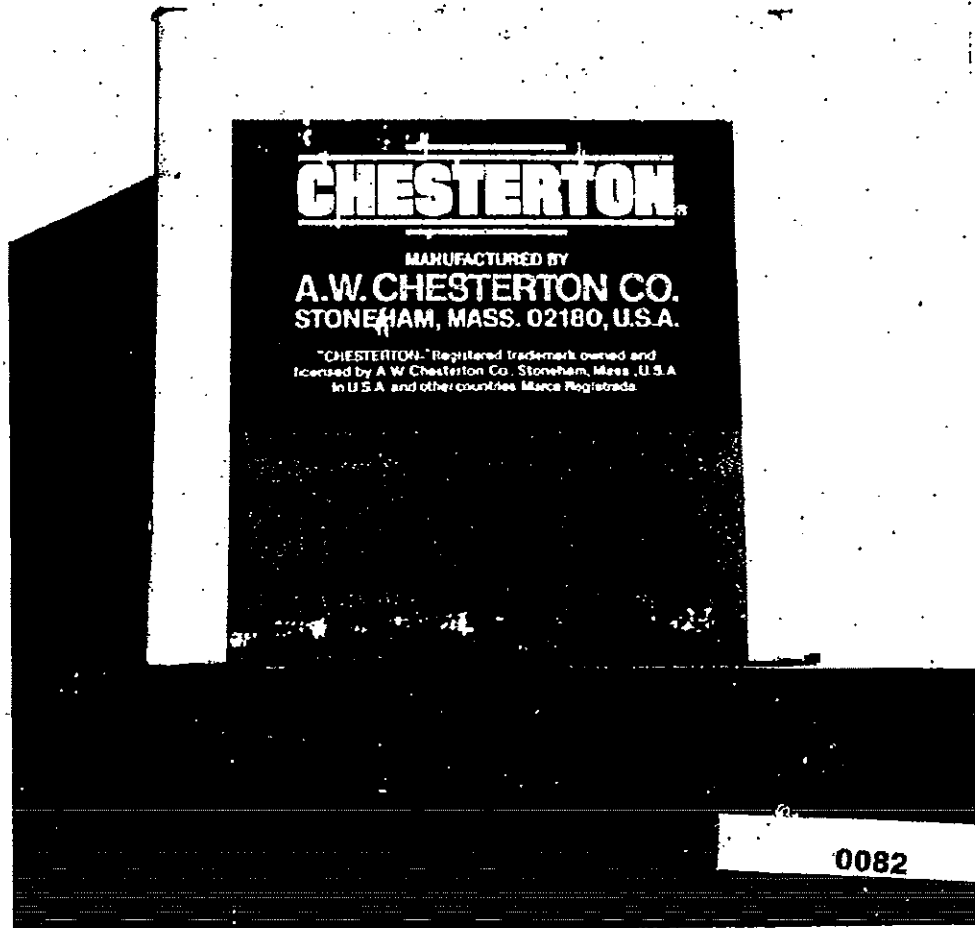
CHESTERTON

STYLE 326 CHES-LON PACKING

"HIGH SPEED WHITE ASBESTOS WHICH RESISTS CAUSTICS LIKE BLUE"
LOW FRICTION - HIGH SPEED - CHEMICALLY INERT

0081

6-105



6-106

SERVICE

240 -- Same as For Style 230 above

APPROXIMATE DATA		
Weight per square inch, 1/4 inch — .0043 lb.		
Thickness	Length per Roll	Weight per Roll
3/16"	50 yds.	310 lbs.
1/4"	17 1/2 yds.	210 lbs.

METAL ARMED SIKER is manufactured into a hand woven asbestos cloth incorporating an insertion of fine brass wire twisted into each strand for reinforcement. This cloth is treated with a special white heat-resistant which has adhesive qualities.

Series 240 is fundamentally intended for operation against high pressure steam and superheat oil installations requiring a gasket with a narrow flange, or where considerable vibration is in evidence. The reinforced wire insertion renders it especially serviceable on steam cylinder heads having numerous bolt holes disproportionate to the size of the flange. Width 40".



A. W. CHESTERTON CO.

America's Oldest Manufacturer of Mechanical Packings • Est. 1884

58

A. W. Chesterton Co.
Manufacturers of

**PARACHUTE PACKING
STYLE 600**

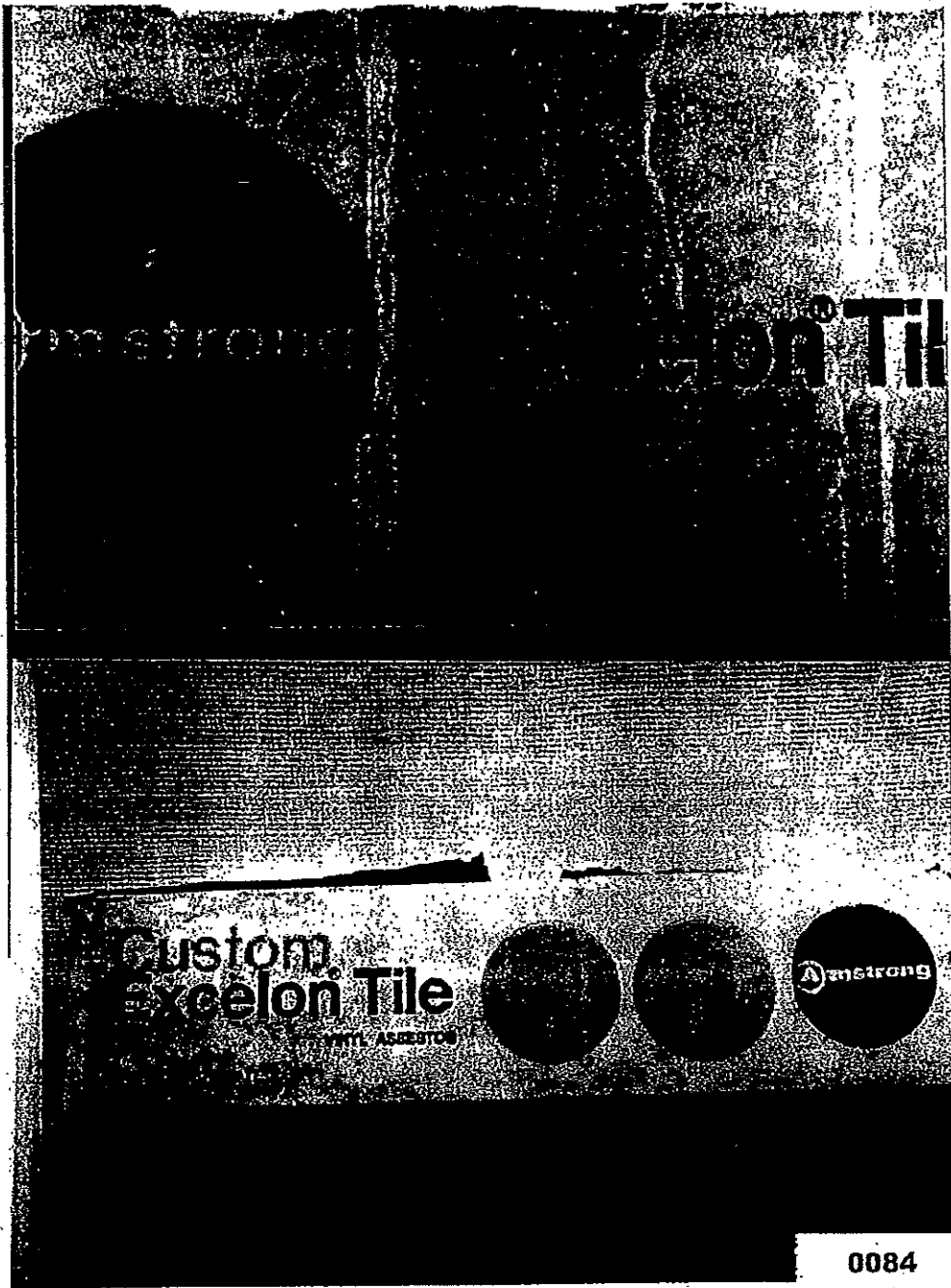
SIZE WT.

MECHANICAL PACKING

Gasket No. 1 is 3 in. W.

0083

6-107

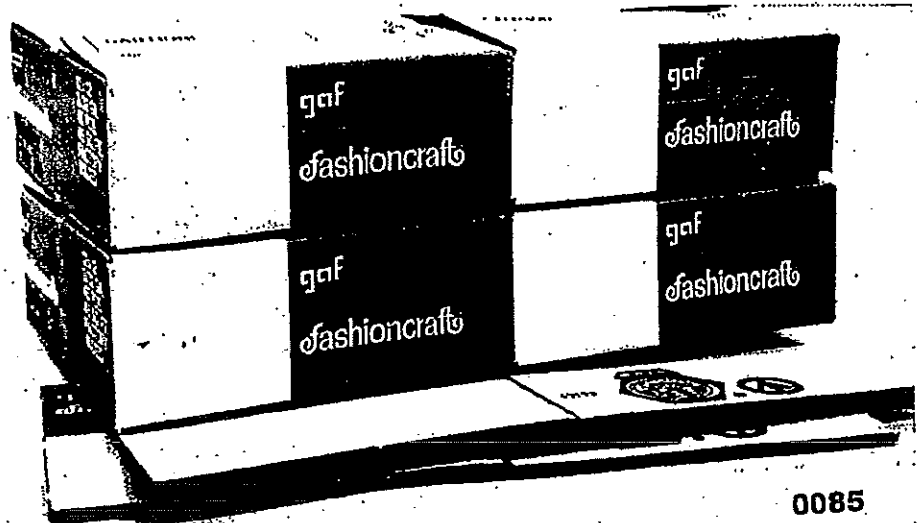


0084

6-108



gaf *Sure-Stik*TM
ADHESIVE-BACKED
VINYL ASBESTOS TILE



0085

6-109



ASBESTOS CEMENT BOARDS

NATIONAL GYPSUM COMPANY • BUFFALO, N. Y.

NO *Underwriters' Laboratories, Inc.*

LISTED.

ASBESTOS - CEMENT BOARDS

Contents not over 1,000 Sq. Ft. Issue No. AS-67

FIRE HAZARD CLASSIFICATION
(Based on 100 for untreated red oak)

FLAME SPREAD	0
FUEL CONTRIBUTED	0
SMOKE DEVELOPED	0

VOID

FORM 1336-B BK 3-72



COLOR-TEX

ASBESTOS-CEMENT FLAT SHEETS WITH A DURABLE
ACRYLIC FINISH ON A FINE TEXTURED SURFACE

0086

6-110

Congoleum-Nairn
FINE FLOORS

KEARNY, NEW JERSEY

VINYLBEST TILE
WITH FEATHERVEINING
THRU and THRU

Congoleum-Nairn
FINE FLOORS

PERSIAN TILE
VINYL FLOORING

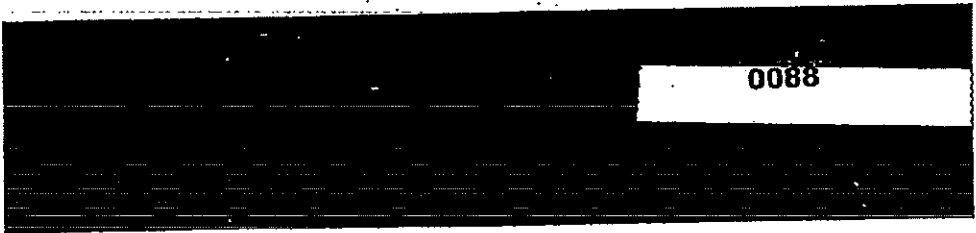
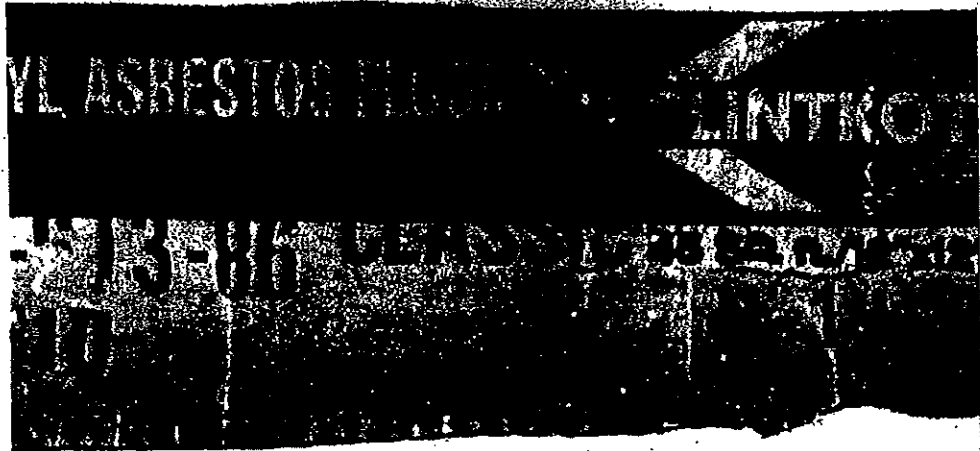
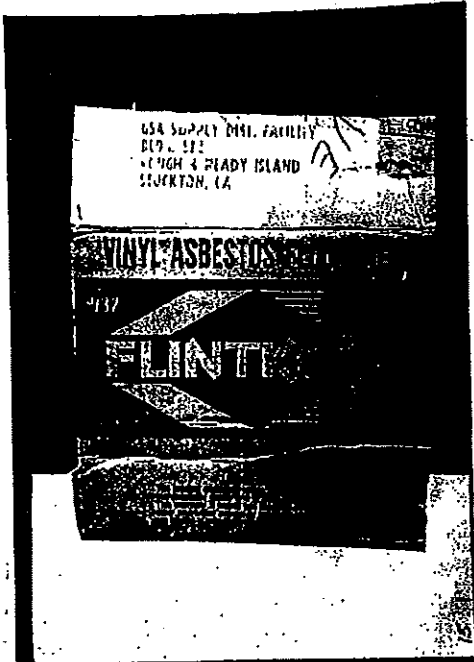
CAUTION: DO NOT ENROLL WHEN COLD

NAME	ADDRESS	CITY	STATE
NAME	ADDRESS	CITY	STATE


Congoleum-Nairn, Inc.
KEARNY, N. J.

0087

6-111



REINFORCED VINYL ASBESTOS FLOOR TILE



FLINTKOTE SIZE - 12" X 12" 27 SQ. FEET

THE FLINTKOTE COMPANY • NEW YORK 20, N.Y.



FLINTKOTE
S-CALF
peel-stick
REINFORCED VINYL TILE

0089

6-113



SKYKOTE #430 C FLINTWHITE

FIVE GALLONS

NEW YORK • LOS ANGELES • SAN FRANCISCO • PORTLAND

DECORALT®
HEAVY DUTY SEAL COAT

*A trademark of The Flintkote Company

USE: Heavy duty sealant used to seal all cracks and joints in masonry, concrete, and stone. It is highly resistant to weathering, acid, alkali, and salt.

For Humidious Surfaces: Use in areas where moisture is present. It is highly resistant to water and salt.

For Masonry Surfaces: Use in areas where masonry is present. It is highly resistant to weathering, acid, alkali, and salt.

Supplied in all 50 states, Canada, and Mexico.

See Flintkote Product literature and technical data for complete detailed application procedures.

REGISTERED TRADEMARK

KEEP CAN CLOSED WHEN NOT IN USE

CAUTION—KEEP FROM FREEZING

DIRECTIONS: This sealant is supplied in plastic containers. Remove cap and stir thoroughly to break lumps.

For brush application, use 1 part water to 1 part DECORALT. Apply two coats with about 1/8 inch brush.

For spray application, use 1 part water to 1 part DECORALT. See Flintkote literature for proper pressure and equipment. Apply without the addition of air.

Total coverage should be not less than one gallon per 150 sq. ft. on non-porous surfaces and 100 sq. ft. on porous surfaces.

Protect coating from rain until dry. Remove excess with wet brush. Excess material can be removed with lacquer solvent.

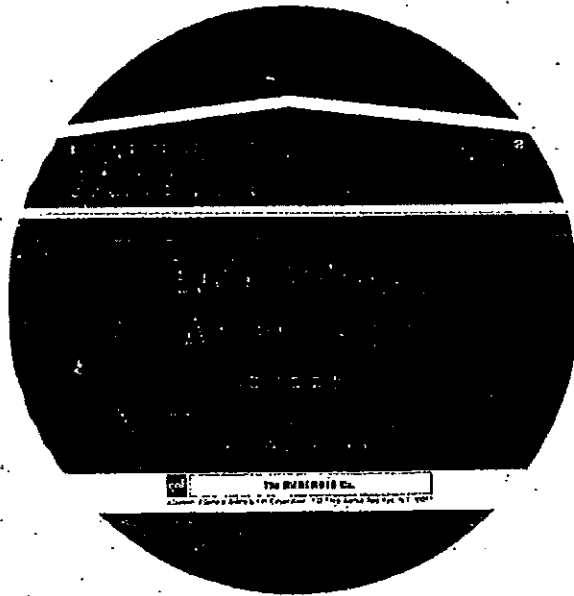
NOTICE: Our recommendations for the use of this product are based on experience and tests believed to be reliable. However, since the use of this product is beyond the control of the manufacturer, liability is expressly disclaimed in all territories where shipment is made.

THE FLINTKOTE COMPANY
Industrial Division
New York 20, N. Y.

DECORALT®
HEAVY DUTY SEAL COAT

0090

6-114



gaf

**RUBEROID®
WEATHER COAT
EMULSION**

CONTENTS: BLEND OF ASPHALT, WATER, BENTONITE CLAY,
AND ASBESTOS FIBER

CAUTION: KEEP FROM FREEZING

NET CONTENTS 5 GALLONS

GAF Corporation, Building Products Division, 140 West 51 Street, New York, N.Y. 10020

WEATHER COAT EMULSION

(Roofing Emulsion for Dead Level Roofs)

Waterproof Solutions for
CEMENTS and COATINGS
FOR BUILT-UP ROOF COVERINGS

DESCRIPTION

This emulsion is a blend of asphalt, water, bentonite clay, and asbestos fiber. It is used for waterproofing built-up roofs. It is applied in a thin layer over the roof covering. It is available in 5 gallon and 10 gallon containers.

0091

6-115



EAGLE-PICHER

STALASTIC

EP

THE EAGLE-PICHER COMPANY
CINCINNATI, OHIO
1940 1943

051420591

0092

6-116



0093

LAW OFFICES OF JERRY NEIL PAUL
LOGO SHEET

6-117