

TDS/ORS EQUIPMENT REPORT

REGION: FEMEST	UNIT NO.	TURBINE NO.	RATING	TECH EQUIP CODE	GEN CODE	GEN SERIAL #	SNIP DATE	COO DATE	FUEL CONT CODE	CYC CODE	MKT CODE	OPER OFFICE STAT
ARIZONA PUBLIC SERV												
CHOLLA	4	170X807	375 MW	J1 D8	4P4W	180X807	1977/01/01	1981/03/01	FO	F	1	2 433R
270T104	0	280T104	375 MW	J1 D8	4P4	280T104	1999/01/01	1991/01/01	FO	F	1	0 433R
FOUR CORNERS												
128904	1	8287058	175 MW	J1 D5	4A4	8287058	1962/01/01	1963/02/28	FO	F	1	2 433R
128951	2	8287099	175 MW	J1 D5	4A4	8287099	1962/01/01	1963/05/01	FO	F	1	2 433R
170X194	3	180X194	225 MW	J1 F11	4A4	180X194	1963/01/01	1964/04/02	FO	F	1	2 433R
170X339	4	180X339	755 MW	J1 H13	4A4W	180X339	1968/01/01	1969/05/22	FO	F	1	2 433R
170X340	4	180X340	0 MW	J1 K2	7K6W	180X340	1968/01/01	1969/05/22	FO	F	1	2 433R
170X351	5	180X351	755 MW	J1 H13	4A4W	180X351	1969/01/01	1970/04/06	FO	F	1	2 433R
170X352	5	180X352	0 MW	J1 K2	7K6W	180X352	1969/01/01	1970/04/06	FO	F	1	2 433R
PALO VERDE												
170X808	1	180X808	1359 MW	J1 N2R	7L4W	180X808	1978/01/01	1985/06/10	MU	N	1	2 433R
170X809	2	180X809	1359 MW	J1 N2R	7L4W	180X809	1980/01/01	1986/05/20	MU	N	1	2 433R
170X810	3	180X810	1359 MW	J1 N2R	7L4W	180X810	1981/01/01	1987/11/28	MU	N	1	2 433R
SAGUARO												
099666	1	6918148	100 MW	J1 C1	1A4	6918148	1954/01/01	1954/06/27	CO	F	1	2 433R
099698	2	6918178	100 MW	J1 C1	1A4	6918178	1954/01/01	1955/04/21	CO	F	1	2 433R
YUCCA POWER PLANT												
118321	1	8245875	75 MW	J1 D1	1A4	8245875	1958/01/01	1959/03/04	FO	F	1	2 433R
BASIN ELECTRIC POWER												
LARANIE RIVER												
170X842	2	180X842	570 MW	J1 G2	4J4W	180X842	1978/01/01	1981/05/01	FO	F	1	2 433R
170X843	1	180X843	570 MW	J1 G2	4J4W	180X843	1978/01/01	1980/02/19	FO	F	1	2 433R
270T107	3	280T107	570 MW	J1 G2	4J4W1	280T107	1980/01/01	1982/03/23	FO	F	1	2 433R
COLO SPRINGS D/UTIL												
NIXON												
170X743	1	180X743	200 MW	J1 D5	5A4	180X743	1976/01/01	1980/02/18	FO	F	1	2 433R

*Pf* EXHIBIT 4  
 FOR IDENTIFICATION  
 KARLA M. BARRON, CSR 2842

TDS/ORS EQUIPMENT REPORT

06/16/93

REGION: FEWEST													
TURBINE NO.	UNIT NO.	RATING	TECH CODE	EQUIP CODE	GEN CODE	GEN SERIAL #	SHIP DATE	COO DATE	FUEL CODE	CONT CODE	CYC CODE	MKT CODE	OPER OFFICE STAT CODE
COLORADO-UTE ELEC AS													
CRAIG													
170X612	2	411 MW	J1	D8	4J4W	180X612	1976/01/01	1979/09/05	FO	E2	F	1	2 433R
170X613	1	411 MW	J1	D8	4J4W	180X613	1977/01/01	1980/06/21	FO	E2	F	1	2 433R
170X829	3	411 MW	J1	D8	4J4W	180X829	1981/01/01	1984/08/15	FO	E2	F	1	2 433R
SOUTHWEST													
170X830	0	411 MW	J1	D8	4J4	180X830	1999/01/01	1999/01/01	FO	E2	F	1	0 433R
GENEVA STEEL													
PROVO, UT													
056740	1	50 MW	J1	J1	0Y0	5660395	1942/01/01	1943/12/02	ZZ	Z	F	1	2 433R
IDAHO POWER COMPANY													
PIONEER 1													
170X803	0	511 MW	J1	G2	4J4	180X803	1999/01/01	1999/01/01	FO	E2	F	1	0 474R
INTERMOUNTAIN													
INTERMOUNTAIN PR PRJ													
270T150	1	820 MW	J1	S2	4J4W	280T150	1983/01/01	1986/02/27	FO	E2	F	1	2 433R
270T151	2	820 MW	J1	S2	4J4W	280T151	1984/01/01	1987/02/02	FO	E2	F	1	2 433R
KENNECOTT MINERAL CO													
CENTRAL, UT													
128918	4	75 MW	J1	D1	1A4	8287070	1959/04/01	1960/04/16				3	2 433R
LOS ANGELES-DEPT.													
HARBOR STEAM													
080966	3	75 MW	J1	J1	1S4	5727979	1948/01/01	1949/02/10	CO	MH	F	1	5 433R
RAYNES													
170X264	5	330 MW	J1	H18	1A4	180X264	1965/01/01	1966/08/12	CO	MH	F	1	2 433R
170X265	5	0 MW	J1	J4	1K6	180X265	1965/01/01	1966/08/12	CO	MH	F	1	2 433R

06/16/93

TDS/ORS EQUIPMENT REPORT

06/16/9

REGION: FEWEST													
TURBINE NO.	UNIT NO.	RATING	TECH CODE	EQUIP CODE	GEN CODE	GEN SERIAL #	SHIP DATE	COO DATE	FUEL CODE	CONT CODE	CYC CODE	MKT CODE	OPER OFFICE STAT CODE
170X266	6	330 MW	J1	H18	1A4	180X266	1966/01/01	1967/03/18	CO	MH	F	1	2 433R
170X267	6	0 MW	J1	J4	1K6	180X267	1966/01/01	1967/03/18	CO	MH	F	1	2 433R
SCATTERGOOD													
115008	1	156 MW	J1	F2	1B8	8090667	1957/01/01	1958/12/07	CO	MH	F	1	2 433R
115009	2	156 MW	J1	F2	1B8	8090668	1958/01/01	1959/07/01	CO	MH	F	1	2 433R
VALLEY													
101636	3	156 MW	J1	F2	1B8	6943814	1954/01/01	1955/11/04	CO	MH	F	1	2 433R
108819	4	156 MW	J1	F2	1B8	6943889	1955/01/01	1956/05/16	CO	MH	F	1	2 433R
MONTANA POWER COMPAN													
COLSTRIP													
170X539	1	333 MW	J1	D8	4P4W	180X539	1974/01/01	1975/09/23	FO	EH	F	1	2 433R
170X628	2	333 MW	J1	D8	4P4W	180X628	1975/01/01	1976/05/22	FO	EH	F	1	2 433R
FRANK BIRD													
087419	1	60 MW	J1	C1	1A4	6792028	1951/01/01	1951/11/04	CO	MH	F	1	5 433R
PACIFIC GAS & ELECTR													
CONTRA COSTA													
087403	1	100 MW	J1	C3	1A4		1950/01/01	1951/06/02	CO	MH	F	1	2 474R
087404	2	100 MW	J1	C3	1A4	6792013	1950/01/01	1951/07/12	CO	MH	F	1	2 474R
087405	3	100 MW	J1	C3	1A4	6792014	1951/01/01	1951/07/22	CO	MH	F	1	2 474R
093358	4	100 MW	J1	D2	1A4	8682940	1953/01/01	1953/06/10	CO	MH	F	1	2 474R
HUNTERS POINT													
056627	2	100 MW	J1	C3	1A4	5461354	1948/01/01	1948/11/24	CO	MH	F	1	2 474R
080961	3	100 MW	J1	C1	1A4	5727973	1948/01/01	1949/01/12	CO	MH	F	1	2 474R
108882	4	156 MW	J1	F2	1B8	8090642	1957/01/01	1958/08/20	CO	MH	F	1	2 474R
KERN													
056625	1	60 MW	J1	J1	0Y0		1948/01/01	1948/05/05	CO	MH	F	1	2 474R
063658	2	80 MW	J1	J1	1S4	6750664	1949/01/01	1950/01/13	CO	MH	F	1	2 474R
HORRO BAY													

TDS/ORS EQUIPMENT REPORT

06/16/91

REGION: FEWEST

TURBINE NO.	UNIT NO.	RATING	TECH CODE	EQUIP CODE	GEN CODE	GEN SERIAL #	SHIP DATE	COD DATE	FUEL CODE	CONT CODE	CYC CODE	MKT CODE	OPER STAT	OFFICE CODE
<b>MOSS LANDING</b>														
087421	1	100 MW	J1	C3	1A4	6792029	1949/01/01	1950/05/04	CO	MH	F	1	2	474R
087430	2	100 MW	J1	C3	1A4	6792038	1950/01/01	1950/12/08	CO	MH	F	1	2	474R
093356	4	100 MW	J1	D2	1A4	6862938	1952/01/01	1952/10/05	CO	MH	F	1	2	474R
093357	5	100 MW	J1	D2	1A4	6862939	1952/01/01	1952/11/28	CO	MH	F	1	2	474R
170X256	6	702 MW	J1	H11	4A4W	180X256	1965/01/01	1967/10/16	CO	MH	F	1	2	474R
170X257	6	0 KW	J1	M1	8K6W	180X257	1965/01/01	1967/10/16	CO	MH	F	1	2	474R
170X258	7	702 MW	J1	H11	4A4W	180X258	1967/01/01	1968/04/23	CO	MH	F	1	2	474R
170X259	7	0 KW	J1	M1	8K6W	180X259	1967/01/01	1968/04/23	CO	MH	F	1	2	474R
<b>OAKLAND</b>														
033833	4	40 MW	J1	J1	0Y0		1938/01/17	1939/01/17				0	3	474R
<b>PITTSBURG</b>														
099670	1	125 MW	J1	F2	1B8	6918152	1953/01/01	1954/05/25	CO	MH	F	1	2	474R
099671	2	125 MW	J1	F2	1B8	6918153	1953/01/01	1954/07/04	CO	MH	F	1	2	474R
099672	3	125 MW	J1	F2	1B8	6918154	1953/01/01	1954/10/25	CO	MH	F	1	2	474R
099673	4	125 MW	J1	F2	1B8	6918155	1953/01/01	1954/12/10	CO	MH	F	1	2	474R
118389	6	311 MW	J1	DP1	1A8	8287043	1960/01/01	1961/03/16	CO	MH	F	1	2	474R
118390	6	0 MW	J1	DS1	1A8	8287044	1960/01/01	1961/03/16	CO	MH	F	1	2	474R
<b>PACIFIC P&amp;L</b>														
<b>JIM BRIDGER</b>														
170X496	1	509 MW	J1	G2	4A4W	180X496	1973/01/01	1974/08/06	FO	EH	F	1	2	433R
170X547	2	509 MW	J1	G2	4A4W	180X547	1974/01/01	1975/07/10	FO	EH	F	1	2	433R
170X548	3	509 MW	J1	G2	4A4W	180X548	1975/01/01	1976/06/10	FO	EH	F	1	2	433R
170X752	4	509 MW	J1	G2	4A4W	180X752	1976/01/01	1979/08/31	FO	EH	F	1	2	433R
<b>JOHNSTON</b>														
108893	3	220 MW	J1	D5	2A4	8090653	1963/01/01	1964/06/23	FO	MH	F	1	2	433R
108895	1	100 MW	J1	D3	1A4	8090655	1958/01/01	1958/10/28	FO	MH	F	1	2	433R
108896	2	100 MW	J1	D3	1A4	8090656	1960/01/01	1960/10/17	FO	MH	F	1	2	433R
170X396	4	330 MW	J1	D8	4A4W	180X396	1970/01/01	1972/03/08	FO	MH	F	1	2	433R
<b>WYODAK</b>														
170X672	1	332 MW	J1	D8H	4P4W	180X672	1975/01/01	1978/06/08	FO	E2	F	1	2	433R

TDS/ORS EQUIPMENT REPORT

06/16/91

REGION: FEWEST

TURBINE NO.	UNIT NO.	RATING	TECH CODE	EQUIP CODE	GEN CODE	GEN SERIAL #	SHIP DATE	COD DATE	FUEL CODE	CONT CODE	CYC CODE	MKT CODE	OPER STAT	OFFICE CODE
170X760	2	332 MW	J1	DH	4P4	180X760	1999/01/01	1999/01/01	FO	E2	F	1	0	433R
<b>PORTLAND G.E.</b>														
<b>BOMAN MUC1</b>														
170X707	0	1309 MW	J1	UNK		180X707	1978/01/01					1	A	474R
<b>TROJAN</b>														
170X500	1	1178 MW	J1	H2R	7R4W	180X500	1972/01/01	1975/12/22	MU	EH	H	1	2	474R
<b>PUBLIC SER CO N.M.</b>														
<b>MEXICO 1</b>														
270T109	0	500 MW	J1	G2	4A4	280T109	1999/01/01	1999/01/01	FO	E2	F	1	0	433R
<b>SAN JUAN</b>														
170X650	1	347 MW	J1	D8	4A4W	180X650	1976/01/01	1976/12/01	FO	EH	F	1	2	433R
170X763	3	517 MW	J1	G2	4A4W	180X763	1976/01/01	1979/11/18	FO	E2	F	1	1	433R
170X764	4	517 MW	J1	G2	4A4W	180X764	1978/01/01	1982/03/09	FO	E2	F	1	2	433R
<b>UNKNOWN</b>														
270T108	0	500 MW	J1	G2	4A4		1999/01/01	1999/01/01	FO	E2	F	1	0	433R
<b>PUBLIC SERVICE COLOR</b>														
<b>ARAPAHOE, CO</b>														
101604	4	100 MW	J1	G1	1A4	6918184	1955/01/01	1955/08/22	FO	MH	F	1	2	433R
<b>CHEROKEE, CO</b>														
108864	1	100 MW	J1	D1	1A4	8090624	1956/01/01	1957/08/11	FO	MH	F	1	2	433R
128911	3	150 MW	J1	D5	4A4	8287063	1961/01/01	1962/04/28	FO	MH	F	1	2	433R
170X331	4	350 MW	J1	G2	4A4W	180X331	1967/01/01	1968/11/05	FO	MH	F	1	2	433R
<b>FORT ST VRAIN</b>														
170X380	1	336 MW	J1	D8D	4A4W	180X380	1969/01/01	1976/12/11	MU	EH	H	1	5	433R
<b>PAWNEE</b>														
170X742	1	508 MW	J1	G2	4A4W	180X742	1976/01/01	1981/10/28	FO	E2	F	1	2	433R

TDS/ORS EQUIPMENT REPORT

06/16/93

REGION: FEWEST

TURBINE NO.	UNIT NO.	RATING	TECH CODE	EQUIP CODE	GEN CODE	GEN SERIAL #	SHIP DATE	COB DATE	FUEL CODE	CONT CODE	CYC CODE	MKT CODE	OPER STAT	OFFICE CODE
031044	1	44 MW	J1	J1	OY0	4098973		1929/09/19				1	5	474R
032332	2	44 MW	J1	J1	OY0	5202011		1930/04/12				1	5	474R
<b>SALT RIVER PROJECT</b>														
<b>AGUA FRIA</b>														
108888	2	100 MW	J1	D1	1A4	8090648	1956/01/01	1957/03/01	HA	MH	F	1	2	433R
108889	1	100 MW	J1	D1	1A4	8090649	1957/01/01	1957/11/15	HA	MH	F	1	2	433R
128948	3	165 MW	J1	D5	1A4	8287096	1960/01/01	1961/03/02	HA	MH	F	1	2	433R
<b>CORONADO</b>														
170X797	1	395 MW	J1	G2	4P4W	180X797	1976/01/01	1979/07/21	FO	E2	F	1	2	433R
170X798	2	395 MW	J1	G2	4P4W	180X798	1979/01/01	1980/08/02	FO	E2	F	1	2	433R
2701165	3	417 MW	J1	G2	4P4	2801165	1988/09/01		FO	E2	F	1	4	433R
<b>KYRENE</b>														
093375	0	30 MW	J1	19	KY1	6862957	1951/01/01	1951/01/01	HA	Z	F	1	5	433R
099674	2	66 MW	J1	C1	1A4	6918156	1954/01/01	1954/05/11	HA	MH	F	1	2	433R
<b>NAVAJO</b>														
170X472	1	750 MW	J1	G30	4G4W	180X472	1973/01/01	1974/02/01	FO	EM	F	1	2	433R
170X473	2	750 MW	J1	G30	4G4W	180X473	1974/01/01	1974/12/02	FO	EM	F	1	2	433R
170X520	3	750 MW	J1	G30	4G4W	180X520	1974/01/01	1975/11/29	FO	EM	F	1	2	433R
<b>SAN DIEGO G&amp;E CO.</b>														
<b>CAL STA B 21</b>														
047346	0	35 MW	J1	21	1	5461317	1942/01/01	1942/01/01	FO	Z	F	1	3	474R
<b>ENCINA</b>														
099686	1	100 MW	J1	D2	1A4	6918168	1954/01/01	1954/11/13	CO	MH	F	1	2	474R
108817	2	100 MW	J1	D1	1A4	6943887	1955/01/01	1956/06/08	CO	MH	F	1	2	474R
115011	3	100 MW	J1	D1	1A4	8090670	1957/01/01	1958/07/23	CO	MH	F	1	2	474R
<b>SILVER GATE</b>														
080932	2	60 MW	J1	C1	1A4	5727948	1947/01/01	1948/03/10	DA	MH	F	1	2	474R
083644	3	50 MW	J1	C1	1A4	6750652	1949/01/01	1950/08/17	DA	MH	F	1	2	474R
093319	4	50 MW	J1	C1	1A4	6862900	1951/01/01	1952/08/28	DA	MH	F	1	2	474R

TDS/ORS EQUIPMENT REPORT

06/16/93

REGION: FEWEST

TURBINE NO.	UNIT NO.	RATING	TECH CODE	EQUIP CODE	GEN CODE	GEN SERIAL #	SHIP DATE	COB DATE	FUEL CODE	CONT CODE	CYC CODE	MKT CODE	OPER STAT	OFFICE CODE
118334	1	137 MW	J1	D3	1B6	8245888	1959/01/01	1960/05/20	CO	MH	F	1	2	474R
170X219	3	211 MW	J1	D6	4A4	180X219	1963/01/01	1964/07/30	CO	MH	F	1	2	474R
<b>SOUTHERN CALIFORNIA</b>														
<b>VALAMITOS</b>														
108854	1	156 MW	J1	F2	1B8	8090616	1956/01/01	1956/06/28	CO	MH	F	1	2	474R
115003	2	156 MW	J1	F2	1B8	8090662	1956/01/01	1957/01/08	CO	MH	F	1	2	474R
170X108	3	310 MW	J1	H12	1A4	180X108	1961/01/01	1961/09/29	CO	MH	F	1	2	474R
170X109	3	0 MW	J1	J3	1K4	180X109	1961/01/01	1961/09/29	CO	MH	F	1	2	474R
170X120	4	310 MW	J1	H12	1A4	180X120	1961/01/01	1962/04/01	CO	MH	F	1	2	474R
170X121	4	0 MW	J1	J3	1K4	180X121	1961/01/01	1962/04/01	CO	MH	F	1	2	474R
<b>CAL HIGHGROVE 1</b>														
093381	0	30 MW	J1	19	2	6862963	1951/01/01	1951/01/01	FO	Z	F	1	5	474R
093382	0	30 MW	J1	19	1	6862964	1951/01/01	1951/01/01	FO	Z	F	1	5	474R
099668	0	40 MW	J1	20	3	6918150	1952/01/01	1952/01/01	FO	Z	F	1	5	474R
<b>COOL WATER</b>														
118387	1	64 MW	J1	D1	1A4	8287041	1960/01/01	1961/05/14	CO	MH	F	1	2	474R
<b>ELSEGUNDO</b>														
108823	1	156 MW	J1	F2	1B8	6978262	1954/01/01	1955/05/01	CO	MH	F	1	2	474R
108849	2	156 MW	J1	F2	1B8	6978293	1955/01/01	1956/04/26	CO	MH	F	1	2	474R
170X222	3	325 MW	J1	H12	1A4	180X222	1963/01/01	1964/04/27	CO	MH	F	1	2	474R
170X223	3	0 MW	J1	J3	1K4	180X223	1963/01/01	1964/04/27	CO	MH	F	1	2	474R
170X224	4	325 MW	J1	H17	1A4	180X224	1964/01/01	1964/12/27	CO	MH	F	1	2	474R
170X225	4	0 MW	J1	J3	1K4	180X225	1964/01/01	1964/12/27	CO	MH	F	1	2	474R
<b>LETTIWAHA</b>														
099643	1	125 MW	J1	F2	1B6	6918125	1952/01/01	1953/06/13	CO	MH	F	1	2	474R
099644	2	125 MW	J1	F2	1B6	6881208	1952/01/01	1953/10/31	CO	MH	F	1	2	474R
170X172	3	310 MW	J1	H12	1A4	180X172	1962/01/01	1963/03/01	CO	MH	F	1	2	474R
170X173	3	0 MW	J1	J3	1K4	180X173	1962/01/01	1963/03/01	CO	MH	F	1	2	474R

TDS/ORS EQUIPMENT REPORT

06/16

#: FEWEST

TURBINE NO.	UNIT NO.	RATING	TECH CODE	EQUIP CODE	GEN CODE	GEN SERIAL #	SHIP DATE	COD DATE	FUEL CODE	CONT CODE	CYC CODE	MKT CODE	OPER STAT	OFF CODE
115049	1	200 MW	J1	H3A	1A4	8245804	1957/01/01	1958/05/01	CO	MH	F	1	2	474
115050	2	200 MW	J1	H3A	1A4	8245805	1957/01/01	1958/10/02	CO	MH	F	1	2	474
118301	1	0 MW	J1	J3	1K4	8245854	1957/01/01	1958/05/01	CO	MH	F	1	2	474
118302	2	0 MW	J1	J3	1K4	8245855	1957/01/01	1958/10/02	CO	MH	F	1	2	474
128908	3	210 MW	J1	H12	1A4	8287060	1960/01/01	1960/10/26	CO	MH	F	1	2	474
128909	3	0 MW	J1	J3	1K4	8287061	1960/01/01	1960/10/26	CO	MH	F	1	2	474
LONG BEACH														
030043	9	66 MW	J1	J1	0Y0	4097057	1925/06/01	1926/07/11	DO			1	2	474
031021	10	104 MW	J1	L1	0Y0			1928/06/18				1	3	474
031022	11	104 MW	J1	L1	0Y0	4098902	1929/02/23	1930/02/23				0	3	474
056626	8	80 MW	J1	J1	1S4		1942/09/01	1943/10/13	DO			1	2	474
MANDALAY														
118338	1	200 MW	J1	H3A	1A4	8245892	1958/01/01	1959/02/17	CO	MH	F	1	2	474
118339	1	0 MW	J1	J3	1K4	8245893	1958/01/01	1959/02/17	CO	MH	F	1	2	474
118340	2	200 MW	J1	H3A	1A4	8245894	1958/01/01	1959/06/30	CO	MH	F	1	2	474
118341	2	0 MW	J1	J3	1K4	8245895	1958/01/01	1959/06/30	CO	MH	F	1	2	474
MONAHE														
170X390	1	755 MW	J1	H13	4A4W	180X390	1969/01/01	1970/11/27	FO	MH	F	1	2	474
170X391	1	0 MW	J1	K2	7K6W	180X391	1969/01/01	1970/11/27	FO	MH	F	1	2	474
170X402	2	755 MW	J1	H13	4A4W	180X402	1970/01/01	1971/07/21	FO	MH	F	1	2	474
170X403	2	0 MW	J1	K2	7K6W	180X403	1970/01/01	1971/07/21	FO	MH	F	1	2	474
ORMOND BEACH														
170X415	1	750 MW	J1	G30	4C4W	180X415	1970/01/01	1971/08/03	CO	EH	F	1	2	474
170X437	2	750 MW	J1	G30	4C4W	180X437	1972/01/01	1973/03/05	CO	EH	F	1	2	474
REDONDO														
083616	4	60 MW	J1	C1	1A4	6750624	1949/01/01	1949/10/04	CO	MH	F	1	2	474
115015	6	156 MW	J1	F2	1B8	8090674	1956/01/01	1957/05/22	CO	MH	F	1	2	474
REDONDO														
080945	2	60 MW	J1	C1	1A4	5727960	1948/01/01	1948/04/03	CO	MH	F	1	2	474
090669	5	156 MW	J1	F2	1B8	6978224	1953/01/01	1954/09/23	CO	MH	F	1	2	474
SAN BERNARDIN														
115002	1	60 MW	J1	D1	1A4	8090661	1956/01/01	1957/05/07	CO	MH	F	1	2	474

TDS/ORS EQUIPMENT REPORT

06/16/93

REGION: FEWEST

TURBINE NO.	UNIT NO.	RATING	TECH CODE	EQUIP CODE	GEN CODE	GEN SERIAL #	SHIP DATE	COD DATE	FUEL CODE	CONT CODE	CYC CODE	MKT CODE	OPER STAT	OFF CODE
115048	2	60 MW	J1	D1	1A4	8245803	1957/01/01	1958/05/23	CO	MH	F	1	2	474R
TUCSON GAS & ELECTR														
IRVINGTON														
118359	2	75000 KW	J1	D1	1A4	8287013	1959/01/01	1960/01/05	CO	MH	F	1	2	433R
UTAH POWER & LIGHT														
GADSBY														
108801	3	100 MW	J1	D1	1A4	6943872	1954/01/01	1955/04/22	FO	MH	F	1	2	433R
HUNTER STATION														
170X768	3	412 MW	J1	D8	4J4W	180X768	1981/01/01	1983/03/02	NA	E2	F	1	2	433R
HUNTINGTON CAN														
170X534	0	411 MW	J1	D8	4A4	180X534	1973/05/18	1974/05/18				0	3	433R
170X638	1	411 MW	J1	D8	4A4W	180X638	1976/01/01	1977/03/28	FO	EH	F	1	2	433R
170X767	0	412 MW	J1	UNK		180X767						1	9	433R
270T100	2	411 MW	J1	D8	4A4W	280T100	1977/01/01	1977/06/06	FO	EH	F	1	2	433R
HAUGHTON														
128910	1	150 MW	J1	D5	1A4	8287062	1962/01/01	1963/04/01	FO	MH	F	1	2	433R
170X344	2	200 MW	J1	D5	4A4W	180X344	1968/01/01	1968/08/02	FO	MH	F	1	2	433R
HUNTINGTON PUBLIC PW														
FORD														
170X247	2	400 MW	J1	M2	7K4W	180X247	1964/01/01	1966/04/08	MU	MH	N	1	R	471V
170X248	1	400 MW	J1	M2	7K4W	180X248	1965/01/01	1966/06/12	MU	MH	N	1	R	471V





TDS/ORS EQUIPMENT REPORT

REGION: FEMEST	TURBINE NO.	UNIT NO.	RATING	TECH CODE	EQUIP CODE	GEN CODE	GEN SERIAL #	SHIP DATE	COD DATE	FUEL CODE	CONT CODE	CYC CODE	MKT CODE	OPER STAT	OFFICE
UNKNOWN	010025	0	1 MW	J2	UNKNOWN			1914/01/01	1914/01/01	FO	Z	F	9	2	433R
ROSEBURG LUMBER CO															
ROSEBURG	036706	0	6 MW	J2	UNKNOWN		4218980	1925/01/01	1925/01/01	FO	Z	F	2	2	474R
	072447	0	5 MW	J2	UNKNOWN		6638458	1947/01/01	1947/01/01	FO	Z	F	2	2	471V
	112509	0	6 MW	J2	DAC		4824154	1955/01/01	1955/01/01	FO	Z	F	2	2	471V
	173235	0	5 MW	J2	SXC			1965/01/01	1965/01/01	FO	Z	F	2	2	471V
	197654	0	14 MW	J2	SXC			1975/01/01	1975/01/01	FO	Z	F	2	2	471V
SALT RIVER PROJECT															
SANTIAN	197632	1	29 MW	J2	SCSF		161X728	1975/01/01	1974/08/01	FO	Z	F	1	2	471V
	197633	2	29 MW	J2	SCSF		161X729	1973/01/01	1974/12/01	NA	Z	F	1	2	433R
	197634	3	29 MW	J2	SCSF		161X730	1973/01/01	1973/01/01	NA	Z	F	1	2	433R
	197656	4	29 MW	J2	SCSF		161X778	1974/06/01	1975/04/01	NA	Z	F	1	2	433R
SAN DIEGO G&E CO.															
009680		0	5 MW	J2	UNKNOWN		636855	1916/01/01	1914/01/01	FO	Z	F	1	2	474R
CAL STA B 21		0	14 MW	J2	UNKNOWN		1783588	1922/01/01	1922/01/01	FO	Z	F	1	R	474R
022212		0	15 MW	J2	UNKNOWN			1926/01/01	1926/01/01	FO	Z	F	1	R	474R
031043		0	23 MW	J2	UNKNOWN		4097829	1927/01/01	1927/01/01	FO	Z	F	1	3	474R
032392		0	44 MW	J2	UNKNOWN		5268407	1937/01/01	1937/01/01	FO	Z	F	1	3	474R
045794		0	3 MW	J2	UNKNOWN		5542458	1940/01/01	1940/01/01	FO	Z	F	1	R	474R
SEATTLE CITY															
004137		0	8 MW	J2	UNKNOWN			1970/10/10	1970/10/10	FO	Z	F	1	R	474R
013401		0	10 MW	J2	UNKNOWN		1181396	1918/01/01	1918/01/01	FO	Z	F	1	R	474R



## TDS/ORS EQUIPMENT REPORT

06/14

REGION: FEWEST

TURBINE NO.	UNIT NO.	RATING	TECH CODE	EQUIP CODE	GEN CODE	GEN SERIAL #	SHIP DATE	COO DATE	FUEL CODE	CONT CODE	CYC CODE	MKT CODE	OPER STAT	OFFICIAL CODE
SIBLEY MUNICIPAL														
072521	0	3 MW	J2	UNKNOW		6638301	1946/01/01	1946/01/01	FO	Z	F	1	6	433
SIERRA PACIFIC POWER CALIFORNIA														
038939	0	4 MW	J2	UNKNOW		5226153	1930/01/01	1930/01/01	FO	Z	F	2	2	474
FT CHURCHILL														
173262	0	114 MW	J2	RHDF	1	8357248	1967/01/01	1967/01/01	NA		F	1	2	474
178765	2	114 MW	J2	RHDF	2	8383562	1971/01/01	1971/01/01	NA		F	1	2	474
NEV TRACY														
139846	0	44 MW	J2	SC	ST1	8328357	1962/01/01	1962/01/01	NA	Z	F	1	2	474
VALMY														
197833	0	277 MW	J2	RHDF	2	316X370	1982/01/01	1985/03/01	FO		F	1	2	474
SIMPLON														
POCATELLO 1														
197985	0	16 MW	J2	SAC		316X590	1985/10/01	1986/01/13	FO		F	2	2	433
SIMPSON PAPER HUMBOLDT, EUREKA, CA														
173296	0	25 MW	J2	DXC		8354610	1965/01/01	1965/01/01	FO		F	2	2	474
SIMPSON TIMBER SHELTON														
178296	0	0	J2	UNKNOW				1989/01/15				2	2	474
SINCLAIR REFINING SINCLAIR														
053648	0	1 MW	J2	UNKNOW		5434550	1942/01/01	1943/11/01	FO	Z	F	2	2	433

## TDS/ORS EQUIPMENT REPORT

06/16/9.

REGION: FEWEST

TURBINE NO.	UNIT NO.	RATING	TECH CODE	EQUIP CODE	GEN CODE	GEN SERIAL #	SHIP DATE	COO DATE	FUEL CODE	CONT CODE	CYC CODE	MKT CODE	OPER STAT	OFFICIAL CODE
SMURFET NEWS NEWBERG														
033173	0	12 MW	J2	UNKNOW		5202046	1937/01/01	1937/01/01	FO	Z	F	2	2	471V
087437	0	30 MW	J2	UNKNOW		6792043	1951/01/01	1951/07/01	FO		F	2	R	471V
OREGON														
033178	0	10 MW	J2	UNKNOW		5202028	1941/01/01	1941/01/01	FO	Z	F	2	R	471V
SOUTHERN CALIFORNIA CAL HIGHGROVE 1														
101668	0	44 MW	J2	UNKNOW		6943843	1954/01/01	1954/01/01	FO	Z	F	1	5	474R
SOLAR 1														
197845	0	14 MW	J2	SAC		316X368	1981/01/01	1982/04/01	FO		F	1	2	474R
SOWEST PUB SVC NEW MEXICO														
072208	0	8 MW	J2	UNKNOW		5840808	1946/01/01	1946/01/01	FO	Z	F	1	R	474C
SPRECKLES SUGAR CALIFORNIA														
039694	0	1 MW	J2	UNKNOW			1934/01/01	1934/01/01	FO	Z	F	2	5	474R
083492	0	1 MW	J2	UNKNOW		6880187	1949/01/01	1949/01/01	FO	Z	F	2	2	474R
164062	0	5 MW	J2	SAC		5354600	1964/01/01	1964/01/01	FO		F	2	2	474R
STAUFFER CHEMICAL NEVADA														
083180	0	5 MW	J2	UNKNOW		6638402	1949/01/01	1949/01/01	FO	Z	F	2	2	474R
178581	0	12 MW	J2	SAC		8357340	1967/01/01	1967/01/01	FO		F	2	R	474R
STONE CONTAINER CORP SNOWFLAKE, AZ														
178844	0	45 MW	J2	SAC		161X373	1974/01/01	1974/01/01	FO		F	2	2	433R

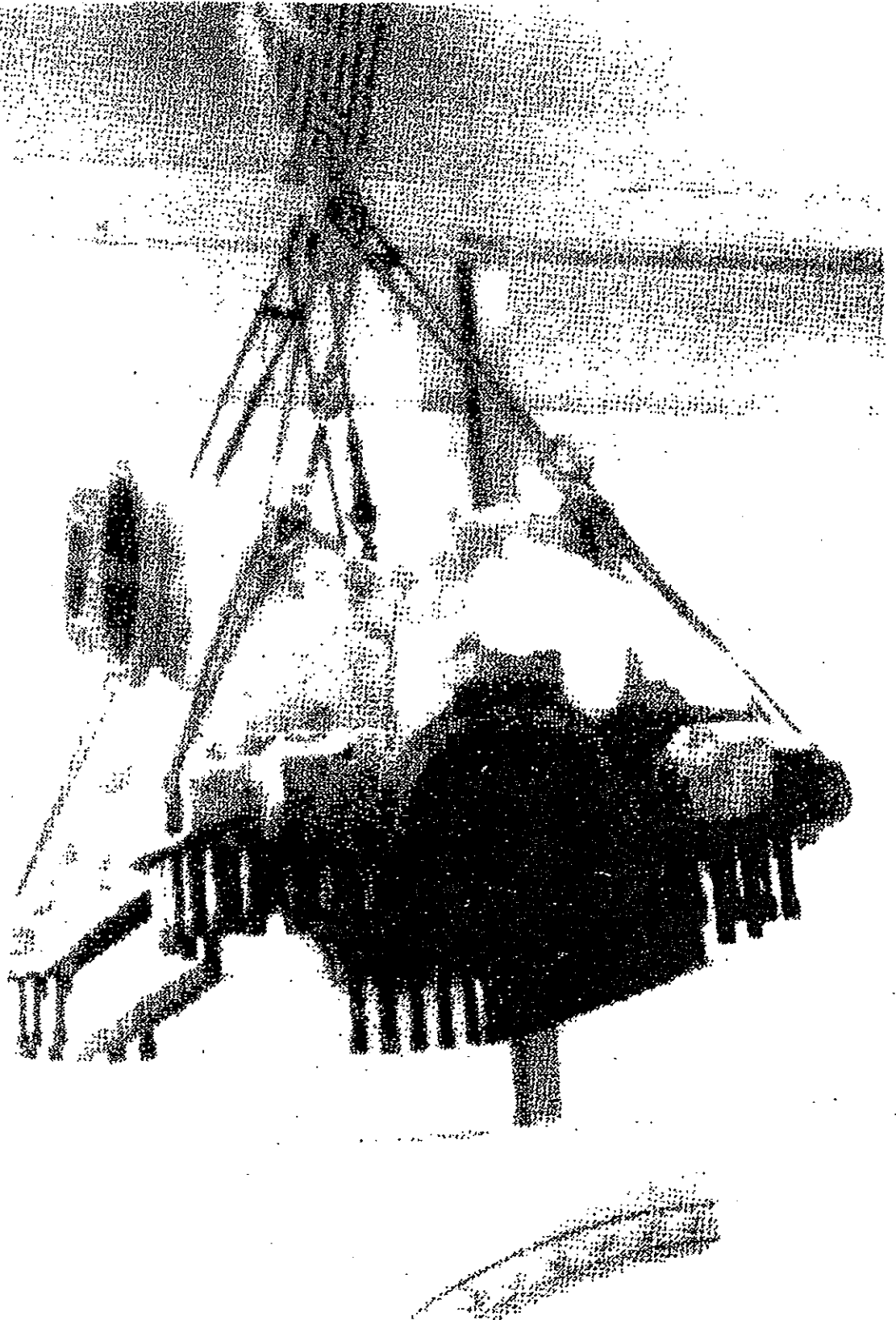


Fig. 4. Lifting upper H.P. shell with horizontal joint studs

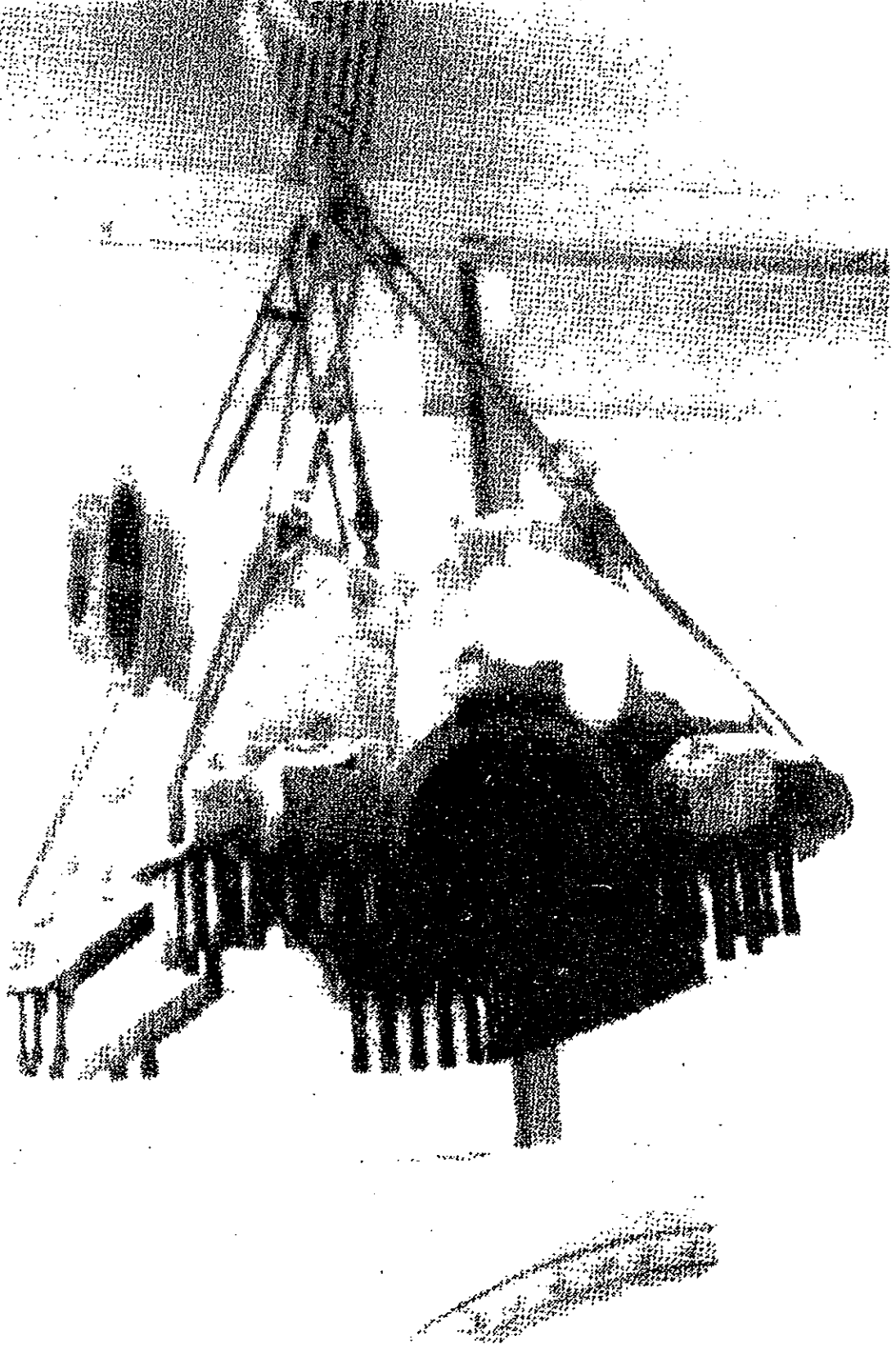


Fig. 4. Lifting upper H.P. shell with horizontal joint studs

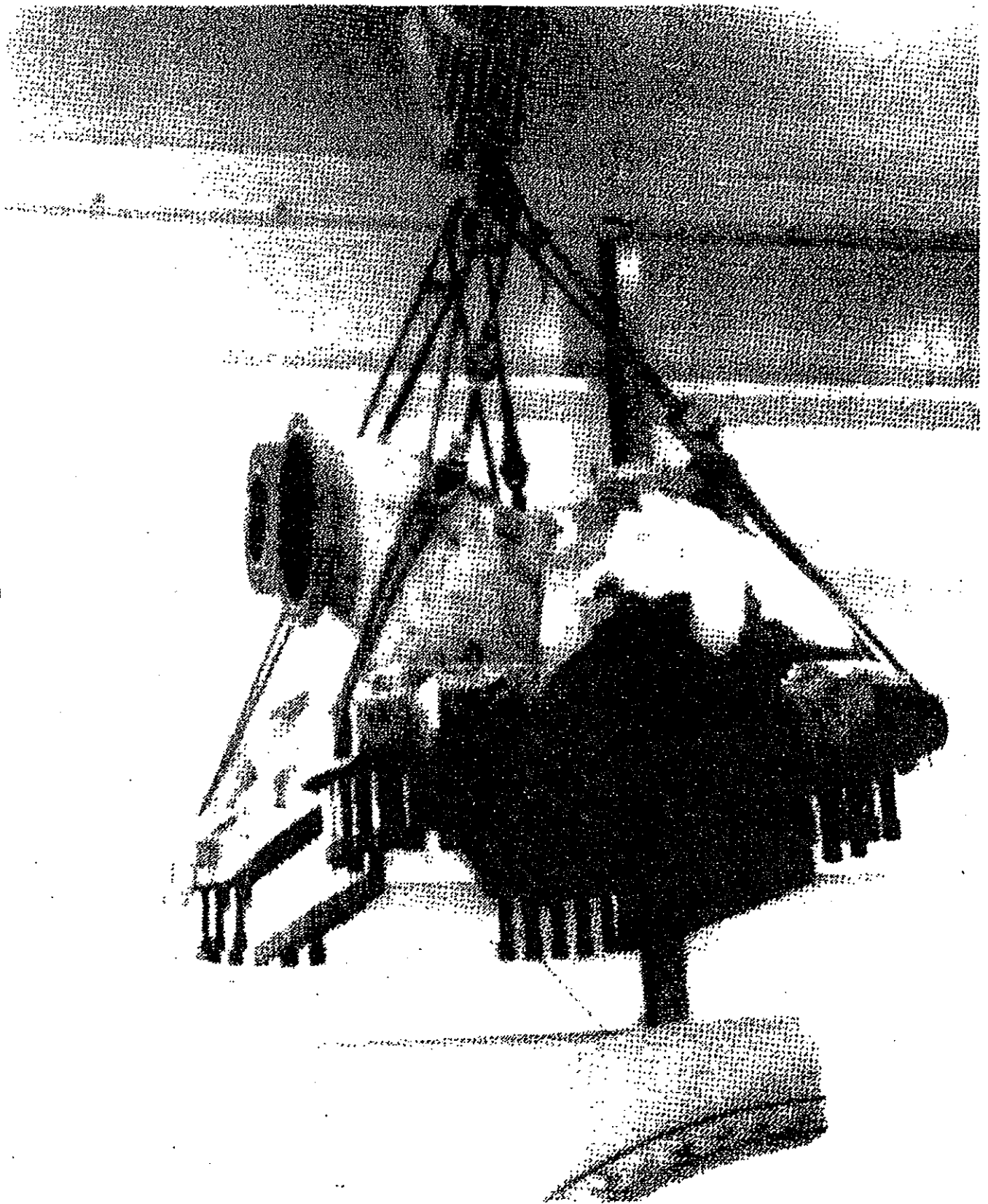


Fig. 4. Lifting upper H.P. shell with horizontal joint studs